

## Recent internationals

Here are some of the more recent international Rugby Union matches from St. Luke's and Loughborough:

St. Luke's	Loughborough
M. DAVIS	R. BRIDGES
G. CHRISTIE	L. BATTISTONE
D. HARRIS	C. EVANS
G. HODGSON	N. GAVIN
G. JOHN	D. HAYWARD
K. MADDOCKS	R. HODGE
C. MAIN	R. JONES
R. MEREDITH	J. MANTLE
R. PRICE	C. TAYLOR
D. RUTHERFORD	J. PALLANE
B. SPARKS	A. POSE
A. UNDERWOOD	R. KIDMAN
J. UZZELL	J. SCOTTS
W. WATKINS	D. ROLLIT
G. WELLS	R. POWELL
R. WILLIAMS	K. SAVAGE
R. EDWARDS	J. TAYLOR
D. DEVERAUX	R. WEST
C. NOKKIS	K. FLEDDING
R. JONES	D. PROUT
R. O'NEA	J. DAWES
J. YOUNG	T. G. E. DAVIES
L. WRIGHT	R. COWMAN
	R. COTTON
	L. DICK
	S. SMITH
	P. GRAY

Today's Referee: Mr. R. F. Johnson (England)

The referee today needs no introduction to rugby followers. Mr. Johnson has taken charge of almost every big game at some time or another. I would like to also give a sincere vote of thanks to Mr. Gwynne Williams, who has acted as a referee. Mr. Johnson could not make today's game, so that Mr. Johnson will be today's guest as much as the players and spectators.



**STOOP MEMORIAL GROUND  
TWICKENHAM**

**LOUGHBOROUGH COLLEGES**

versus

**ST. LUKE'S COLLEGE, EXETER**

**SATURDAY  
17th FEBRUARY, 1973**

**KICK-OFF 11.15 a.m.**



**OFFICIAL PROGRAMME 10p**



Welcome to the Stoop Memorial Ground for this the fifteenth encounter between Loughborough Colleges and St. Luke's College, Exeter. St. Luke's are leading the series by nine matches to five.

The club would like to extend a warm welcome to their guests today. We feel deeply indebted to Harlequins Rugby Football Club for the use of their ground; and especially to Wing Commander J. Seldon, I. Llewellyn-Jones, Bruce Chapman and Steve Thomas for all the help they have given us.

The preparation of a programme such as this is never an easy task and a special vote of thanks must go to L. D. Gardiner and M. Rafter for their help in providing us with the vital information for St. Luke's. Apologies also to any player whose last minute efforts earned them a place in their College team, and then found they 'were not spotlighted' in this programme.

Finally, we hope you all enjoy a first-class exhibition of open, running rugby. To all college students it will undoubtedly be one of the most tense and exciting games they will ever experience. Thank you all for your support.

D. WALBEOFF (Bedwellty G.S.),

P. WAINE (Glasgow Academy),

Match Organisers

Results of previous matches (Loughborough score first):

22.1.59	3—12	Lost
24.2.60	3—17	Lost
22.2.61	8—9	Lost
14.2.62	11—3	Won
20.2.63	17—13	Won
19.2.64	6—8	Lost
24.2.65	16—6	Won
23.2.66	3—13	Lost
22.2.67	3—9	Lost
21.2.68	9—12	Lost
15.2.69	6—14	Lost
21.2.70	9—11	Lost
20.2.71	24—3	Won
19.2.72	10—9	Won



## Loughborough Play St. Luke's

by W. S. Dannelly, President, Loughborough Colleges Rugby Club

This meeting of Loughborough and St. Luke's is a culmination of all that is good in college football. The game between the Colleges has become a tradition, demonstrating all that is good in rugby football. We have thirty young men who have worked, trained, and worried themselves to a pitch to produce football that will excite and entertain us today. No quarter will be given, or asked, but I trust this will always be within the laws of the game.

The faster and more open play the greater the enjoyment of all concerned, and the less risk of serious injury. This was noted in the match between the Barbarians and the All Blacks. So, regardless of the outcome, I believe the game today will be a victory for rugby football.

The players I envy for their privilege of playing. The coaches I admire for their skill and hard work and the nerve

racking months of preparation. The parents of the players I thank for their support, and I acknowledge the pride they must feel in their sons. To those not playing today; the supporting fifteens I send my best wishes for their future rugby careers. Of all the students at the Colleges unfortunately only fifteen can play today.

Our thanks are also due to three people without whose services the match could not take place; the referee and the touch judges, hoping that the players will respect their unquestioning authority.

To the Harlequin Rugby Football Club Committee and members, I offer our gratitude for allowing us to use their venue for this most important date in our rugby year. May today's game be worthy of the man who gives his name to the ground. I wish both teams well. I hope the best team wins; I look forward to a great game (with a little bias).

## Officials For 1972/73

### LOUGHBOROUGH COLLEGES OFFICIALS 1972/73

President	: W. S. DONNELLY
Chairman	: J. T. GREENWOOD
Hon. Secretary	: P. G. M. WAINE
Hon. Treasurer	: J. CHOLEWA
Hon. Fixture Secretary	: I. THOMAS
Hon. Social Secretary	: W. RALEIGH
Hon. Publicity Secretary	: D. WALBEOFF
Hon. Assistant Secretaries	: D. APPLETON, C. ASHTON, P. FARROW J. HAYES, K. HIGH, C. HOPKINSON R. JENNER, C. JONES, P. McCLUSKEY R. McKEAN, R. STOKES, C. SWAN

—★—

### ST. LUKE'S COLLEGE OFFICIALS 1972/73

President	: THE RT. REVD. THE BISHOP OF EXETER
Tutor in Charge Fixtures	: MR. A. T. HODGSON
Captain	: A. JONES
Vice-Captain	: M. RAFTER
Secretary	: L. D. GARDINER
Assistant Secretaries	: M. REDDING, P. MATHEWS
Treasurer	: T. WELSH
Assistant Treasurer	: J. FISHER





STEVE MIDGELOW

## Loughborough Colleges Squad

STEVE MIDGELOW (*King's School, Macclesfield*)

Full Back. Age 22. Height 5ft. 10in. Weight 12st.

Has had a fine season for the first team. A utility back who shines at full back and is very cool under pressure. A county player for Cheshire. A fourth year P.E. and Geography student. Home club, Wilmslow.

PETE MELIA (*St. Edward's, Liverpool*)

Full Back. Age 21. Height 6ft. Weight 12st. 2lb.

Pete has matured into a fine player this season, scoring over 100 points in less than a dozen games. A schoolboy cap for Lancashire and last season's Freshers' captain. A second year P.E. and Geography student. Home club, Birkenhead.



PETE MELIA

CLIVE REES (*Llanelli G.S.*)

Wing. Age 21. Height 5ft. 9in. Weight 11st. 6lb.

Clive makes his third appearance against Luke's today. Has been a regular first team player for three seasons. His terrific speed has at last earned him a county cap for Leicestershire. A second year P.E. and Divinity student. Home club, Llanelli.

COLIN LAMBERT (*Normanton G.S.*)

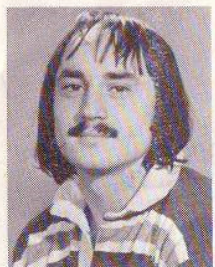
Wing. Age 19. Height 5ft. 10in. Weight 12st. 13lb.

An England schoolboy cap who has stepped straight into the first team squad. He has produced many top-class performances with his strong and aggressive running. A first year P.E. and Geography student. Home club, Wakefield.

LOUIS DICK (*Morrison's Academy, Crief*)

Wing. Age 21. Height 5ft. 10in. Weight 13st. 3lb.

Louis made his international debut for Scotland against Wales last season. This will be his fourth Luke's match. He has not played regularly this season due to work load but will be out to win today. A fourth year P.E. and History student.



CLIVE REES



COLIN LAMBERT



LOUIS DICK



GLEN WAUGH



GRAHAM BARLOW



STEVE RULE

GLEN WAUGH (*Devonport H.S.*)

Centre and Captain. Age 21. Height 5ft. 10in. Weight 13st 1lb.

Glen has done a fine job this season as captain. He is a strong running centre, whose stability has a great settling effect over the back division. A county cap for Devon and toured with A. Mort last season. A third year P.E. and History student. Home club, Plymouth Albion.

GRAHAM BARLOW (*Faling G.S.*)

Centre. Age 22. Height 5ft. 10in. Weight 12st. 10lb.

Has been injured for the greater part of the season but is recognised as being the spearhead of the Loughborough attack. A determined player. A county player for Leicestershire. A third year P.E. student. Home club, Rosslyn Park.

STEVE RULE (*Wirral G.S.*)

Outside Half. Age 21. Height 5ft. 7in. Weight 11st. 9lb.

A last-minute replacement for last year's game who has established himself in the first team this season. A fast player who lives to run with the ball and has the ability to exploit any weakness in a defence. A third year P.E. and History student. Home club, Birkenhead.

ALAN PERCIVAL (*Windsor G.S.*)

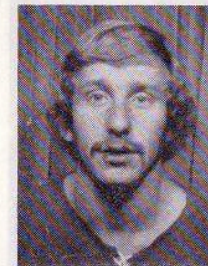
Outside Half/Centre. Age 21. Height 5ft. 8in. Weight 12st. 3lb.

A stable player who is renowned for his direct running. Alan has been a regular first team player for two seasons. An England schoolboy cap and a county player for Leicestershire. A third year P.E. and Divinity student. Home club, Rosslyn Park.

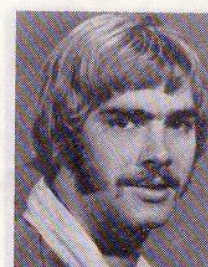
DAVE HILL (*Milfield*)

Scrum Half. Age 21. Height 5ft. 8in. Weight 12st. 1lb.

Dave was injured at the beginning of the season but fought his way back to fitness to dominate the scrum half spot. An England schoolboy cap and county cap. A second year P.E. and Drama student. Home club, Rosslyn Park.

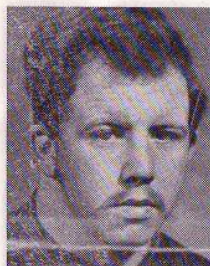


ALAN PERCIVAL

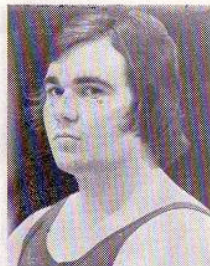


DAVE HILL





JOHN CROASDELL



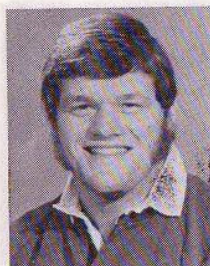
HYLTON ROBERTS



IESTYN THOMAS

**JOHN CROASDELL (Durham School)**

Prop. Age 21. Height 5ft. 10in. Weight 15st. 2lb.  
Played in a final England schoolboy trial and has since gained full county honours and England Under-23 squad member. A strong prop who seems to get totally involved in all the game. A brilliant loose forward. A second year P.E. student. Home club, Rochdale.



FRANK COTTON

**HYLTON ROBERTS (Rowthorpe School)**

Prop. Age 20. Height 5ft. 11in. Weight 14st. 13lb.  
A tough determined player who lets nothing get in his way. An excellent deputy to Frank Cotton, who has made a very successful transfer from Freshmen to first team rugby. A keen social member. A second year P.E. and History student.

**IESTYN THOMAS (Llandoverly College).**

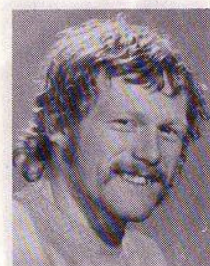
Hooker. Age 21. Height 5ft. 11in. Weight 13st. 8lb.  
Took over the hooking position from John Grey when he came to college and has developed into a fine player. He has a very fast strike and gives 100 per cent. every game. A second year P.E. and Drama student. Home club, Swansea.

**FRANK COTTON (Newton-le-Willows G.S.)**

Prop. Age 23. Height 6ft. 2in. Weight 16st. 8lb.  
An England cap who has toured Japan and South Africa. A member of the North-West Counties team who beat the All Blacks. A man with all the attributes of a top-class player. A third year P.E. and Maths student. Home club, Liverpool.

**ASHLEY ARMSTRONG (Methodist College, Belfast)**

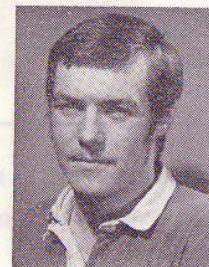
Scrum Half. Age 20. Height 5ft. 7in. Weight 11st. 11lb.  
"Ernie" stepped into the first team at the beginning of the season before playing Freshman rugby. He will be a strong contender for today's contested scrum half place. An Ulster Under-23's cap. A first year P.E. and Geography student. Home club, Collegians.



ASHLEY ARMSTRONG

**CHARLIE SWAN (Merchiston Castle School, Edinburgh)**

Scrum Half. Age 20. Height 5ft. 9in. Weight 11st. 12lb.  
Another player who has come good after his season with the Freshers. A brave and resourceful scrum half. A second year P.E. and Social Studies student.



JOHN KERR



JOHN HUDSON



STEVE GODFREY

**JOHN KERR (Coleraine Academical Institution)**

2nd Row. Age 21. Height 6ft. 4in. Weight 15st. 7lb.  
John has been an ever-present in the first team for the past three seasons. The gentle giant off the field who is a real driving force on the park. He has represented the English Universities. A third year P.E. and Physical Science student. Home club, Ballymena.

**JOHN HUDSON (Uppingham School)**

2nd Row. Age 21. Height 6ft. 8in. Weight 16st. 2lb.  
A giant with tremendous line-out ability. An England schoolboy cap, Staffs. county cap and in the England Under-23 squad. He will be a great asset to the club over the next few seasons. A first year P.E. and Physical Science student. Home club, Moseley.

**STEVE GODFREY (Windsor G.S.)**

Flanker. Age 21. Height 6ft. 1in. Weight 12st. 7lb.  
A player who can be relied on to give his best, especially on the big occasion. A brilliant player in the loose who never stops running. A Berkshire county cap. A third year P.E. student. Home club, Rosslyn Park.

**CHRIS ALDOUS (Ipswich H.S.)**

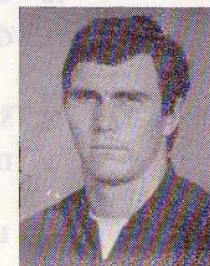
Flanker. Age 21. Height 6ft. Weight 13st. 8lb.  
Chris has worked and played hard to achieve a place in the first team this season. A hard-working player who can also play at No. 8. Always supporting his team-mates. A third year P.E. and Maths student. Home club, Ipswich.

**DICK DICKSON (Belfast H.S.)**

Flanker. Age 21. Height 5ft. 11in. Weight 12st. 2lb.  
A third Irishman in the squad who has matured immensely since his Freshman experience last season. An extremely strong tackler who tackles anything that moves. A second year P.E. and Drama student. Home Club, Malone.

**GARTH THOMAS (Llanelli G.S.)**

No. 8. Age 22. Height 6ft. 1in. Weight 14st. 3lb.  
A second year student who gained vital experience with Liverpool before he came to college. He has now settled into the No. 8 spot, who wins more than his share of balls at the back of the line. A second year P.E. and Maths student. Home club, Llanelli.



CHRIS ALDOUS



DICK DICKSON



GARTH THOMAS



## Loughborough Colleges

(Maroon and White Shirts and Socks, Black Shorts)

## St. Luke's College

(Dark and Light Blue Shirts and Socks. Dark Blue Shorts)

15	S. MIDGELOW	*	FULL BACK	15	P. GUNTER	
14	L. DICK	*†	RIGHT WING	14	A. MORT	*
13	G. WAUGH (Capt)	*	CENTRE	13	A. FRIELL	*
12	G. BARLOW	*	CENTRE	12	D. BURCHER	*
11	C. REES	*	LEFT WING	11	M. SLEMEN	*
10	S. RULE	*	OUTSIDE HALF	10	N. BENNETT	*
9	D. HILL	*	SCRUM HALF	9	T. MILLS	
1	F. COTTON	*†	LOOSE HEAD PROP	1	I. READ	
2	I. THOMAS		HOOVER	2	I. ALDRIDGE	*
3	J. CROASDELL		TIGHT HEAD PROP	3	H. DICKS	
4	J. KERR	*	2nd ROW	4	G. WARNE	
5	J. HUDSON	*	2nd ROW	5	G. LINK	*
6	R. PIGOIT	*	FLANKER	6	M. RAFTER	*
8	G. THOMAS		No. 8	8	J. SQUIRE	*
7	S. GODFREY	*	FLANKER	7	A. JONES (Capt)	

Reserves:

A. PERCIVAL  
H. ROBERTS  
C. ALDOUS

Referee:

Mr. R. H. Johnson  
(England)

\* County Players

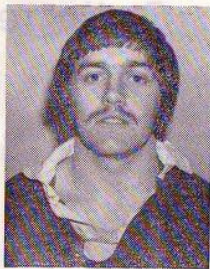
† Internationals

Reserves:

S. MASSIE  
R. NEEDHAM  
N. BROWN



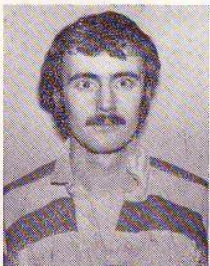
## St. Luke's College Squad



ALAN MORT

ALAN MORT (*Duffryn School, Newport*)

Full Back/Wing. Age 22. Height 5ft. 8in. Weight 12st. 8lb.  
Alan has been selected twice for this important game but has been injured both times. Represented Devon in the county championship and toured with a combined Devon/Cornwall team last year. A third year P.E. student. Home club, Newport.



PETER GUNTER

PETER GUNTER (*St. Bredeeen's College, Bristol*)

Full Back. Age 23. Height 6ft. 1in. Weight 12st. 6lb.  
Peter has played consistently all season and hopes to make the team today. He has worked his way up from the Extras to establish himself in the first team this season. A third year P.E. student.

RALPH WARMINGTON (*Nicholas Chamberlaine Comp.*)

Wing. Age 24. Height 6ft. Weight 13st.  
Ralph has been plagued by injury, but this season has come through to make a fine wing, winning himself a place in the South-West Counties team against the All Blacks. A fourth year P.E. student. Home club, Coventry.

MIKE SLEMEN (*St. Edward's College, Liverpool*)

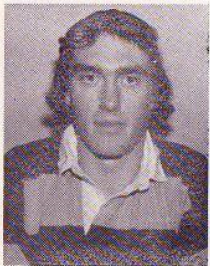
Left Wing. Age 21. Height 6ft. 1in. Weight 11st. 12lb.  
A regular first team player hoping to play his second 'Loughborough' match today. His elusive running has gained him county recognition by Devon. A second year P.E. student. Home club, Liverpool.

ALAN FRIELL (*Ashford County G.S.*)

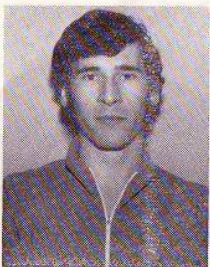
Centre. Age 22. Height 6ft. 2½in. Weight 14st. 7lb.  
Alan has already played three Loughborough matches. Last season's captain, who is playing better this season without the burden of the captaincy. Has played for Middlesex. A fourth year P.E. student. Home club, London Scottish.

DAVE SCOTT (*Strathallan School*)

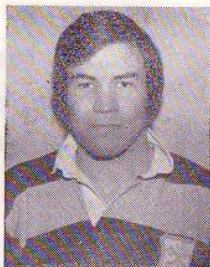
Centre. Age 25. Height 5ft. 9in. Weight 12st.  
Another strong experienced player with three full seasons in the first team behind him. A determined and dedicated player who has worked hard for a place today. A fourth year P.E. student. Home club, Montrose and District.



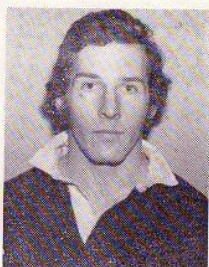
RALPH WARRINGTON



MIKE SLEMEN



ALAN FREILL



DAVE SCOTT



DAVID BURCHER

DAVID BURCHER (*Newport High School*)

Centre. Age 22. Height 5ft. 10in. Weight 13st. 6lb.  
A first year student who has played regularly for the first team. He has combined well with Alan Friell to produce some strong running. An ex-Welsh Secondary Schools captain. A first year Chemistry student. Home club, Newport.

NEIL BROWN (*Barry Comp.*)

Centre. Age 20. Height 5ft. 8in. Weight 12st.  
Neil has played for both the Extras and first teams this season, but he is a determined performer who plays with all the heart and fire of his native land. A second year P.E. student. Home club, Glamorgan Wanderers.

JOHN POWTIE (*Bedford School*)

Outside Half. Age 25. Height 5ft. 7in. Weight 12st.  
Has come to top form this season and is renowned for his speed. A well balanced and intelligent little player. A second year History student.

NEIL BENNETT (*Tiffin Boys' School*)

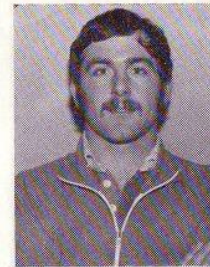
Outside Half. Age 21. Height 5ft. 10½in. Weight 12st. 7lb.  
Neil has played for Devon, S.W. Counties and was a member of the England Under-23's squad. He is determined to avenge last year's defeat and in doing so push for full international recognition. A third year P.E. student.

TERRY MILLS (*Hemsworth G.S., Yorkshire*)

Age 23. Height 5ft. 10in. Weight 12st. 4lb.  
Played at fly half two years ago, but has now been converted to scrum half. A natural ball player with immense ability and a very long pass. Yorkshire Schools cap. A fourth year P.E. student. Home club, Morley.

ALEX REID (*Gaverton G.S.*)

Scrum Half. Age 22. Height 5ft. 11in. Weight 12st. 8lb.  
Was a regular first team member last season, but is now being kept out of a first team place by Terry Mills. Originally a footballer. A third year Geography student. Home club, Loughor.



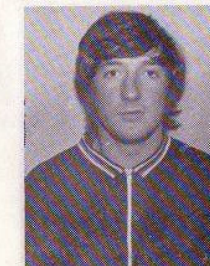
NEIL BROWN



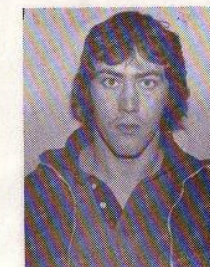
JOHN POWTIE



NEIL BENNETT



TERRY MILLS

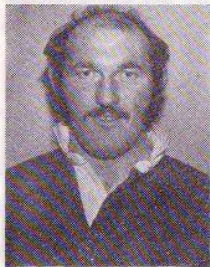


ALEX REID

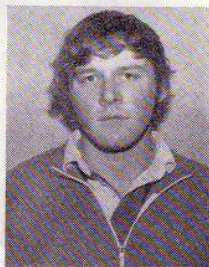




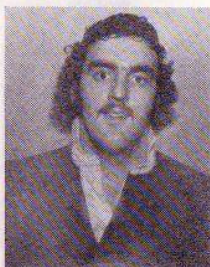
IAN READ



RAY NEEDHAM



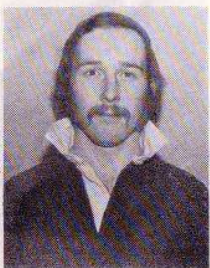
JEFF WARNE



HARRY DICKS



IAN ALDRIDGE



TONY KLASKA

IAN READ (*St. Edward's College, Liverpool*)

Prop. Age 22. Height 6ft. Weight 14st.

Has played regularly for the first team for two years, but has improved his game this season by dedication and hard work. Has played for English Public Schools. A second year P.E. student. Home club, Liverpool.

HARRY DICKS (*Northern G.S., Portsmouth*)

Prop. Age 20. Height 6ft. 4in. Weight 15st. 9lb.

Has made a remarkable change, stepping into the first team from Freshman rugby last season. A very young prop, who is extremely keen to learn. A second year P.E. student. Home club, Portsmouth.

IAN ALDRIDGE (*Welwyn H.S.*)

Hooker. Age 24. Height 5ft. 8in. Weight 13st. 7lb.

Played for the Extras all last season, but has played extremely well for the first team on several occasions this season. A player who gives his all and more in a match. A fourth year Economics student. Home club, Welwyn.

TONY KLASKA (*St. Brandon's College*)

Hooker. Age 21. Height 5ft. 8in. Weight 12st. 6lb.

Another small player with great ability in the tight and loose. He possesses a very quick strike and great heart for such a small man. A second year P.E. student. Home club, Bristol.

RAY NEEDHAM (*Bingley G.S.*)

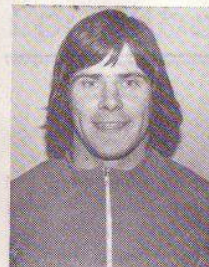
Prop. Age 23. Height 5ft. 10in. Weight 15st. 8lb.

A strong support player for the first team and an active member of the social side of the club. Won an England Schools cap before entering college. A fourth year P.E. student. Home club, Bingley.

GEOFFREY WARNE (*Skinner's School*)

Lock. Age 20. Height 6ft. 2in. Weight 14st. 6lb.

The gentle giant off the field who has matured into a strong determined player this season. A powerful and hard-working player with one Loughborough game behind him. A third year P.E. student. Home club, Tonbridge Wells.



GEOFF LINK



SIMON MASSIE



ALAN JONES

GEOFFREY LINK (*Maidstone G.S.*)

Lock. Age 21. Height 6ft. 2in. Weight 15st.

Missed last year's game due to injury, but has moved up to lock this season and given some fine free running performances. A county player for Kent and an England Under-23's squad member. A third year P.E. student. Home club, Maidstone.

SIMON MASSIE (*Caerphilly G.S.*)

Lock. Age 22. Height 6ft. 2in. Weight 14st. 7lb.

Another Extras player who has worked hard to contend for a place today. A keen social member of his club. Reached the Welsh Secondary Schools final trial. A third year P.E. student. Home club, Bedwas.

ALAN JONES (*Hemsworth G.S., Yorkshire*)

Flanker. Age 23. Height 5ft. 10in. Weight 13st. 3lb.

A dedicated player with two Loughborough matches behind him. Very fit and fast around the field and sets a fine example to the rest of his team. A first-class tackler. A fourth year P.E. student.

MICHAEL RAFTER (*St. Brendon's College, Bristol*)

Flanker. Age 20. Height 5ft. 10in. Weight 13st. 4lb.

Vice-captain and a most determined and aggressive player. A regular first team player, with England Under-19 and Devon caps to his credit. He will be keen for a win today. A second year P.E. student. Home club, Bristol.

PETER FORD (*St. Brendon's College, Bristol*)

Flanker. Age 22. Height 6ft. 1in. Weight 14st. 5lb.

Has been close to winning a first team place every season and this year captains a very successful Extras side. An England Under-19 cap. Has tremendous enthusiasm. A third year P.E. student. Home club, Bristol.

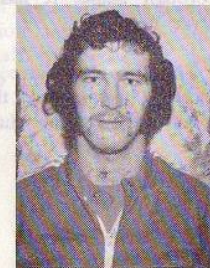
JEFFREY SQUIRE (*Newbridge G.S.*)

No. 8. Age 21. Height 6ft. 2in. Weight 14st. 7lb.

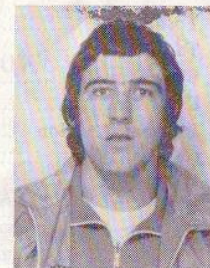
Has been a regular in first team since entering college. A county player for Devon and yet another Welsh exile in the St. Luke's squad. Played against Loughborough last year. A second year P.E. student. Home club, Newbridge.



MIKE RAFTER



PETER FORD



JEFF SQUIRE



## St. Luke's season so far

The beginning of the season was marred only by the fact that Alan Jones, the College captain, reported for pre-season training with a badly injured hip. Alan trained and coached the side to four good wins early on, to set the standard for the season. However, the pressures of four games in two weeks took their toll, leaving the captain with further injury problems. On top of this County calls robbed us on occasions of a number of our more experienced players. Ironically this benefited the club, realizing we had strength in depth. The players who stood in, as it were, performed admirably. The competition for first team places has been unusually hot and this term, so close to the Loughborough game, it has reached almost fever pitch.

The first XV have pulled off some excellent performances this season against some of the stronger clubs in the country,

notably Bristol and Northampton, and although narrowly losing both, brought credit to themselves and the College. Surprising results have come in the form of Cheltenham and Barnstaple. The College lost both of these games to weaker opposition due to a lack of urgency in the team's play. I am happy to report, however, that the self-confidence and determination is once again becoming apparent in the Luke's style of play, as was admirably displayed in the winter term against Esher and Barnstaple.

Finally, we are indebted to Martin Underwood for the time he has given up for the team, both advising and coaching. Some very rewarding sessions have resulted, all with an aim to reverse last season's result. The College looks forward to this morning's encounter and a display of good, open rugby.

### Results:

Torquay	28-12	W	Oxford Univ. Grey	14-6	W
Taunton	35-7	W	Bath	16-25	L
Bridgewater	12-6	W	Exeter	9-6	W
Esher	41-0	W	Clifton	25-9	W
Plymouth Albion	17-21	L	Northampton	22-30	L
Cheltenham	13-15	L	Barnstaple	7-10	L
Barnstaple	49-3	W	Maesteg	6-8	L
Bristol	7-16	L	Torquay	39-0	W
P	W	D	L	For	Against
16	9	0	7	340	174

## Loughborough season so far

The first XV got off to an excellent start with a win against the Leicestershire county side and then narrowly lost to Moseley, surely one of the strongest club sides in England, finishing the game with only thirteen players.

As usual injuries and County calls took a heavy toll on our first team squad and consequently lost the next three games. However, due to our depth of talent the team recovered to produce some sound performances.

At the time of writing the team has gained a place in the semi-final of the U.A.U. championship with some high scores totalling 258 points in five games, culminating in a 55-6 win against Bangor University in the quarter finals.

During the season the first XV has been forced to call upon the services of

over forty players, and it is a comforting thought that all of them have the ability to be included in today's side. It is a pity that only fifteen can have the privilege of playing today.

We approach this match with seven consecutive wins behind us and, having overcome injury difficulties, seem to have hit peak form at the right time. The St. Luke's game is only the start of an extremely hard end to the season, which includes matches against Gloucester, Rosslyn Park, Broughton Park and Leicester Tigers.

The club is deeply indebted to John Smith, Rod Thorpe and Rex Hazeldene, who have coached the supporting teams. A special mention must go to Jim Greenwood for all the work he has done for the club and the first XV.

### Results:

Leicestershire	28-0	W	Nottm. Univ. (U.A.U.)	32-0	W
Wakefield	37-0	W	Guys Hospital	26-9	W
Moseley	16-21	L	Fylde	10-20	L
Met. Police	4-34	L	Leicester Univ. (U.A.U.)	21-9	W
Staffordshire	6-12	L	Old Whitgiftians	16-0	W
New Brighton	6-16	L	Harrogate	22-3	W
Aston Univ. (U.A.U.)	75-9	W	Cheltenham	44-0	W
Headingley	20-24	L	Oxford	52-11	W
Warwick Univ. (U.A.U.)	75-0	W	Bangor Univ. (U.A.U.)	55-6	W
St. Mary's Hospital	23-3	W	Streatham/Croydon	21-0	W
P	W	D	L	For	Against
20	14	0	6	549	177



## Recent Internationals

---

Here are some of the more recent International Rugby Union caps from St. Luke's and Loughborough:

### St. Luke's

M. DAVIS  
G. GRIFFITHS  
D. HARRIS  
G. HODGSON  
G. JOHN  
K. MADDOCKS  
D. MAIN  
B. MEREDITH  
B. PRICE  
D. RUTHERFORD  
B. SPARKS  
A. UNDERWOOD  
J. UZZELL  
W. WATKINS  
G. WELLS  
R. WILLIAMS  
H. EDWARDS  
D. DEVERAUX  
C. NORRIS  
R. JONES  
J. O'SHEA  
J. YOUNG  
I. WRIGHT

### Loughborough

T. BROPHY  
J. BUTTERFIELD  
E. EVANS  
M. GAVINS  
D. HAYWARD  
R. HOSEN  
K. JONES  
J. MANTLE  
C. MACFADYEAN  
J. PALLANT  
A. PASK  
B. RISMAN  
J. ROBINS  
D. ROLLIT  
B. POWELL  
K. SAVAGE  
J. TAYLOR  
B. WEST  
K. FIELDING  
D. PROUT  
J. DAWES  
T. G. R. DAVIES  
R. COWMAN  
F. COTTON  
L. DICK  
S. SMITH  
J. GRAY

**Today's Referee:** Mr. R. F. Johnson (England)

Our referee today needs no introduction to rugby followers. Mr. Johnson has taken charge of almost every big game at some time or another. I would like to also give a sincere vote of thanks to Mr. Gwynne Walters, who has stood by in case Mr. Johnson could not make today's game. We trust that Mr. Johnson will enjoy today's game as much as the players and spectators.