

**SAINT
LUKE'S
COLLEGE**

**STUDENTS'
UNION
HANDBOOK
1970-71**



Roseland Investment Co. Ltd.

**29 SOUTHERNHAY EAST
EXETER, EX1 1NW**

*Suppliers, Operators and Service
Engineers of Amusement
Equipment*

*Juke Boxes, Football Tables,
Fruit Machines, Pin Tables. Bar
Billiards, Arcade Equipment*

All Enquiries Welcomed

Speedy and Personal Service at all Times

Phone Exeter 78040

Day and Night Answering Service

KENJO WASHETERIAS

SIDWELL STREET

139 - Open 24 Hours

48 - Open 8 a.m. - 10p.m.

BUMPER JET WASH

10 New Pence

DRY CLEANING

Open 8.45 a.m. - 6 p.m. Monday - Saturday
and

7 p.m. - 9.30 p.m. Monday - Friday



ST. LUKE'S 1970-71

INTRODUCTION

The cost of this handbook has been borne by the advertisers. Please support them whenever possible. Michael Brown began the arduous task of finding these advertisers back in January. His efficiency and industry has enabled the Union to produce this booklet free of charge.

The material for the handbook has been collected, written and presented by Derek Wyatt, to whom criticism should be addressed.

students' handbook

contents

From The Principal	4
From The President	5
Resident Students	7-11
Map of Hostels	8
The Administration of St. Luke's	12-15
Audio-Visual Organisation	16-17
The Library	18-19
The Student Union 1969-70	20
Chapel	23
Students Representative Council	24-33
Financing the Students' Union	34
Clubs and Societies	35-49
General Information	50-60

FROM THE PRINCIPAL

I give a cordial welcome to students entering the College in September 1970.

Until a few years ago I could have described the College accurately and predicted a process of steady development. The wind of change that has reached gale force in many universities and colleges is also blowing at Saint Luke's. There have been some rather petulant gusts but the prevailing breeze is healthy and invigorating.

Last year after some misunderstandings the human pattern of the College revealed itself clearly. Students and academic, administrative, medical and domestic staffs were seen to have their special duties and rights; and the need for mutual understanding, courtesy and consideration was appreciated. The College cannot function without students and academic staff; nor can it function without groundsmen and kitchen staff. The College does not belong to any of its components. It belongs to the children whom the students are being prepared to teach.

A symptom of the process of change is the revision of the Scheme

of Government to include student representatives on the Governing Body and the Academic Board. Students have now an opportunity of expressing their point of view openly and officially and of taking a part in making decisions and formulating policy. If any students have constructive ideas or genuine criticisms they may make them through the Students Council. They may also make them to their Personal Tutors and to the various staff/student committees that exist in academic departments.



Students with personal problems may consult their Personal Tutors, their Resident Tutors and the Welfare Officer, Mrs. Denny who is particularly well qualified to deal with domestic problems. The Resident Matron and the College Doctors are always available to help. I am always pleased to see any student who will make an appointment with my secretary. A Counselling service is in the process of formation.

I hope and believe that the College offers every facility for students to live a happy life and complete their course of training to become good members of the teaching profession.

J. L. Smeall.

FROM THE PRESIDENT

Government pressure to increase the number of teachers in training has caused St. Luke's to grow from eight hundred to just under twelve hundred students in the past five years. Unfortunately there has not been an equivalent rate of building to cater for this increase. Future students will see the finish of the new block which, it is hoped, will provide more rooms for the English, Mathematics and Art Departments.

As a consequence of the increase in numbers communication has been an acute problem. This has been felt at all levels. It is not a new problem—but for the first time it is being tackled by the Students' Union. There will be a regular newspaper printed in which contributions will be required from clubs and societies, as well as individuals. It is often pointed out that this College is predominantly orientated towards the sportsman—societies will have the opportunity to prove their worth by a regular contribution to the paper.

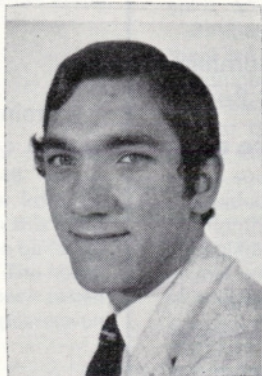
Throughout the country the student has been campaigning both for political and apolitical reasons. This unrest, undoubtedly, rising from the tensions frequently sparked off in American Universities and Colleges, will become more prevalent in all institutions concerned with higher education in this country. What the students are protesting about is often tenuous and "Rent-A-Crowd" has been in regular employment. However, it would be foolish to overlook the real problems that are justifiably being brought to the attention of the "authorities".

New students whether they come straight from school or from

other walks of life need to know something in advance of the activities of the Students' Union they are shortly to be asked to join.

Traditionally the role of the Union has been to organise and sponsor cultural activities on the Campus and this function continues as excellently as it has done in the past.

However, at St. Luke's rapid progress has been made in the principles of accountability and student representative government that are an accepted part of higher education in Britain today. Students take a full part in discussion of such matters as course content, assessment and discipline, with the Staff, the Principal, and soon it is hoped, with the academic and governing boards of this College.



The paradox of these encouraging developments is that the only real problems lie not with those whose objectives and methods differ from ours, but those who agree but beyond that are paralysed. Such an exercise of power can only appear at best baffling, at worst blatantly cynical.

I ask the students coming to St. Luke's to consider their responsibilities towards this community and to discharge them in such a way as to bring credit to themselves and the Students' Union.

D. M. Wyatt

ASSISTANT MASTERS ASSOCIATION

Over 30,000 members

**Membership of the Association is open to
MASTERS teaching in all types of
SECONDARY SCHOOLS**

The Association is represented on the Burnham
Committee and on all important Educational Bodies

**TEACHERS IN TRAINING should join as
STUDENT MEMBERS**

and so obtain

advice on any professional matter
Confidential information about schools the
Association's teaching memoranda at reduced rates
special terms for insurance and house purchase

For full particulars write to:—

**THE SECRETARY, A.M.A.
29 GORDON SQUARE, LONDON, W.C.1**

A . A . M .

The Association of Assistant Mistresses
one of the
Joint Four Secondary Teachers' Associations

**INVITES
WOMEN TEACHERS**
in secondary or middle schools

STUDENTS
training for secondary or middle school work

TO JOIN THE A.A.M.

A is represented on all major
national and international bodies
A negotiates salary scales on
the Burnham Committee
M offers professional advice and
legal protection to members

WHY DELAY? JOIN NOW

Write for further details of the A.A.M. to:—
**THE SECRETARY, A.A.M.
29 GORDON SQUARE, LONDON, W.C.1**

RESIDENT STUDENTS

The student population of the College consists of about 1,200, of which 470 are resident in Wings of the College, Hostels or Hall of Residence.

The Principal delegates the domestic supervision of these resident students to the Warden of Resident Students and the Bursar. The Warden acts as chairman of the ten Resident Tutors. Each hostel has student Proctors who assist the Resident Tutors in the Welfare of the students of that hostel. These Proctors are selected by the Principal and Resident Tutors and must not be confused with members of the Student Council, elected by students, who are concerned with the general and social life of the College on a much broader basis than the hostels. Both Proctors and Student Council work together in the general interest of all members of the College.

BARING COURT

Resident Tutor: C. King.

Proctors: Geoff Jones Adrran Patten

Hostel Telephone: 71836. *Number of Students:* 40.

The notorious Baring Court is famous for a number of reasons. Recognised by its distinctive architecture of the 1948 "semi-permanent temporary" period (definitely not a carry over from the "Baring Villa" the Principal's house, which once stood on this site). The hostel is well known for a tremendous spirit which is to be found amongst its residents handed down from past inhabitants. The hostel motto of "Nothing so permanent as the temporary" has been tested on more than one occasion and the "sin-bin" tie is a prize possession of all courtiers!

BELFIELD HOSTEL

Warden: Mr. K. T. Collins.

Proctors: W. H. G. Hunt, R. J. Lawton. *Hostel Telephone:* 72024

Belfield is one of the smaller college hostels, situated in a quiet, pleasant, private residential part of Exeter about seven to eight minutes walk from the college and about twenty minutes walk from the city centre. The fact that it is away from the main college area is

often appreciated by students after a day's work in college. Despite its small size, the hostel has always maintained a fairly happy and closely-knit community.

CLYSTLANDS HOSTEL

Address: Livery Dole, Fore St., Heavitree, Exeter. *Tel:* Exeter 72837.

Warden: J. Bosanko Esq.

Proctors: Chris Robinson and Dave Musty.

Set in its own grounds about five minutes walk from college, in Clystlands. This hostel offers quiet retreat at the end of the day for the students fortunate enough to reside therein. Several of the study bedrooms are shared and although they may not be the most modern in college, the present residents believe that the amicable spirit, which runs throughout the hostel, is ample compensation.

Besides the common room, which has its own television set, there is a room provided for table tennis, and in the summer weather, conditions permitting, soccer is played on the lawns, when friendships built up over the preceding months are shattered in seconds due to the over zealous participation by certain gentlemen. The hostel does not boast any organised sporting teams, but the occasional soccer match was played last year.

Residents are encouraged to meet the warden, Mr. Bosanko, fortnightly, at his coffee evenings, for general talk, pleasantries, and chocolate digestive biscuits (milk or plain). The calendar of social events was not full last year, but it is hoped to arrange some form of social evening for residents early in the new academic year.

HAIGHTON

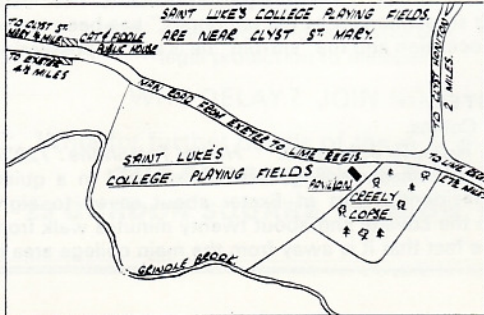
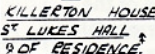
Resident Tutor: A. T. Hodgson, Esq.

Proctor: Bob Brittain, Colin Williams *Hostel Telephone:* 74647.

Number of Students: 40.

Haighton Hostel was built in 1933, with enlargements in 1936 and 1938. It is named after W. P. Haighton Chappel, who when he died in 1928 left the College £10,000 for new buildings and other purposes. Originally the building contained the Gymnasium and the Science Laboratories. In 1962 it was adapted to take the College

COLLEGE



Library and a new range of Student Common Rooms including a licensed Bar. These latter have now become lecture rooms and a Library extension.

KILLERTON HALL OF RESIDENCE

Resident Tutor: Sir Richard Acland, Bart. *Telephone:* Hele (88)280.

Proctors: D. J. Handyside, A. R. Lubanski, C. Trueman.

House Telephone: Hele (88)311. *Number of Students:* Approx. 60. Killerton House, near Broadclyst, is seven miles from the College. It is situated in the heart of the countryside, the gardens, looked after by the National Trust, being famous for their rhododendrons and a variety of rare tree species.

The student intake is split in approximately the following ratio:— 10 third-years; 20 second-years; 30 first-years. Third-year students enjoy the privilege of single study-bedrooms, the remainder, in general, sharing with fellow colleagues. A small, pleasant, and recently re-stocked library caters for the needs of all students and respective television room and common room/music room supply requisite facilities for those so interested.

Killerton students have a pronounced community spirit and as such are reliant on a medium of organisation, the Social Secretary being prominent, working closely with the respective team captains. Sports facilities include "challenging" soccer and rugby pitches, a squash court, and a tennis court. Those interested in cricket, basketball, volleyball, and table-tennis, are catered for and matches are arranged in most of the aforesaid games. The annual rugby match against nearby Rolle College at Exmouth is famous from the Killerton point of view, as is the week-end of the Luke's v. Loughborough game, when two mini-buses, full of Killerton students, travel to London, playing rugby against Barking College of Technology on the Saturday morning, prior to watching the College match in the afternoon, to be followed by "celebrations" in London in the evening.

Other highlights of the Killerton calendar include the Christmas Dinner, indoor games evenings against other hostels, and a Christmas Concert when the students of the House entertain the local

community as a partial recompense for having to tolerate Radio 1 and Radio Luxemburg for virtually 24 hours a day!

This year is going to be a challenging one as the first-year intake is larger than usual. Also, this is Sir Richard's last year as Warden. The House couldn't possibly be the same without him, but there is no more fitting person capable of fulfilling the role than Mr. Jack Goodall. His social presence during the new academic year is eagerly awaited by those students staying on.

MOUNT RADFORD HOSTEL

Warden: Mr. G. Foot.

Proctors: Frank Sobey, Clive Thomas. *Telephone:* 76350

The interior of Mount Radford might not live up to its Georgian frontage and portico, but its atmosphere certainly reflects the "up-roarious" days of the eighteenth century. Residents have a ten minute walk to College if they want breakfast, but who better to wake one up in the morning than Nora, Mary and Gladys (our cleaners!).

The house was originally built as the dower house of John Baring's mansion (demolished 1902) which stood on the grass crescent at the end of St. Leonard's Road. It has been used as a school, a hostel since 1967, and next year it is to be prepared for women students!

Most of the games and cooking facilities available have been acquired by past students out of the profits from parties held normally in the first term.

NANCHERROW, Spicer Road.

Resident Tutor: Revd. G. K. Booth.

Proctors: Nic Varnon

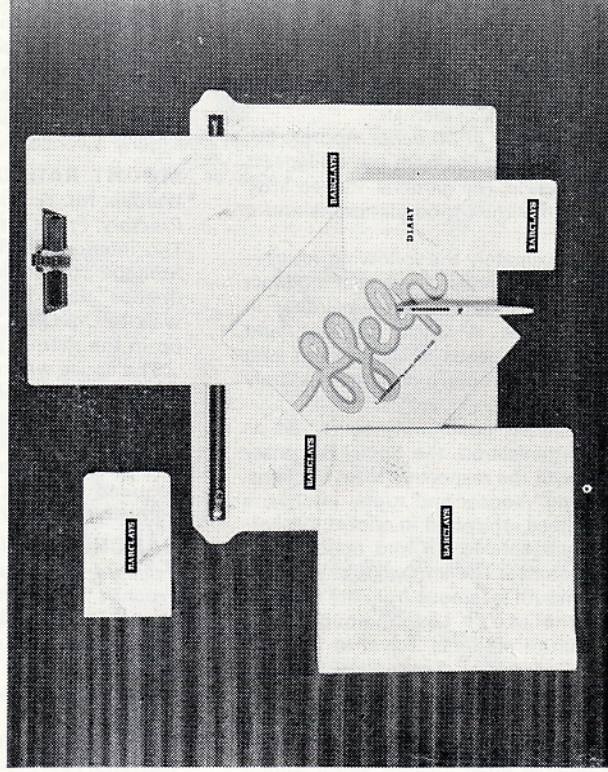
Hostel Telephone: 76879. *Number of Students:* 6.

Nancherrow Hostel is a Victorian House, built in 1898, standing on the opposite side of College Road to the main College buildings. It was acquired by the College in 1944, but was not vacated by the A.T.S. until a year later. For many years it was occupied by a General Medical Practitioner.

Nancherrow. Now housing only six students - this hostel is destined to become the refuge of the post graduates.

Students: A Barclays Cheque Account is free to you.

And so is all this...



As a student with a Barclays cheque account, you get all these:

A free-of-charge cheque account.
Free advice on all financial matters.

Free lecture-note clip-board, ballpoint pen, diary, statement holder, cheque book wallet, smart zip case.

Call in at our nearest branch and open your account as soon as you can.

The Student Kit offer closes on 31st March 1971.

Barclays Student Accounts

—we have ways to help you manage money better.

ROWANCROFT COURT, Fore Street, Livery Dole.

Resident Tutor: W. O. Rice, Esq. *Deputy Warden:* Telephone: 54079.
Proctors: P. Barton, F. Boshier, J. Brodie, N. J. Brodrick, N. Coombes, P. Dyer, A. Hutchings, J. Krispinussen, G. H. Wright (Head Proctor). Rowancroft Court consists of eight blocks of ten study-bedrooms each and a tutor's flat adjoining a common-room, the latter providing television and games facilities. Each block has two floors with bathroom and toilet on each floor and a kitchen/drying room on the upper floor. The study-bedroom blocks are built around a stairway on the Oxbridge pattern.

Within the hostel there are two tennis hard-courts, which are available for use at most times of the year. Also within the grounds is a football field which can be used for numerous sporting activities.

The hostel is two minutes walk from college. Several shops are close at hand, including a newsagents and only a few minutes walk away is the local shopping area of Heavitree.

The Bishop of Crediton opened the hostel in 1961, which stands on the site of the old-walled vegetable garden of Rowancroft House.

ROWANCROFT HOUSE, Fore Street, Livery Dole.

Resident Tutor: F. G. Smith, Esq.

Proctors: J. G. Baker, J. P. Colley.

Hostel Telephone: 58046. *Number of Students:* 31.

Rowancroft House, which shares its site with Rowancroft Court, and is next door to Clystlands Hostel, has an interesting history. Built in 1830 for the banker Sir Thomas Baring, it soon became the home of Sir Stafford Green, and was known as Stafford Lodge. At the end of the 19th Century the House became the home of school for boys wishing to qualify for theological colleges under the direction of one Miss Mary Chambers-Hodgetts. When she died she left the house to the Diocese of Exeter, but the school closed after Education Acts had made such schools redundant and impractical.

During the War it was occupied by the A.T.S.—it was during this period that the House supposedly acquired its “ghost”—after a young woman was murdered on the front door step. Although the

“ghost” has not made a recent appearance, speculation remains.

The House was rented by the College after the War, from the Diocese of Exeter. A High Court Judgement, in 1954, on the complicated will of Miss Mary Chambers-Hodgetts meant that the College acquired the property, with the proviso, still maintained, that the House shall only be occupied by communicant members of the Church of England.

Since then the neglected grounds have been cleared up and tennis courts, and a football pitch laid down; Rowancroft Court was added on the site of the House's former vegetable garden. The House and its spacious grounds are little more than five minutes from the College, a pleasant summer stroll, and not less than invigorating in winter. It is, judging by the requests for re-accommodation a friendly, sociable hostel, with its own particular spirit. Its unique “early morning call system”, initiated by Frederick Smith, and traditionally perpetuated by the resident second year students, makes it unlikely that you will miss your first lecture even though it may not be at nine o'clock!

SOUTH CLOISTERS

Resident Tutor: Revd. F. W. T. Fuller, Warden of Resident Students. *Telephone:* 59385.

Proctors: K. Page, C. Bridge, A. Hollins, W. Judd, M. Mann, D. Welford.

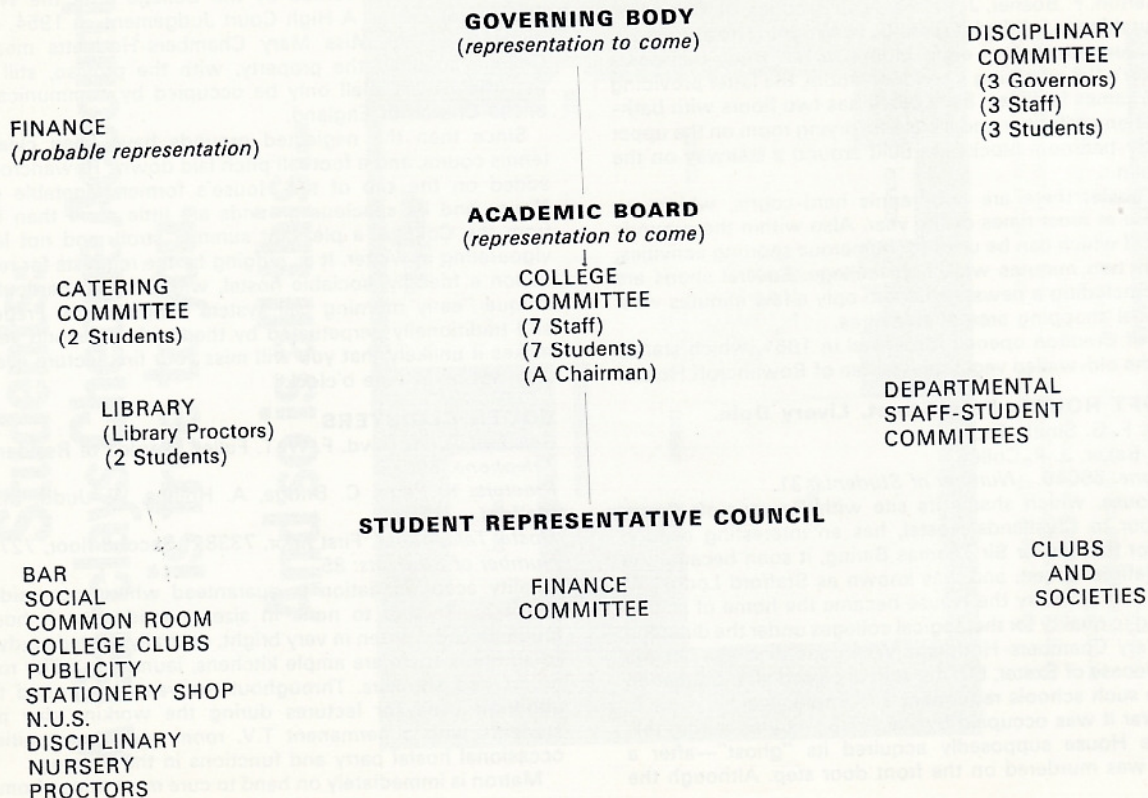
Hostel Telephones: First floor, 73382; Second floor, 72757.

Number of Students: 85.

Quality accommodation is guaranteed when you reside in South Cloisters. Second to none in size or modernity, it houses its 84 students and warden in very bright, centrally heated study bedrooms. In addition, there are ample kitchens, laundries, utility rooms, bathrooms and showers. Throughout the year the ground floor rooms although used for lectures during the working day provide the students with a permanent T.V. room and opportunities for the occasional hostel party and functions in the evening.

Matron is immediately on hand to cure most things from “Dodger's

THE ADMINISTRATION OF ST. LUKE'S COLLEGE



N.A.S.

THE
PROFESSIONAL ORGANISATION
FOR THE CAREER SCHOOLMASTER

FIRST-CLASS SERVICES WITHOUT CHARGE
TO MEN IN TRAINING

*Further details from your College, N.A.S. Representative
or :—*

THE GENERAL SECRETARY
NATIONAL ASSOCIATION OF SCHOOLMASTERS
SWAN COURT, WATERHOUSE STREET
HEMEL HEMPSTEAD, HERTS

Back-ache" to insomnia. Also, the whole building houses the self-service dining hall and the spacious formal dining-room, whose roof is a well known and celebrated land-mark in the college.

Having inherited a tradition that dates back to 1854, from its older parent building Old Cloisters, the students in residence since 1967 have in no way "let the side down". Indeed, the 1st side of every college team usually has to rely on South Cloisters to provide at least one of its members. Also, as the residence chosen by all fourth year B. Ed. students living in, it must be clear that the hostel stands intellectually to the fore.

South Cloisters, then, is not merely a picturesque addition that finishes off the quad but it is a hostel where work and play go well together, a hostel of which the residents are justly proud.

GOVERNING BODY

Chairman: Sir Godwin Michaelmore, K.B.E., C.B., D.S.O., M.C., T.D., D.L., J.P., LL.B.

The Governing Body meets, at least, three times a year. It is made up from members of the College, the Church of England, the University and the City and County Council. There are a number of co-optative members one of which is Sir Stanley Rous, C.B.E., J.P.

The conduct of the College is the responsibility of the Governing Body. It is the ultimate body of appeal.

ACADEMIC BOARD

Chairman: J. L. Smeal, Esq., M.A., J.P.

The Academic Board is responsible for the curriculum for use in the College including the systematic study of the principles and practice of teaching. It also makes arrangements for the examination of students in their courses.

The Board has dealt with many problems and suggestions from the Students' Union, either directly or through its sub-committees. It meets three times a term.

FOR ALL YOUR BOOKS

BLAKEY'S

— Booksellers —

147 SIDWELL STREET

Open: 9 a.m. — 5.30 p.m.

Saturday: 9 a.m. — 1 p.m.

Telephone: 0342 71072

BOOKS — BOOK TOKENS — MAPS

WE DON'T CRIB

WE ONLY COPY Letters, Maps, Diplomas,
References, Certificates

AND SELL Rapidograph and Graphos, Drawing
Pens, 'Uno' Stencils Letraset, Cow Gum
Sketch Pads, Field Books, Graph Paper, Slide Rules,
Drawing Boards, Tee Squares, Brushes, Palettes,
Oil/Poster/Cryla/Polymer/P.V.A./Water Colours



EXETER PHOTO-COPYING LTD.

45 NORTH STREET, EXETER

'Phone 73880

COLLEGE COMMITTEE

The College Committee met seven times during the past academic year 1969-70. It should be noted that this Committee has only power to recommend, but that its weight is both significant and important and that usually any recommendations are carried out. The main items that have been discussed this year are:

1. **Women's Hostel.** It was hoped that this may have been possible for September 1970, but now it is envisaged at a later date (possibly September 1971).
2. **Dress Regulations.** All dress regulations, except when on teaching practice, study practice, etc., as a result of a recommendation from the Committee were suspended.
3. **Student Representation on Governing Board.** It is hoped that student representation will come during the next academic year.
4. **Catering Crisis.** As a result of this the Catering Committee was set up as a sub-committee of College Committee.
5. **Hostel Visiting Hours.** Revised hours for hostel visiting are to be implemented in September 1970. Weekend passes are to be re-named 'Notification of Weekend Absence' and there is to be no limit imposed.
6. **Open Day(s).** It is hoped that some form of Open Day(s) will be possible next year, a Gymnastic Display has already been accepted for the Devon County Show and we hope for more inclusion of College activities at the Show.

LIBRARY COMMITTEE

The Library Committee has met about nine times the past Academic Year, the first of its activities. It is not an executive body, but rather one of recommendation, advice and discussion, on the part of both staff and students, on library business and problems. It has been a valuable meeting point for both staff and students involved, and has provided a pooling point for opinions and criticism of the Library.

CATERING COMMITTEE

Chairman: Dr. P. Travers.

The problems of catering in a college community have led the Students' Union to push for a national enquiry.

Steps are being taken to improve kitchen facilities. The main dining hall is to be turned into a self-service restaurant next year.

The Committee includes members of staff, two students, the Catering Supervisor and the Senior Administrative Officer. It meets fortnightly.

DEPARTMENTAL STAFF-STUDENTS COMMITTEES

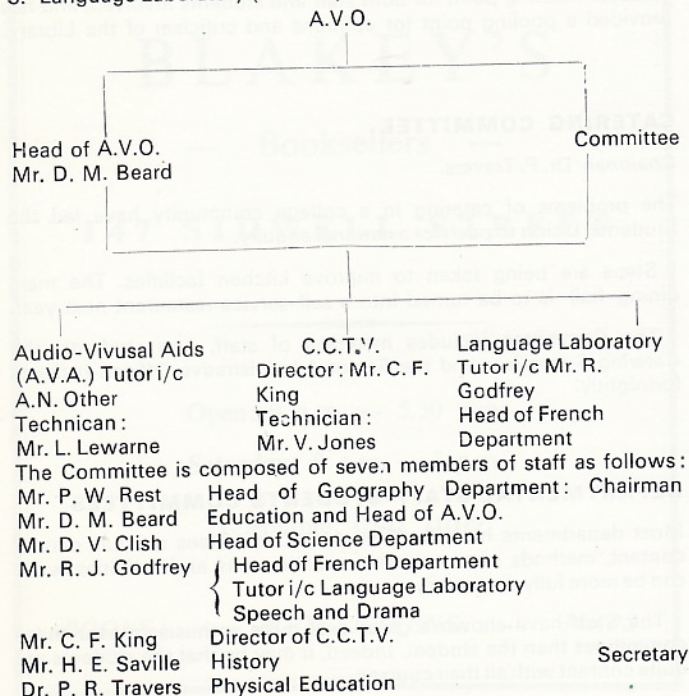
Most departments have Staff-Student Committees so that course content, methods of assessment, examinations and activities week can be more fully discussed.

The Staff have shown a great deal more enthusiasm over these committees than the student. Indeed, it may be that the students are quite content with all their courses.

AUDIO-VISUAL ORGANISATION (A.V.O.)

The A.V.O. is an umbrella unit comprising three sections:

1. Audio-Visual Aids (Room 47 + two adjoining small rooms)
2. Closed Circuit Television Service (Room 3—Studio and Technical Area)
3. Language Laboratory (Room 6).



Mr. G. Carlton, Senior Administrative Officer, is co-opted when matters concerning finance arise.

The Committee is responsible for the promotion, development and co-ordination of the work of the three sections and integration with all departments in the College.

Aims of A.V.O.

1. To assist in the professional training of students.
2. To be of service to students, staff and departments generally within the College.

Audio-Visual Aids Area

This area comprises a large room and two small adjoining rooms. One of the latter is a tape recording room containing five booths; the other forms the A.V.A. technician's workshop. The large room contains a fairly comprehensive range of audio-visual aid equipment including duplicating and photocopy machines.

The equipment and facilities are available to both students and staff. Times when the area is open are posted on the noticeboard in the Chapel corridor. Materials such as duplicating and photocopy paper, cartridge paper for wall charts, etc., can be purchased at the A.V.A. technician's workshop as well as at the Student Union Shop.

First year students are advised to acquaint themselves with the layout of the area and the facilities available at their earliest opportunity.

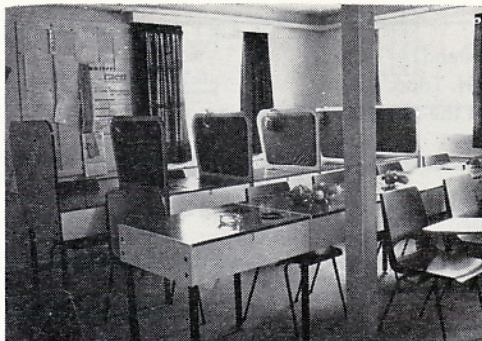
C.C.T.V. SERVICE

This is composed of a studio, control room and small technical area from which programmes are distributed via a network to several viewing areas within the College. The equipment includes two pedestal mounted studio cameras, tele cine unit and video tape recorder. Facilities are available to both students and staff to make programmes. All equipment can be operated by students.

Programmes are commissioned by either departments or the student C.C.T.V. society. Among the activities of the latter is the production of a regular live programme entitled *Luke Alive* which covers college news and activities.

LANGUAGE LABORATORY

The Language Laboratory room is the focal point of the French Department's activities. The Laboratory itself, a 10-booth "Aveley" model, is of very modern design, has full recording facilities in each booth, and is of a type increasingly found in schools throughout the country. It is used extensively for a wide range of exercises, and it is planned to make it available as much as possible for study and practice by individual students.



FRENCH LANGUAGE
LABORATORY



C.C.T.V. CONTROL
ROOM AND STUDIO



A.V.A. ROOM

THE LIBRARY

Librarian. Mrs. W. M. Molland.

Deputy Librarian: Mr. C. H. Tripp.

The Library is situated on the ground floor of Haighton and is open during term time as follows:

Monday to Friday (except Tuesday)	9 a.m. to 10 p.m.
Tuesday	9.30 a.m. to 10 p.m.
Saturday	9 a.m. to 12.30 p.m.

The attached map shows the layout of the Library. At the time of going to press, plans are being made to extend the Library into Room 23, but full details are not yet available.

Students should first consult the Subject Index (e.g. Art, History of: 709) and then consult the Catalogue to find the titles of books on the subject, filed in alphabetical order, according to authors' or editors' names. If a student is looking for a particular book, he will locate it more quickly by referring to the Author Index. Please note that biographies and books of literary criticism on individual authors are catalogued under the subject's name in order to group such books together.

The great majority of the books are available on loan, and have black and white book plates. Reference books have similar book plates in red. With the exception of those in the general reference section, dictionaries, atlases and bound volumes of periodicals, reference books also have a red seal on the spine. These may be borrowed overnight, or Saturday, 12.30 p.m. to Monday 9 a.m. if students obtain a special application form from Mr Tripp or myself and get it signed by their Personal Tutor.

When a student has found the books he wants to borrow, he should fill in the forms available on the charging desk at the entrance to the Library, hand the pink and white slips to the assistant on duty and retain the green slip, which should be returned with the book. Students are limited to three main library books (i.e. with a Dewey decimal classification number) and three Teaching Practice

books at any one time, and may keep them for two weeks; after which they must be returned or renewed. Please be prompt. If a book is out, the desk assistant will reserve it at a student's request.

There are Teaching Practice books in the following subjects: Economics, English, Drama French, Geography, History, Mathematics, Music, Religious Education and Science. These are catalogued separately, alphabetically according to Publisher and have a simple classification mark (e.g. H—History; S.G.—Science General).

Students may obtain Readers' cards to the University Library, for reference purposes only, on application personally, or by letter, to Mr. L. J. Lloyd or his deputy, Dr. Scott. The Institute of Education Library in Gandy Street may be used by all students.

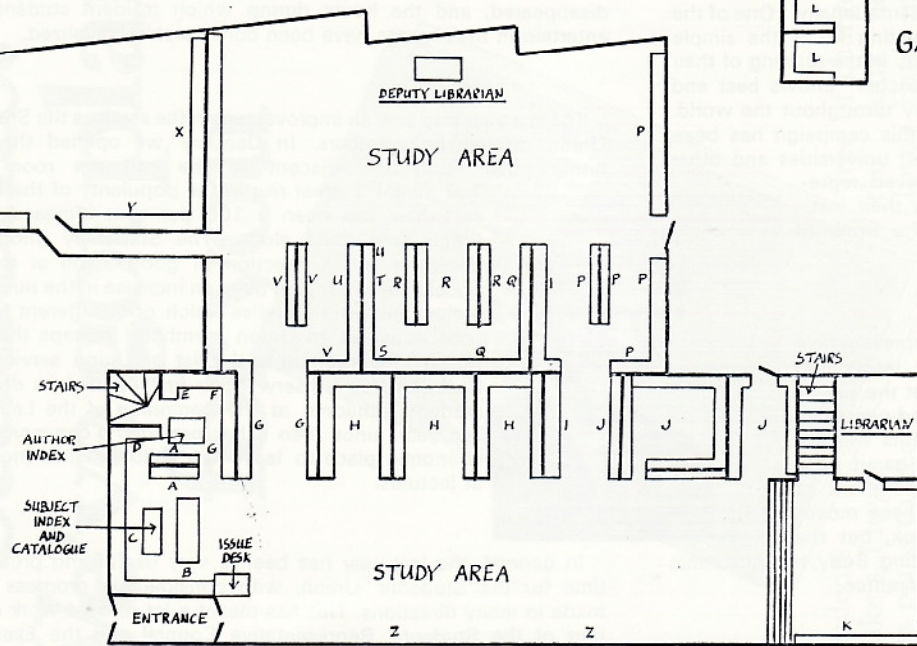
Facilities are available for borrowing books and periodicals, and obtaining photocopies of articles, through the South Western Regional Library Bureau. Students wishing to make use of this service should see the Librarian. Students are encouraged to make suggestions for additions to the book stock and there is a book for this purpose on the charging desk.

The Librarian hopes very much that as many Lecturers as possible will bring their personal students to the Library when it is possible to explain things in more detail. Furthermore, a video-tape concerning library use has now been made, which will be shown early in the term. In the meantime do not hesitate to ask. The Library staff is there to help.

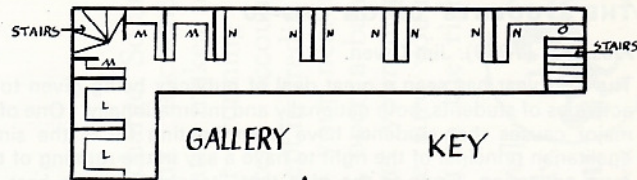
The smooth and efficient running of the Library depends to a large extent on the goodwill and co-operation of the students. Smoking, eating and drinking are not allowed, and talking, in the interest of all concerned, should be kept to an absolute minimum. Brief cases, kit-bags etc. must be left on the racks in the main hall of Haighton for security reasons.

In conclusion the Library is there for your use and enjoyment, and suggestions and constructive criticism are welcome. These may be passed to the Librarians or to the Library Proctors.

The Library



GROUND FLOOR



- KEY**
- A REFERENCE
 - B SHORT TERM LOAN
 - C PHILOSOPHY AND PSYCHOLOGY
 - D SOCIOLOGY
 - E ECONOMICS
 - F SOCIAL WORK
 - G EDUCATION
 - H ENGLISH
 - I BIOGRAPHY
 - J HISTORY
 - K MUSIC
 - L CHILDREN'S BOOKS
 - M FRENCH
 - N RELIGIOUS EDUCATION
 - O TECHNOLOGY
 - P GEOGRAPHY
 - Q MATHEMATICS
 - R ART
 - S GENERAL SCIENCE
 - T PHYSICS
 - U CHEMISTRY
 - V BIOLOGY
 - W ANATOMY AND PHYSIOLOGY
 - X P.E. AND SPORT
 - Y PERIODICALS
 - Z ENCYCLOPAEDIAS AND ATLASES

N.B. BOOKS MAY FROM TIME TO TIME BE MOVED TO DIFFERENT LOCATIONS FROM THOSE SHOWN ON THIS PLAN

THE STUDENTS' UNION 1969-70

President (1969): Jim Owen.

The past year has seen a great deal of publicity being given to the activities of students, both nationally and internationally. One of the major causes that students have been fighting for is the simple egalitarian principal of the right to have a say in the running of their own education. Gone is the idea that "teacher" knows best and "representation" has become the battle cry throughout the world. Despite a lot of adverse public opinion, this campaign has been remarkably successful in this country. Most universities and other colleges of higher education have achieved representation on the powerful committees in their institutions, or alternatively, they are on the brink of doing so.

At St. Luke's, last year's Students' Representative Council were successful in getting major reforms in the college government accepted, without the use of the rather dramatic methods which proved necessary in other colleges. The effects of these reforms will not be felt until later on this coming year, as it was necessary to gain the approval of the Department of Education and Science. The full details of these moves can be found else where in this handbook, but the principal bodies affected are the Governing Body, the Academic Board and the Governor's Disciplinary Committee.

Any major reforms at St. Luke's move against a climate of tradition, some of which goes back for a hundred and thirty years. However, for the past few years the wind of change has been blowing away

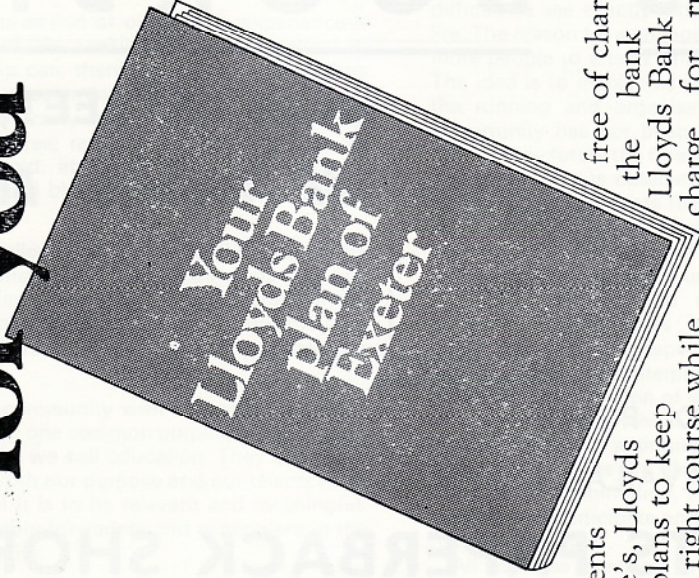
a few of the old cobwebs. In particular, the last college year saw some reform of rules and regulations. Dress regulations appertaining to lectures and formal meals have been abolished; the need for resident students to gain permission to go away at weekends has disappeared, and the hours during which resident students can entertain in their rooms have been considerably liberalized.

The last year also saw an improvement in the services the Students' Union offered its members. In January we opened the new, rather plush, club bar adjacent to the common room. This has meant a great rise in the popularity of the bar, in fact there has been a 100 per cent increase in the lunch time trade alone. The Stationery Shop now carries a wider selection of goods; still at reduced prices. There has also been an increase in the number of Union clubs and societies which offer different leisure time activities to Union members. Perhaps the most noteworthy addition to the list of Union services has been the Day Nursery which first opened its doors to students' children at the beginning of the Lent term last year, since then it has provided a convenient and economic place to leave the children while mother is at lectures.



In general, the last year has been a very useful and productive time for the Students' Union, with considerable progress being made in many directions. This has meant a lot of hard work on the part of the Students' Representative Council and the Executive, probably to the detriment of their college courses. However, I have every confidence that the coming year will see even more progress and improvement for the students in this college through the work of the Students' Union, under its present leadership.

Students! We've got plans for you



Students of St. Luke's, Lloyds Bank has plans to keep you on the right course while you're at college. We're giving away large-scale, detailed street maps of Exeter to all students who open a bank account with us.

These street maps have places of interest and Lloyds Bank branches clearly marked, as well as a comprehensive street index. The maps are

free of charge. So are the bank accounts. Lloyds Bank makes no charge for running a student's current account, provided it is kept in credit.

So go to your nearest Lloyds branch, open a bank account and get your map. Then you'll be sure you're always heading in the right direction.

Financially as well as geographically.

Lloyds Bank looks after people like you

Main Exeter branch: 234 High Street, also at 83 Sidwell Street
2 Alphington Street, St. Thomas, Heavitree and Pinhoe



PITTS BOOKSHOP

HIGH STREET, EXETER
THE COLLEGE BOOKSELLERS

LARGE SELECTION OF POSTERS
AND PAPERBACKS AVAILABLE AT :

PITTS PAPERBACK SHOP
CATHEDRAL YARD

THE COLLEGE CHAPEL

The College Chapel belongs to all members of the community, both staff and students. All are welcome to make themselves at home in it: and our freedom in worship gives each of us the opportunity to develop a sense of belonging by participating in it.

Worship is, simply, the interpretation of our human experience—reaching out for the purpose of life, seeking the reality behind it, meeting God. Forms of worship can, therefore, be as many and as varied as our experiences. So we seem to provide an atmosphere in which those leading worship can freely order it as is most meaningful to them. For worship must be free, real and sincere if it is to be genuine. What we seek to avoid, above all else, is any kind of pressurised conformity or of moral blackmail to take part in Chapel worship.

As a Church of England College we are naturally loyal to its traditions. There is Holy Communion at least once every Sunday, and at least once on a week day, including the Saints' Days of the Prayer Book year. There are four clergy on the staff: and they are available to any student at any time. There is also opportunity for seeking Confirmation.

But the College is a special community with a special purpose—not a parish. All its members have one common purpose—the process of growth and development that we call education. They also have many varied gifts and talents. Both our purpose and our talents must be brought into our worship, if it is to be relevant and meaningful. That is why there must be freedom for variety and experiment in the worship of our special community.

Worship itself involves growth and development. Indeed, in seeking to increase our awareness and sensitivity and understanding, it may be the deepest education of all.

Dr. N. J. Bull,
Acting Chaplain.

THE FUTURE OF CHAPEL IN COLLEGE

A Comment:

Since the departure of our full-time Chaplain earlier this year, the Chapel has been a place of considerable change and re-organisation. At the moment Chapel affairs are in an experimental stage, so it is difficult to see exactly what its future will be in relation to College life. The reason for a change in the old system is to try and encourage more people to attend Chapel Services, both Sunday and weekday. The idea is to involve as great a number of students as possible in the running and organisation of services. So far, however, this opportunity has not been taken advantage of to its fullest extent. To have any future the Chapel needs the active support of the students and unless this is obtained then it will soon lose its importance in College life. If students feel that there is a need for further changes in the format or organisation of services then they should not merely criticise, but offer practical suggestions or alternatives which could be considered and acted upon.

Morning services are run Departmentally each week. Each Department contributes by approaching religion from different angles and exploring aspects of the ultimate significance of Life. As well as its religious interpretation as a search for meaning, this type of service is a collation of ideas and attitudes from different sections of the community which, in turn, use a variety of techniques and media to arrive at a singular objective.

Sunday services are also flexible in their content and approach. There is the Communion, in which students are encouraged to help prepare and participate and the "Open Service" which also varies in form and content.

All of these Services have been designed in order to bring the students together as a community to search, through religion, for the purpose for living. If this is to succeed and thereby assure a future for the Chapel as an integral part of College life then it must have the support and co-operation of the students.

A. J. Robin Goddard.

STUDENTS REPRESENTATIVE COUNCIL

The Council is elected by the student populace and comprises a President, two Vice-Presidents, five third years, five second years and five first years. There is also one post for the fourth year and the post-graduates. The elections for the first year, post-graduate and fourth year posts are held within six weeks of the Autumn Term.

Throughout the coming year it is hoped that the Council will represent the students' view. It can only do this if students participate in the welfare of their own college.

The Council meets once a month, although in emergencies they can meet within twenty-four hours. In these meetings the business of the college is discussed. Amongst the proposals that the Union will have to discuss is the idea of an Open Day or Days and an exhibition at the Devon County Show.

EXECUTIVE

To discharge the work load that arises from day to day, the Council itself has an executive. This year's executive is Derek Wyatt, Peter Pascoe, Frank Sobey, Steve Wallington, Richard Cunliffe and Dai Bunyan. They are also responsible for the policies of the Union,

FINANCE COMMITTEE

To enable all clubs and societies to receive their annual allocation they submit to the Finance Committee proposals of forthcoming expenditure. The Committee in turn discuss these proposals and submits its own recommendations. These are usually accepted after further discussion with the treasurers of the clubs and societies.

THE CROSS KEYS COLLEGE BAR COMMITTEE

Bar Steward: Reg Wyatt.

Bar Chairman: Bob Barlow.

Secretary: Bob Pendleton.

Assistant Sec.: Phil Bramley.

1st Year Rep.: Malcolm Harrison.

2nd Year Rep.: To be appointed.

This student committee is responsible for the entire, smooth efficient running of the bar. It is attempted to keep prices down to a minimum, such as profits needed for expenses will allow, and provide students and their guests with such facilities in their bar that they can perhaps feel proud of it. Since the new bar opened last year (at last) exactly this, has been done and in some cases the bar has become the central meeting place for various clubs after finishing their matches and numerous society meetings. But the committee feels that even more can be done for YOU. . . . Because after all, it is your bar. We need YOUR ideas and suggestions which we will try to put into practice if at all possible. We want YOU to have more of a say in the running of YOUR bar.

Come along and see it for yourself. . . . It's open every night and every lunch time (except Saturday).

ST. LUKE'S COLLEGE DAY NURSERY

Because of a growing number of women students at St. Luke's College, many with children, the students union decided that something could be done to help them; especially those mothers with children under five years of age. So, in 1969 they began making plans for a Day Nursery.

After much hard work and difficulty the plans took effect and on 5th January, 1970 the Day Nursery opened. Although it has been operating for only two terms it is successful and has already proved its usefulness by being in easy reach of the college, and by cutting the costs that some mothers were having to pay elsewhere to have their children cared for.

At present the Nursery is registered for only twelve children between the ages of two and five years, and the places are reserved for children of students at St. Luke's College; but we hope to be able to expand at a later date.

The Day Nursery is open during term time, daily from 9 a.m. to 5 p.m. except on Wednesdays when it closes at 1 p.m., and lunch and tea are provided. The Nursery supervisor is a registered nurse, and the helpers are either qualified teachers or women who have had experience of young children.

The charges are £2 10s. 0d. per week per child, including meals, or 6/- per half day session and 1/6d. for lunch.

Enquiries about the Nursery are welcome at anytime and may be addressed to the: Students Union, Day Nursery Committee, St. Luke's College; or to: Mrs. Evans, Nursery Supervisor, 7, Baring Crescent, Exeter.

the

RECORD SPECIALIST
10% STUDENT DISCOUNT



Telephone: 71999 and 72775

17 PARIS STREET
EXETER

BANK

LEFT

SOCIAL COMMITTEE—*Chairman:* John Freter.

Last year's Social Committee which effectively came into being after Christmas proved a most successful and profitable one, culminating in an excellent Summer Ball. This year's committee has not been finally resolved but under its present Chairman it ought to fair well.

The Committee is responsible for the social events, be they discos, hops, balls or concerts, of the College. There is a great deal of work involved and this often goes unappreciated.

PROCTORS—*Chairman:* Frank Sobey.

This Committee was the result of the initiative displayed by the Chairman, his co-director and managing director, last term. Essentially it was begun to open up the channels of communication so that constructive criticisms could be passed on to the Council. It is hoped that it may develop and produce working recommendations on hostel rules, on sizes of rooms and on furniture. An inter-hostel five a-side soccer competition with the University is being arranged.

STATIONERY SHOP

Chairman: Peter Pascoe. *Manager:* Bob Adamson.

Shop Assistant: Mrs. Pauline Long.

Hours: Monday, Tuesday, Thursday, Friday—9.00 a.m.—2.30 p.m.
Wednesday—9.00 a.m.—1.00 p.m.

The Stationery Shop, set up some years ago as a service for students, has now expanded far beyond its original conception.

We have the widest possible range of stationery for students and also a large selection of new and second hand books. We stock a great deal of specialised materials for various departments, for example, mathematic department and art materials. We now stock certain brands of confectionery which has proved very popular.

Students can also avail themselves of Roneo and Banda facilities through the Shop.

SPORTS CLUB COMMITTEE—*Secretaries:* Ian F. Smith; John Roberts

This Committee arose out of discussion with all the clubs in college, it was another step in the opening up of communications. Initially it will act as an information bureau. It could be mandated to produce a small report on such time consuming issues as meals and how to order, coaches and how to cancel, teams and how to train . . .

It might eventually have time to look at the sporting problems within the college and to suggest which way forward St. Luke's must go in the next decade. Certainly it has the makings of a very formidable committee.

SAVE

Money! Money! Money!

All your Stationery needs; Oxford Pads; Ring Binders; Wallet Files; College Notepaper and Envelopes, etc., etc.

Top Quality Goods at Rock Bottom Prices, Shop at the Student Shop run by Students for Students

**ALL YOUR STATIONERY NEEDS
SAVE MONEY! MONEY! MONEY!**

go to the

**STUDENTS'S UNION
STATIONERY SHOP
opposite Baring Court**

NATIONAL UNION OF STUDENTS—*Secretary:* Bruce Thomas.

The N.U.S. is our national union. It has its headquarters in London. It is nominally apolitical but somehow attracts a good deal of left wing support. The president is Jack Straw. The N.U.S. has as many as a hundred staff members working on the manifold problems within such an organisation which takes in, all fields of higher education. Recently they have published reports on the Q and F debate; there is a working party established on the comprehensive university and they, more than any other union have successfully brought about the enquiry into teacher training. The outcome of this is eagerly awaited.

If the S.R.C. has a problem—for instance with the legality of the union as a charity—it is the N.U.S. that advises. If we are not satisfied with the policies of the N.U.S. then, twice a year we have a chance to alter them through the N.U.S. Conferences. The next one is in November. We are trying to bring about an enquiry into the financing of catering in Colleges of Education. Another issue is the Universities Athletics Union and a further one still is the future of Grants in which we are hoping to co-operate in a motion with the University of Exeter. Often our problems can be dealt with through regions. The N.U.S. has nine regions, and our is Region 7. It stretches from Oxford to Penzance. Within this region there are Area organisations. Down on paper it seems as though every available opportunity has been made to cater for the student unions. However, Region 7 has remained virtually impotent since its inception. We hope to do something about this.

It is important to realise that we have a national union that represents us on over forty national educational boards and enquiries. The organisation is there, its success depends very much on the activity of its constituent members, of which we are but one.

PUBLICITY COMMITTEE

Chairman: Mike Church

The day to day publicity of the Union is entirely the responsibility of this body. The Union has acquired a window space in North Cloisters to go alongside those of higher morals. Assuming that people can read, this will enable the College to see more clearly the workings of Council.

A new noticeboard is planned in the Common Room and this too will provide a vantage point for important Council news.

DISCIPLINARY COMMITTEE

Chairman: Derek Wyatt.

Occasionally students have to be reprimanded for acts of an "anti-social" nature. Usually students are fined. Occasionally though the matters are more serious, in which case they can be referred to the senior partner.

SALES

SERVICE

BLAND BROS.

MECHANICAL & ELECTRICAL ENGINEERS

We Buy, Sell, Part Exchange, Repair, Hire

Radios, Record Players, Tape Recorders,
Electric Shavers, Cameras, Musical
Instruments, "Hi-Fi" Equipment, Sports
Gear, Records, Domestic Appliances,
Televisions, Typewriters, Binoculars,
Reconditioned and New Goods

20 NORTH STREET

EXETER

Phone: 72906

COMMON ROOM COMMITTEE

As yet no one has been found willing to take on what has been in the past a rather nebulous appointment.

The main Common Room was decorated two years ago. It is not due for another coat of paint for three more years. The students don't appear to mind the conditions that they live in.

Action has been taken over the rugby type scrums that form from 10.30 a.m. onwards. Plans for increased lighting effects and a split-level floor, have been made, and these will be installed as soon as enough money is forthcoming.

It does appear as though the Common Room will need some attention during the year. This would therefore obviate the need for some students to take on the responsibility.

RAG AND ARTS FESTIVAL 1970

This year the College entered the Exeter Rag/Irish Festival with a great deal more support than in previous years. Several teams entered the Raft Race—a principle event—and a prize was won.

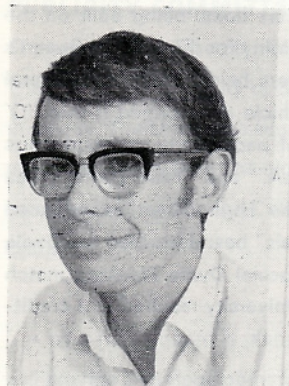
The morning of the procession saw six floats being built on the grass outside South Cloisters. Responsibility for the Festival Queen's Float led to a profusion of paper flowers being assembled; liberal splashing of green paint on an old vehicle transformed it into "O' Rafferty's Car," while an abundance of paper darts and numerous cups of tea were needed for the "I.R.A." and "Mad Hatter's Tea Party" respectively—the crowds in the High Street experienced samples of both! A "Haystack on Wheels" best described the Dwile Flonkers' float and, the result of the special Dwile Flonking match arranged between St. Luke's and the University resulted in a creditable draw.

The many people involved, all had their share of getting wet, either in the Raft Race or during the mile long procession, but all thoroughly enjoyed Rag Day. In all there was a whole month of events this year, with the Arts Festival and Community Projects Scheme and altogether several thousand pounds were raised for the named charities.

It is hoped that next year many more people will take part in this growing event in the St. Luke's College Calendar, and with the possibility of the College holding its own Rag, *everyone's* support will be vital.

J. J. Spear,
Miss J. A. Spencer.

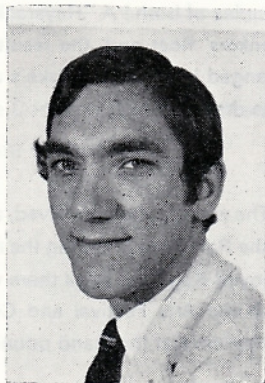
**STUDENTS REPRESENTATIVE COUNCIL
EXECUTIVE COMMITTEE, 1970-71**



PETER PASCOE



FRANK SOBEY



DEREK MURRAY
WYATT



DAI BUNYAN

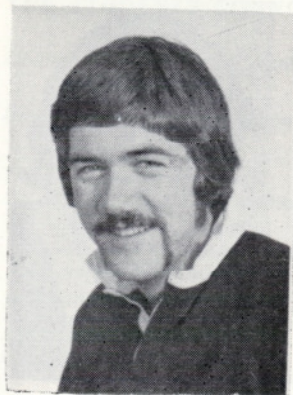


STEVE WALLINGTON



RICHARD CUNLIFFE

**STUDENTS REPRESENTATIVE COUNCIL
MEMBERS AND PERMANENT STAFF 1970-71**



MIKE CHURCH

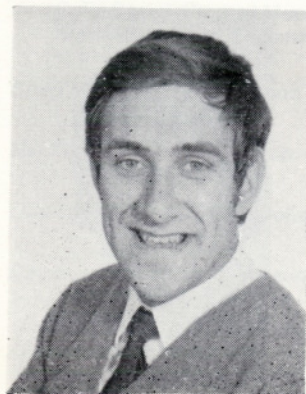
JOHN FRETER



Mr. A. BRANNAM



Mrs. J. MITCHELL

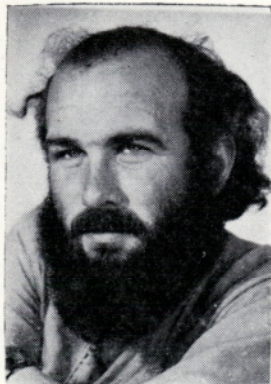


TERRY SEALEY



BRUCE THOMAS

**STUDENTS REPRESENTATIVE COUNCIL
MEMBERS AND PERMANENT STAFF 1970-71**



COLIN SPEIRS



DAVE HAWKINS



IVOR DUGGUA



Mr. R. WYATT



Mrs. P. LONG

THE STUDENTS COUNCIL 1970-71

Chairman: Derek Murray Wyatt

Vice-Presidents: Peter Pascoe ; Frank Sobey

Third Year Representatives:

Diary Bunyan, Sixth member of the Executive
Mike Church, Publicity
John Freter, Social Committee
Terry Sealey, Catering
Bruce Thomas, N.U.S.

Second Year Representatives:

Richard Cunliffe, Treasurer
Ivor Duggua, Library
Dave Hawkins, Elections Officer
Colin Speirs, Council Meeting Secretary
Steve Wallington, Secretary

Shop Manager: Bob Adamson

Bar Secretary: Bob Pendleton

Duplicating Officer: Chris Bollard

Day Nursery: Caroline Watson
Peter Thwaites

Sports Clubs: Ian F. Smith
John Roberts

To be elected: Post Graduate Representative
Four Year Representative
First Year Representative
Common Room Secretary
Social Secretary

PERMANENT STAFF

Treasurer: Mr. A. Brannam

Since last October Mr. Brannam has tried to unravel the mysteries of the Students' Union and its Clubs and Societies. This he has done with cool efficiency and it is to his credit that the Union is beginning to look like a safe financial asset.

Secretary: Mrs. J. Mitchell

A most industrious nature coupled with a businesslike mind and pleasing personality sums up our charming Union Secretary. Mrs. Mitchell is responsible for the typing, and in some ways the administration of the Union. She also helps us out in the shop.

Shop Assistant: Mrs. P. Long

Mrs. Long has been of invaluable assistance in the Stationery Shop which in itself has been expanded through the year.

Bar Steward: Mr. Reg Wyatt

We have been most fortunate in obtaining a barman who has a dry sense of humour. Mr. Wyatt performs a difficult job well, particularly when the bar is undermanned.

FINANCING THE STUDENTS' UNION

Money has been a delicate problem with the Students' Union. Last year four hundred students decided that they would not pay the Union subscription of £3. The Union therefore had to manage on £1,200 less than they ought to have done. This sort of situation will cripple the clubs and societies as well as the Union, should it re-occur again.

The new student might ask why the Union fee cannot be levied on all its members. The truth of the matter is a legal one. As a college of education we are paid, handsomely by the standards of others, £5 per student from the Department of Education and Science. This amounts to approximately £5,500. Every student is therefore a member of the Student Union. We ask the students to pay an additional subscription of £3 so that our clubs and societies can function at full capacity. We ought therefore to have a working capital of £8,800. Every member of a club or society has to be a paid up member of the Union if his or her club is to receive its allocation.

In this book there are listed thirty-five clubs and societies. The Rugby Football and Association Football Clubs are allocated just over £1,000 apiece. Travelling accounts for four-fifths of their expenditure. New clubs can claim an allowance of £15 for their first year—this expenditure rises as the club falls on its feet.

The cost of living has risen. It doesn't become any cheaper to travel to London. It doesn't become any cheaper to buy equipment. The Union has to pay its permanent staff; it has to buy stocks for the Shop and the Bar; it has to finance the day-to-day expenses of the Union. This alone accounts for £2,500.

The student who can say he has had an education divides his time equally between his academic studies and his recreational pursuits. For the student population at this College to maintain its reputation, gained through this equal division of interest, it is essential that everyone realises their responsibilities to their fellow colleagues.

If everyone paid their subscription, we could begin to do something about the Common Room, about the Redgra, about the College. The remedy is in everyone's hands.

Telephone: 75020

3 minutes from College

R. T. GOUGH

69 Magdalen Road

Exeter

NEWSAGENT
STATIONER

TOBACCONIST
CONFECTIONER

STUDENTS STATIONERY REQUIREMENTS

OXFORD PADS

PAPERS, MAGAZINES, ETC.

DELIVERED DAILY TO THE COLLEGE

CLUBS AND SOCIETIES

The following notes are brief and give a short background of all the various activities organised at a Club level throughout College. For further details contact the Club Secretary who will be only too pleased to answer any queries. Each Club also has its own notice board space. Watch notices to keep fully up to date.

THE ARTS ASSOCIATION

The Arts Association is a vastly exciting new venture aimed at you. Its aim is to bring the Arts into the daily life of the college. If you think the Arts are exclusive or highbrow you will not like the way we work. From the first dynamic week of next term things will be happening.

We hope that from now on, hardly a week will go by without some event: a concert, a play, an artistic happening—or perhaps just a party.

We hope to bring all this to where you are. We do not want you to have to put on your dress suit and go out to enjoy the arts. We want them to be an informal part of your daily life.

We know that none of this can work without your help. This is your chance. If you are an expert on the Austrian Elk Horn we can provide an audience. If you want to listen to jazz we can provide a concert. If you want to produce Beckett or a Brian Rix farce we can help you. Whatever you want we can provide. But only if you help us.

For information please contact the co-ordinator David Bowgett.

ASSOCIATION FOOTBALL CLUB

President: W. O. Rice, Esq. *Chairman:* D. Humphries.
Club Secretary and Western League Secretary: N. J. Brodrick (D. Hawkins). *Treasurer:* N. Coombes (A. Jeffrey).

South Western League Secretary: J. Krispinussen (G. Pledge).
Exeter and District League Secretary: P. Barton (T. Bean).

(The new officials in brackets to take office at the end of November.)
Season 1969/70 was not one of the most successful seasons in the history of soccer at St. Lukes. But when one realizes that the top

two sides play in the highly competitive Professional Westcountry Leagues it is not all that surprising especially in these days when professionalism seems to count for more.

The 1st XI operate in the Western League playing such sides as Torquay United Reserves and Bristol City Colts. The 2nd XI play in the semi-professional South Western League and meet the top teams in Cornwall. In order to prove ones ability the College has three sides in the Exeter and District League at varying levels. There are training sessions every week occasionally under professional supervision.

Two years ago the Club undertook a very successful tour of America. The Club has been established since 1866, includes Sir Stanley Rous C.B.E. as an old member, and its aim from then and now is "to promote a high standard of football."

ATHLETIC CLUB

Captain: Ian Martin.

Vice-Captain: Keith Moore.

Secretary: Ian Clipstone.

It is heartening to report that in all aspects the Athletic Club has had a most successful year, highlighted as it was by the spectacular home meeting against Cardiff Training College and the full Royal Navy Team. The Club exceeded all expectations and after nineteen events, a mere thirteen points separated the three teams. Furthermore, the organisation and presentation of the meeting brought considerable credit and prestige to the Club as a whole.

The Inter-Year Match was another successful home presentation ending in a tie between 2nd and 3rd year teams. Our away fixtures included a visit to Birmingham University, who, a week later took on the A.A.A., and the P.E. Colleges Championships at Madeley where Jim Dixon and Terry Harry both won titles. The standard of team performance throughout the season left no doubt that the Club is capable of holding its own in top-class competition.

The Club, of course, functions throughout the whole of the Academic Year, and during the coming winter it is planned to send members to Cosford, where considerable success has been obtained in the past. It is further hoped to make use of their facilities for training

FORREST RENTING

OFFER THE LARGEST RANGE
OF SELF-DRIVE CARS, VANS,
AND BUSES IN EXETER

Telephone 77077

FOR IMMEDIATE ATTENTION
TO YOUR CLUB'S OR YOUR
OWN REQUIREMENTS

purposes after each meeting. Indoor training sessions will take place each week at the College with interest added by the Indoor Pentathlon Championship. All in all, the coming year should see the Club confirming the success achieved in 1970.

Paul Dyer,
Honorary Secretary.
1969-70

BADMINTON CLUB

President: A. Hodgeson, Esq. *Captain:* P. Stacey.
Vice-Captain: D. Arthurs. *Treasurer/Secretary:* W. McKinley.
The club, once again this year, is running four teams. Three mens VI's and one mixed team. The 1st and 2nd VI's will play in the Exeter and District League; the mixed team and the 3rd VI will play a number of friendlies.

It is hoped that the first team will maintain its reputation in the 1st Division of the League of being a team nigh on impossible to beat; that the second team will improve and become strong opposition in the 2nd Division and that the mixed and third teams will give an added attraction to the whole club in general.

Unfortunately the mixed team never really got off the ground last season and we are calling on all ladies who are interested in Badminton to come along to the club sessions on Wednesday afternoon and evening, Friday evening and Saturday afternoon throughout the term. We are sure that they would enjoy it as the club is one of the most sociable and enjoyable in the College. So ladies, come along next season and at the very least have a go—the same goes for new men and old as we are interested in you as well (no matter what your standard is)—to run a progressive club we need you.

Last season we ran a number of friendly matches against London University, Bristol University and King Alfred's College and this year it is hoped to run more friendlies against such and similar opposition for all the teams in the Club.

We hope to see you in the coming season.

BASKETBALL CLUB

Captain: D. Patterson.

Secretary: S. Gubby.

Treasurer: M. Moore.

Club Coach: V. H. Ambler.

The past season has been the best so far for the club, and in particular for the Premier Squad.

As usual, we have won all there is to win in the South-West that, is, the Exeter and District League Division 1, the John Webber Cup, the South-West Area Knock-out Trophy. This season, with some re-organization within the club, it is hoped to make First Division basketball available to more members of the club, possibly to the exclusion of some of the regular members of the Premier Squad, who have a very heavy season travelling to matches all over the country.

On a wider horizon, we have travelled the country far and wide meeting with a high degree of success, with notable victories over Aldershot Warriors and Loughborough Colleges (twice) to our credit. A major disappointment was our dismissal from the National Championships by one point after travelling all the way to Liverpool. We hope to improve on that performance this year.

As National College Champions for the past two seasons, we hope to be able to report a hat-trick of successes when you join us, as this competition had not been played at the time of publication.

During the Easter vacation the Premier Squad had a highly enjoyable and successful tour of Denmark and it is hoped to arrange another tour for this coming Easter.

The Second and Third teams have performed well throughout the season and have contributed to the club depth and spirit considerably. They also provide an opportunity for those students wishing to play who have not played much before. It is hoped that many more students will make use of this opportunity.

The club extends a warm welcome to all our new collegiate colleagues and hopes that you will grace us with your presence either on the court or on the balcony—you are welcome to do either.

Dave Patterson, *Club Captain.*

BOAT CLUB

President: Rev. F. W. T. Fuller. *Vice-President:* Rev. G. K. Booth,
Mr. J. Durrant, Mr. M. Stewart.

Captain: M. Mann. *Vice-Captain:* A. Fraser.

Secretary: N. Richardson. *Treasurer:* M. Uffindell.

Boatman: S. Wilson.

With the River Exe only half a mile away, our College is one of the few that have a Boat Club.

Last year saw one of the most active three terms rowing, with some successful and rewarding fixtures.

During the Michaelmas Term we row in private fixtures against B.R.N.C. Dartmouth, R.N.E.C. Manadon, Seale Hayne College, Exeter University and Exeter Rowing Club.

In the Lent Term the Club sends crews to "Head" races—these are usually three to four miles long! Last year we competed at Gloucester, Bristol, Exeter University's Head of the Canal Race, and the Tideway H.O.R. Putney.

In the Summer Term, we competed in the Head of the Exe, plus Worcester, Monmouth, Hereford and Plymouth Regattas. Our highlight of the year was the visit of a crew to row in Rennes Regatta, France, Exeter's twin city. It is hoped to continue this tradition next year, and also to compete in Henley Royal Regatta.

There is plenty of scope for different types of rowing. We compete mostly in fours, but occasionally in eights and single sculls.

The Club needs and has room for a greater capacity of students. If you have not rowed before, don't worry, we will teach you! There is scope in the Club for the serious and not-so-serious oarsmen and oarswomen. Last year saw an increase in women membership which we hope will be continued next year.

CANOE CLUB

Captain: Alan Bauer.

Treasurer: Terry Harry.

Secretary: John Anderson.

The Canoe Club now thriving with an increase membership and "glass" canoes, intends to extend into the different fields of canoeing.

The Club welcomes all members of the College, especially freshmen to join in the activities. The College pool is used two evenings a week to practice stroke technique and rolling.

Last year quite a number of canoe "motor Morons" learnt how to roll in one evening. A good supply of water in this area permits canoeing on the river where shooting the weirs is experienced or sea canoeing which includes surfing. Quite a number of surf trips were organised last year to North Devon, where man plus canoe fought the waves. Every Whitsun the Club has its "Surf Safari" whereby members camp for four days so that they can surf from dawn to dusk. The Club intends to diversify, and racing and Canadian canoeing will be introduced. A number of members hold the B.V.C. proficiency award and the instructors award.

Anyone interested in this fascinating sport should come along to the College pool on a Club evening.

CERCLE FRANCAIS

Chairman: Edward Poore.

Secretary: Mike Brown.

Treasurer: Tony Johnston.

The aim of this recently formed society is to promote an interest in France and the whole spectrum of French life. Membership (ten shillings p.a.) is open to students from all departments.

For the year 1970/71, we intend to provide a programme of lectures, films, expeditions and entertainments. All new ideas will be welcome.

SOCIETY OF CHANGE RINGERS

The ringing society welcomes all students who are either ringers or interested to visit St. Mark's church, Pinhoe road, on a Thursday evening, for the weekly practice. The practice starts at 6.30 p.m. until 8 p.m. and is combined with students from the University, St. Loye's and Rolle College. Collectively, ringing in Exeter is strong, and we

ring on Sunday mornings at Heavitree and also at the Cathedral three times a month with the local band.

There will be an informal meeting at the beginning of the Autumn Term concerning going up to the local tower and a notice will go up in Club Alley.

For further details, contact John Anderson, Rowancraft Court, or via the letter rack.

THE CHAPEL CHOIR

Director o, Music: P. A. O'Brien, Esq., M.A., F.R.C.O.(CHM).

Organ Scholar: (To be decided).

The function of the choir is to lead the Corporate Worship on Sunday Mornings. Practices are held on Thursdays at 5.10 p.m. in Music Room 2 (by the Chapel). In addition to this main duty the Choir sings regularly in the Cathedral and has frequently visited Coventry but has also been to Westminster Abbey and Truro. The Advent Carol Service at The Cathedral with their choir (televised 1969) is an annual event.

The Choir consists of mixed voices (S.A.T.B.).

If you are interested in singing in the Chapel Choir please contact Malcolm Smith /Chapel Librarian) via the Internal Letter Rack.

The Choir and Congregation are inter-denominational.

CHESS CLUB

President: G. Hatten.

The Chess Club is one of the oldest societies in the college and has one of the most outstanding records of any club. Matches are played regularly against the University (we hope to win one day) and other assorted teams in various public houses around Exeter.

Anybody who can play and mate is welcome up to County class standards—if you play better than a county class player, what are you doing coming to Saint Luke's?

Even so the Chess Club always welcomes new members, and, on behalf of the Secretary Trevor Harvey, we are looking forward to a season of even more and glorious victories than we have had this year.

CHRISTIAN UNION

Chairman: John Burdett.

Secretary: Christopher Ponder.

The aims of the Christian Union in college is threefold:

- (1) To unite all Christians in College.
- (2) To help those interested in Christianity.
- (3) To stimulate and encourage an active interest in missionary work at home and abroad.

Details of meetings will be published at the beginning of each term and delivered to all resident students.

All are welcome at our meetings and we look forward to seeing you.

C.C.T.V. SOCIETY

President: Mr. Colin King.

St. Lukes is very fortunate in having its own closed circuit television unit, which besides being used by the various departments in college, is also open to students to produce their own television programmes, through membership of the C.C.T.V. Society.

Last year, the society produced a large selection of programmes varying from, a one act play especially written for television by a member of the society, to a special sports programme on the college Rugby Club. Every week a short magazine programme is produced by the society, and is transmitted, via the C.C.T.V. system, to the students' common room.

It is hoped that next year a greater number of programmes will be produced, as by then the society's president will have returned from the United States, where he has been working in television all of this year. From correspondence received from the president it appears that he has acquired many ideas which he will be eager to try out. Consequently, more members (especially workers) are required if the society is to progress.

If you are interested in, artistic design, the technical side, script writing, or just want to learn about television production, come up to the studio in the first week of this year.



NEW LOOKS FOR LEISURE!

Sports Jackets from £5

Cord Jackets £8-19-6

Pullovers, all styles from
£2

Trousers, slim and flare
from 59/6

Your Value Clothes Store

Thomas Moore
FORE STREET · EXETER

CRICKET CLUB—Season 1971.

Captain: Pete Denning.

Secretary: Richard Stather.

Fixture Secretary: Pete Bradbury.

This season has shown some very exciting wins including one over Southampton University, who are this years U.A.U. Semi-finalists. and the first XI have won 9 other matches.

The beginning of the season was welcomed by some hot, sunny weather with all three teams very busy; in fact there has been no cancellations due to bad weather throughout the season. We hope that anyone interested in playing cricket for college will see Pete Denning during the winter so that we may arrange some nets.

CROSS COUNTRY CLUB

President: K. D. Jack, Esq.

Captain: R. Barnes.

Sec. (General): J. Griffith.

Sec. (Fixtures): T. Goodwin.

Woodbury Sec.: M. Davis.

Although small in number the club is one of the most distinguished in college and had a very successful season last year. The club finished second in the South-Western League and was the first college team. The club welcomes not only established runners but also anyone who can put one foot in front of the other, for emphasis is put upon enjoyment and competing.

The fixtures vary greatly from competition with local schools to the Hyde Park and Osterley Park relays which attract teams from colleges and universities all over the country.

Our great success of last season as far as promoting was concerned was the Woodbury relay which is the biggest event in the South-West, which was won by Borough Road College. The Woodbury will be on November 14th this year and we hope we can have your support in helping to make it a continuing success.

The progress of the coming year will perhaps depend upon the quality of the first year and the progress made by the established members. We hope, however, to maintain the very high moral and team spirit of the club, as well as improving competition results.

DEBATING SOCIETY

Secretary 1969/70: Richard Baker.

The Society was created four terms ago to prove that St. Luke's students are not indifferent or apathetic to matters outside the scope of a College of Education course. Some definitely are not, judging by the heat generated at some of our debates.

Attendances have not always been as high as the Society would like and therefore we appeal especially to the new intake this year to come along to our first meeting, which will be advertised in the Common Room, and hear the aims of the Society.

Successful debates have included the following motions:—

"This House does not welcome the Springbok Rugby Tour"

"This House would not re-elect the present Government" (speakers included two M.P.'s), plus address by local prospective M.P.'s during the General Election campaign of 1970. We have also debated the "Common Market", "God!" and "Enoch Powell"—how's that for contrast.

Please support us. There's no membership fee. We want to hear your views either from the platform or the floor!

DEVON & DARTMOOR SOCIETY

The Devon and Dartmoor, as its title suggests, is a casual and friendly hiking society. The walks are on alternate Sundays throughout the year and are held in conjunction with Rolle and St. Loye's Colleges.

The hikes, which are seldom more than eight miles in length, take place in various parts of the local area. Apart from the obvious proximity of Dartmoor and the South Devon coast it is not unknown to travel as far afield as North Devon, Cornwall, and even Dorset.

As well as straightforward Sunday hiking the society does indulge in other activities. There is an annual Charity hike, from Torquay to Exeter, which last year raised £160. Occasionally a team enters the famous Ten Tors Competition, and the society has a Y.H.A. Representative. Other events include an annual barbeque and football matches with female opposition which cause quite a stir.

Last year eight members of the society ventured to take part in a "Top to Top" sponsored race from Exeter to Exmouth; they are still recovering!

Every hike begins with a "look in at a local", where one can prepare oneself, and browse through the "Bogtrotter"—a newsheet produced for every hike.

All are welcomed on every society function. By the way, this society was once nick-named, "the walking marriage bureau!"

THE GYMNASIAC CLUB

Captain: Les Ware.

Secretary/Treasurer: Keith Page.

The club was reformed during the last winter term since there were several people from all years interested in gymnastics. Many people joined at the start but since gymnastics requires a large degree of repetition, towards the end of the year attendance dropped. The club has always appealed to, not only the beginner but also the students who find this form of exercise a pleasurable way of keeping fit. The atmosphere is very informal, and for those who might find floor and apparatus work a little strenuous, we have two trampolines. We hope that in the coming year more people, especially the ladies will attend.

HISTORICAL SOCIETY

Chairman: C. Thomas.

Publicity: S. Bowditch.

The recent year has proved to be a success for the Society, and while as yet no definite programme has been decided upon for this year, we hope that with your help the society may continue to thrive within the college.

One of our aims is to promote interest in all kinds of history—the other is to ensure that our members enjoy themselves—it is with this in mind that our meetings are held in an informal atmosphere, free coffee and biscuits for all, while later in the year at the Annual General Meeting the accent is more on the wine and cheese as opposed to coffee.

We can assure you history is not as dull as you may think.

THE HOCKEY CLUB

President: D. E. Kemp, Esq.

Vice-Presidents: The Revd. G. K. Booth ; D. L. Edgecombe, Esq. ; C. R. Tattersfield, Esq.

Club Captain: S. A. Evans.

1st XI Captain: A. C. Forbes. *1st XI Vice-Captain:* I. M. Rushin.

2nd XI Captain: P. E. J. Thwaites.

3rd XI Captain: A. Miles. *Hon. Secretary:* A. Tonkin.

Hon. Fix. Sec.: N. C. Mullinger. *Hon. Press. Sec.:* R. W. Stather.

Hon. Social Sec.: P. A. Austen. *Hon. Treasurer:* S. A. Evans.

The 1st Year Representative will be elected during the Autumn Term.

For many seasons, the Club's teams have been exceptionally strong, drawing players from Senior, Under-22 and Schoolboy sides, at International, Area and County levels.

The 1st XI have been invited once again, to attend the 1971 Folkestone International Festival; the 2nd XI will play at another Easter festival. Amongst the list of strong fixtures, the Club will play the usual University and College opponents. The 1st XI will be participating in the newly-formed Devon Cup competition, the winners of which will play in the National Club Championship.

Last season, the 1st XI won the unofficial Devon Cup Competition and won more games than any other side in the country, whilst the 2nd XI scored the second highest number of goals in the country. At Folkestone, the Club defeated arch-rivals, Loughborough Colleges; U.A.U. Champions, Newcastle University and also Cliftonville (Kent) H.C. The season's results speak for themselves:—

	Goals					
	P.	W.	D.	L.	F.	A.
1st XI	33	25	5	3	96	36
2nd XI	28	22	4	2	112	37
3rd XI	15	5	3	7	27	28
Mitres XI	7	3	1	3	7	7
Total:	83	55	13	15	242	108

It is essential to have a "pool" of at least 50 players ALL season; to field consistently strong teams, the more regular players are—the

better. Trials will be held during the first week of the Autumn term. The usual "organised" visits to local hosteleries has been a great Club tradition, it is hoped to increase the number of such important excursions during the season!

LIGHT OPERATIC SOCIETY (Rolle-Luke's)

Members of the Committee 1970-71:—

	Luke's	Rolle
<i>Chairman:</i>	Martyn Burley	Barry Farley
<i>Treasurer:</i>	Derek Griffin	Chris Leach
<i>Secretary:</i>	Bob May	Ruth Kelsall
<i>Chorus Representative:</i>	Clive Thomas	Gibby Jenkyns

This society, which works in conjunction with Rolle College, was formed four years ago and has produced four Gilbert and Sullivan Operas with tremendous success.

The aims of the society are that:

1. Anybody who can act, sing, direct, produce, or play a musical instrument should take part.
2. The society should have an integrated social life. This year this has included barn dances and similar activities.

If you feel like a good sing etc., then don't hesitate to come along. Meetings weekly. Any queries? Then contact a committee member.

MOUNTAINEERING CLUB

Chairman: D. P. Bristow, Esq.

Secretary: D. Rushworth. *Treasurer:* J. Robinson.

The Mountaineering Club was re-instated in the Summer Term 1970 and despite students being away on P.E. Camp and activities week, meets were held with favourable attendances.

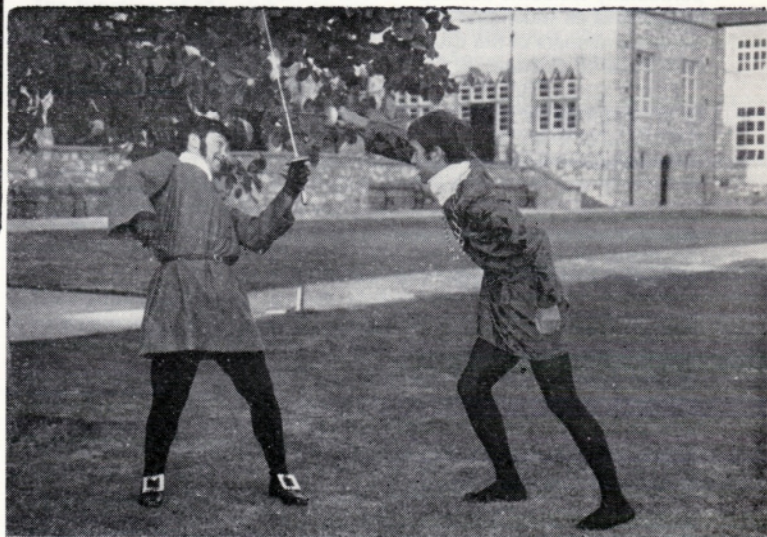
The Club has a meet in Glencoe planned for September 1970 and this will be followed by regular meets throughout the year.

We welcome all first years, experienced climbers or interested newcomers.

Because of the Glencoe meet there will be no representation of the Club in College during the first week of the term, but a newcomers meeting will be organised for the second week.



FINAL SKETCH FROM THE DRAMATIC SOCIETY REVUE
'SOCIATOR 69'



THE FIGHT SCENE FROM 'PRINCESS IDA'
LIGHT OPERATIC SOCIETY

ORIENTEERING CLUB

President: D. P. Bristow, Esq. *Vice-President:* A. G. Foot, Esq.
Captain: C. N. Southall.

Secretary and Treasurer: To be finalised.

One of the youngest College Clubs, the Orienteering Club is one of the most successful. It is generally recognised as the most successful club in the South West. Last year we won seven events with numerous second and third places. Several members ran for the South West in the Triangular International Match between the Royal Marines, Slovakia and the South West.

Although the standard of orienteering in the College is very high in some cases, there is room for everyone, from novice to expert. We particularly welcome novices—one of the advantages of orienteering is that it is an individual sport which can be taken up at any time. Several members of the Club had never done any orienteering before they came to College.

Events are normally held on Sunday mornings. We usually compete in an event every week; events range from small local events to International ones, such as the Jan Kjellstrom.

Orienteering involves two skills—running and map-reading. Of these two, the latter is the more important—if you like using maps but aren't very fit, try the sport—you will probably find it so enjoyable that you will soon become keen to get fit enough to run all the time.

RUGBY FIVES CLUB

Provisional Officers for 1970–71:

Captain: Tony Forbes. *Secretary:* Edward Poore.

Treasurer: Richard Penny.

Rugby Fives is not five-a-side Rugby, but a game played on an indoor court, usually two-a-side, each person propelling a hard whitish ball with heavily padded gloves. This game can assuage the obese, and provide as much exercise in a short space of time as any fit sportsman could want.

By courtesy of the University, we are allowed to use their two Fives courts at most times, and we had some entertaining and

instructive evenings at the end of last season. Apart from Club activities, there is the probability of some matches for the coming season.

Players of any standard, and raw beginners are all welcome.

RUGBY UNION FOOTBALL CLUB

Captain: John Pope.

Hon. Secretary: Jake Spear.

Vice-Captain: Alan Friell.

Hon. Treasurer: Dave Scott.

Assistant Secretaries: Graham Short, Peter Hudson.

Season 1969–70 was for this club one of the most successful for many years. Six sides were again fielded all with great success and each side scoring a large number of points. The 1st XV was very successful in all but three of its matches. Out of 28 games played 24 were won, 1 drawn and only 3 lost, those to Saracens, Bristol and Gloucester. Points scored for were 604 while only 203 were scored against, the club record being points for 3,064 and against 852. Perhaps the highlights of the season were the match against Loughborough Colleges and the Easter Tour of South Wales. In the former we, for the 5th year in succession beat Loughborough this time in a closely fought game, the result being 11–9. During the Welsh Tour the 1st XV had perhaps their greatest victory of the season, that over Neath, 17–14, and the tour was rounded off by a win over Llanelli 6–3. Finally the Devon Cup was retained by beating Exeter in the Final 19–3.

Looking forward to 1970–71 season the Club will again be fielding six sides and new members are asked, if they have any problems, to take them to one of the Committee, who will be only too pleased to help you in any way. Better still, keep an eye on the R.F.C. notice board near the Common Room.

Ian F. Smith, *Hon. Secretary 1969–70.*

SAILING CLUB

Commodore: J. K. Durant, Esq.

Vice-Commodore:

Captain: R. L. Peyton-Jones.

D. Bristowe, Esq.

Secretary: R. Blackadder.

Treasurer: D. Handyside.

The club exists to promote and maintain an interest in sailing and an opportunity for all sailing minded people to meet together.

If you are poor, impecunious,
 impoverished, distressed,
 destitute, penniless, broke,
 unmonied, necessitous, hard
 up, bankrupt, insolvent, or
 you just want a 10% discount
 on your sports clothing and
 equipment, go to John
 Webbers, 79-81 Queen Street,
 Exeter

Webbers—the largest sports outfitters in the West of
 England—offer a 10% discount to members of the
 St. Luke's Students' Union

There are facilities for those keener amongst us for all the year
 round sailing and racing in season at Starcross Yacht Club, and for
 instruction for beginners.

If you are keen and interested in sailing, join the Sailing Club.

SOCIAL SERVICES CLUB

President: W. O. Rice, Esq.

Chairman:

Secretary:

Visiting Sec.:

Publicity Sec.:

} Not

} Finalised

Vice-President: Rev. C. C. Prothero.

Vice-Chairman/Flying Squad Sec.:

Treasurer:

Entertainments Sec.:

St. Loyes' School Reps.: Miss A. Billingham, Miss J. Cawte.

The function of the club is to give such service to the community
 as it knows is needed and as it is able. In this work the club can
 make use of widely divergent talents ranging from those of the
 "handyman" to those of the musician and the actor.

The club runs a "Flying Squad" whose particular responsibility is
 the more practical side of the club's activity. This part of the club
 was formed to provide a working force for the old people of Exeter
 and it still performs this function although its field of operations has
 been extended of late.

The two other departments of the club which are active at the
 moment are the Entertainments and the Visiting. Both speak for
 themselves but a little elaboration may not be out of place. The
 Entertainments section of the club is concerned with organised
 entertainment both inside and outside college, catering for such
 groups as hospital patients, orphan children and old people. The
 Visiting Secretary has a list of old people who appreciate a regular
 visit from one or two students. Interesting relationships are frequently
 formed between students and the people they visit.

In short, the Social Services Club will welcome YOUR help what-
 ever your interests and however little time you have to spare. The
 club has a notice board next to the "Gents" near the Common Room
 and all the club's future projects will be posted here. Watch for an
 opportunity where YOU can help.

SQUASH RACKETS CLUB

President: Dr. P. Travers.

Captain: Chris Bridge.

Secretary: Edward Poore.

Treasurer: Tony Sykes.

Ladies Captain: Jill Parsons.

Although the College does not possess a court of its own, the Club has nevertheless managed to play a good standard within the Devon County Squash framework. The First Team, County Champions 1968-69, did not fare so well owing to a structural change in the League system, which undoubtedly affected small clubs like ours.

During the 1969-70 season, more than thirty students represented the College, both in League and Friendly matches. An efficiently run Ladies' team met with considerable success, as also did the participants in friendly "mixed" matches.

We are allowed two courts at the University on Tuesday nights, and there is also a court at Wyvern Barracks at almost constant disposal to the College. Members of the teams are very keen to coach less talented players and those wishing to take up the game from scratch.

Young People's Counselling Centre

If you are worried by any difficulty
at work, at home, with your friends, in
private life, with sexual relationships etc:—

TALK IT OVER

(Complete privacy, no fee)

Call and see a counsellor at

Wednesday evenings

6.30 — 8.30 p.m.

Tel: Exeter 73765

2 Waterbeer Street

Exeter

SUB AQUA CLUB

Possibly its underground activities have been deliberately suppressed. However, there were club evenings in the pool where the uninitiated quickly become the initiated.

SURF CLUB

This Club functions in the summer months and arranges several meetings around the resorts.

SWIMMING CLUB

The future of the Swimming Club is in the balance. During the latter part of last year the Club lost its secretary. There have been swimming fixtures and water polo matches. Fred Steele has been responsible for the water polo.

TABLE TENNIS

At the time of going to press the Table Tennis Club was experiencing certain internal difficulties. If these have been resolved it will function as it has done in the past.

Christ Maultby is the person to whom new students should address their enquiries.

TENNIS

The Tennis Club had a most successful year. Helped by winter training indoors and a bigger and better fixture list, the Club has gone from strength to strength. This reflects on the committee.

They have run three or four teams a week plus a mixed team. Ray Vernon has last year's secretary, and freshers would be wise to seek him out.

UNION OF CATHOLIC STUDENTS

Acting Organiser (May, 1970): Robert Smith.

Priest and Adviser: Father George Hay (Exeter University Chaplain). Open to all. No objection to members joining N.U.S. Works in co-operation with Exeter University section in organising talks about Church etc. Runs courses in college leading to some qualification to teach R.E. in Catholic schools. Intending newcomers to college are invited to contact Robert Smith, "Silverdale", Silver Lane, Rockbeare, Exeter, for details of college, Catholic facilities in area etc.

Aims: To increase knowledge and end misconceptions about Church (essential aid for all interested in Christian Unity and teaching balanced R.E. as well as those interested in becoming Catholics), to help its members in all ways possible and perhaps to join members of Exeter University section in helping to run the Simon Community home for wanderers in Exeter.

Present number of Catholics in college: About 50 professed Catholics at time of writing.

General reaction to formation during this (1969-70) academic year of our section of Exeter University Branch of U.C.S.: Fairly good. College authorities on whole very helpful. Few members taking advantage of talks and amenities at Catholic Chaplaincy at Exeter University.

SPORTS ACTION PICTURES



St. Luke's Hockey 1st XI v. Taunton Vale
October 1969
Peter Bradbury makes a break on the wing



Final Try, Peter Knight, Lukes v. Loughborough
Stoop Memorial Ground, 1970



Steve Bubby with the ball, Luke's v. Loughborough
Basket Ball, Exeter University Sports Hall, 1970

VOLLEYBALL CLUB

Chairman: W. R. Campbell, Esq. *Captain:* Mike James.

Vice-Captain: John Allcott. *Secretary:* Paul Canham.

Treasurer: Mike Parsley.

After a doubtful start to the year, the Volleyball Club has gone from strength to strength. We became runners-up in the Exeter League, and gained valuable experience during the London Volleyball Tour (competing against six leading London sides). The Club evening is Thursday, training in the Upper Gymnasium, 20.00 hours to 21.00 hours. All first years are very welcome.

WIND BAND SOCIETY

Committee to be elected.

The Wind Band Society, catering for a wide range of musical ability, offers for many the only opportunity they will have of playing instrumental music in college.

Above all the emphasis is on variety—music played ranging from dance and popular tunes through to the classics. The band employs a professional conductor who, over the past year, has improved the standard both of the individuals and the band as a whole.

We hope to be able to put on a concert some time during the year and the band rehearses once a week. Instrumentalist of all standards are welcome.

R.I.P. ?

The following clubs have been known to function during the past two years: Geographical Society; Judo Club; Youth Services.

BEGINNING A CLUB

If new or old students do not see a club or society that they think ought to exist, then there is a simple way that they can establish their interest.

First, they will need members—surprise, surprise. For a club to be recognised it must have fifteen paid-up members of the Students' Union.

Secondly, the club will need a constitution. This is not always a piece of red tape. A newly formed society will have aims (and methods?) These ought to be incorporated in the constitution.

A model constitution of the Nonesuch Society is available from the Union Office. Helpful advice will be given by Ian F. Smith or John Roberts on request.

Having done all this, the newly formed constituted club will have to be approved by the Student Representative Council. This is usually given. A club formed during an academic year is allocated £15.

The standard of sport at St. Luke's is extremely high. Two years ago every major club had an international or international trialist. Most of the clubs are of a County standard.

One of our main difficulties is that we are limited by the very nature of our geography. We are too far from London and the Midlands. This makes us fight even harder in maintaining our reputation.

GENERAL INFORMATION

NATIONAL BLOOD TRANSFUSION SERVICE

Twice a year the N.B.T.S. visits the College. At the last session the number of donors swelled from 150 to 202. This was due to a big increase in new donors from both St. Luke's and St. Loyes, and to the efforts of all hostel-representatives. Yet there were still quite a number of potential donors who did not come forward. If YOU are not a donor already and are interested take any questions you need answering along to: Andy Hollins, this year's Organiser or Gus Fraser, his Assistant.

If you are a donor we look forward to your continuing support. Sessions will take place, as usual, on the lower floor of South Cloisters mid November and April, and be spread over two days with morning sessions from 10-12 and afternoon sessions from 2-4. Hope to see YOU there!

ST. LUKE'S COLLEGE SICK BAY AND SURGERY

College Medical Officers:

Dr. Lamb, M.R.C.S., L.R.C.P.

Dr. Pepper, M.B., Ch.B.

Matron: Mrs. D. Butterfield, S.R.N.

All resident students should register with the College Medical Officer on arrival at College. All non-resident students residing in Exeter may do the same.

SURGERY HOURS—DAILY except Sundays.

8.30 a.m.—9.30 a.m. 10.30 a.m.—11.0 a.m. 1.30 p.m.—2.0 p.m.

Saturday: 9.0 a.m.—10.0 a.m.

The College Medical Officers have a surgery at College on Monday, Tuesday, Thursday, and Friday.

Students wishing to see the Doctor should see the Matron first and can also see the Doctor privately if they wish.

NOT-SO-TRADITIONAL MUSIC

In September 1968 a group was formed in College which was to become known as "Blueberry Jam". For the first time in its history,

the sound of heavy electric blues began to come out of St. Luke's College—much to the surprise of the City of Exeter.

As a blues band, "Blueberry Jam" played alongside such "names" as Fleetwood Mac, The Spirit of John Morgan, Keef Hartley, Graham Bond, and many others. It also had the privilege, after only four months, of backing the famous American pianist and blues singer, Champion Jack Dupree.

By the end of 1969 the group's musical direction was changing as the varied musical backgrounds of the members were put to use. Playing an almost entirely original repertoire, "Jam" represented St. Luke's College in The Melody Maker's Search contest and received very encouraging response in the national final at London's Lyceum Ballroom.

The line-up was as follows:—

Stephen Dodd (Drama, French): lead, slide, and Hawaiian guitars and vocals. He spent four years in Wells Cathedral Choir and was trained as a violinist. He plans to electrify his violin in future so as not to waste this training. He also wrote most of the songs that were featured by "Blueberry Jam".

Martin Farmer (Geography, Prim./Sec.): Piano, tenor and descant recorders, vocals. He had some training on the clarinet, but preferred to forget it. He also wrote several of the songs featured on stage.

Robin Lumley (Art and Craft, English): Drums. Although trained as a classical pianist, this unpredictable character provided the "skin-bashing". The last anyone heard of him he was blowing up some houses in Plymouth.

Donald Prouse (Electrician): Bass guitar. He was specially imported by fellow-Londoner Steve Dodd to play bass and developed a reliable and inventive rhythm section with the drummer.

However, as two members leave College, the group is splitting up (June 1970). But, with another year to do, Steve Dodd has assembled a new line-up—"Gas Hatchet". . . . This will feature ex-Luke's Gus Stuart on trombone, cornet and recorders.

"Blueberry Jam" wish to thank all those who supported the group during its existence, and especially at the heat and final of "Search". They also wish to apologise to the Principal for the "soul-shattering thud" that he complained of when in its first few weeks, the group practiced in Room 17.

Meanwhile your support in the future would be welcomed by "Gas Hatchet", from whom we can expect some interesting music.

POST-GRADUATES

Post-Graduate Rep., S.R.C., 1969-70: The Rev. P. R. Turner.

The Post-Graduate Department at St. Luke's has, over the past few years, been slowly and quietly expanding. The 1970-71 course is to move into a new home for the Post-Graduates, in Nancherrow, just across the road from the College Road entrance to the College.

Because those on the course are only at St. Luke's for one year, it is not always easy to gain any corporate feeling of really belonging to the College, and if any is developed, suddenly everybody departs for Teaching Practice, or whatever, and the feeling goes. This will not be helped now by the physical separation of Nancherrow from the rest of the College.

Any Post-Graduate course has within it a wealth of talent and experience which could be tremendously valuable to the College as a whole, and I do hope that all new Post-Graduates will make a real effort to involve themselves in College life. There is one Post-Graduate Representative to be elected on to the Student Representative Council, and here at once there is the basis for a useful link.

The Students' Union itself, and membership of it, is of course the main way in which Post-Graduates can be seen to be part of the College. I hope that all those on the course will join the Students' Union and play an active part in its affairs. The experience of many of the Post-Graduates in 1969-70 has been of enjoyable participation in the community life of the College, coupled with an interesting and stimulating academic course. Let us hope that this may be the case in years to come.

Shaul Bakery

For High Class Continental
Confectionery

Oven Fresh Bread and Rolls

Pies, Pasties and Sausage
Rolls, etc.

Branches at:

**SOUTH LAWN TERRACE, HEAVITREE,
EXETER**

**COLSONS OF EXETER, HIGH ST., EXETER
22 SIDWELL STREET, EXETER**

BOONS, 46 NORTH STREET, EXETER

THE SIMON COMMUNITY

"Once a man is down, it is hard to get up. The typical Skid-Row man shuffles around, with no friends, few contacts, and nothing but the dirty clothes he stands in, and a pocketful of fag ends. Perhaps he's around 45, was drinking heavily in the army; sometime was married, and has kids, but the sons and daughters don't want to know him now. He's sleeping rough because he can't get lodgings because he can't get a job, and he can't get a job because he is filthy and tired from sleeping rough. It's a vicious circle."

This short account gives some idea of the problem faced by the down and out. At the present time there is a moving population of about 100,000 vagrants; homeless, often jobless and with little more than the meths bottle for comfort. In Exeter, along with several other towns in the country, a hostel known as the Simon Community has been set up, in an attempt to take some of the dread out of the vagrants life and offer a chance for reform. The Exeter Simon Community is run to a very large extent by students, who stay on a full time basis for about a year. However, the pressure of work is very high and students from St. Luke's are urgently needed to give an evening or even a whole night to help at the community; jobs vary from talking to down and outs to night duty.

So if you want to help alleviate a desperate problem, call in at the Simon Community, Gabriels Wharf. (At the time of writing there is an eviction order from Exeter City Council on Gabriels Wharf. The problem remains.)

Stephen de Brett.

LODGINGS OFFICER AND WOMENS WELFARE

Mrs. Denny is a most hardworking women who attempts to combine two jobs for the price of one. That she succeeds is to her credit!

Students requiring lists of flats or houses would be wise to contact her and talk over the problems involved before settling on anything.

Any woman with a social problem will find Mrs. Denny the ideal person to ask for help. She has a wide experience in welfare work.

In both instances it might help if students could make appointments to see her. Her office is in North Cloisters, at the Theatre end of the corridor.

NON RESIDENT STUDENTS

The rapid expansion of the College over the past few years has caused considerable problems and difficulties. The bulk of students are Non-resident. Nevertheless the College has duties and obligations to these students, and by being non-resident or by choosing to become non-resident the students continue to have their responsibilities towards the College beyond immediate academic commitments. For instance, the non-resident student must be meticulous in giving notice of absence from lectures or absence from Exeter, etc.

TUTOR FOR NON-RESIDENT STUDENTS

All students have a Personal Tutor with whom they should be regularly in touch and with whom they can take up any problems both of an academic and personal nature. The Tutor for Non-Resident Students is involved with problems affecting all our large numbers of non-resident students, for instance legal problems, and those of noise, etc.

The Tutor for Non-Resident Students is R. J. Godfrey, Esq., who can be contacted in College (59384) or out of lecture hours at 29, Broadfields Road, Exeter (56879). In emergencies the College Warden (59385) may also be contacted.

UNION OFFICE/STATIONERY SHOP:

Permanent Secretary: Mrs. J. Mitchell.

Stationery Shop Assistant: Mrs. P. Long.

Weekdays 9.00 a.m.—2.30 p.m.

COFFEE BAR:

Weekdays 10.00 a.m.—2 p.m.

COLLEGE BAR:

Mon., Tues., Thurs., Fri. 11.30 a.m.—2 p.m., 7.30 p.m.—
10.30 p.m.

Wednesday, Saturday 4.30 p.m.—10.30 p.m.

Sunday 12 noon—12.50 p.m.

LIBRARY:

Librarian: Mrs. W. M. Molland, M.A.

Weekdays 9.00 a.m.—10 p.m.
(Tuesdays 9.30 a.m.—10 p.m.)

Saturday 9.00 a.m.—12 noon.

CITY LIBRARY:

Membership available to students upon signature of Personal Tutor.

Lending Library—Reference Library

Weekdays 10.00 a.m.—8.00 p.m.

Wednesday 10.00 a.m.—6.00 p.m.

Saturday 9.30 a.m.—6.00 p.m.

(Institute Library, Gandy Street, also available to Students.)

FORREST CAR-HIRE

10% discount to all Students with Union Cards.

Telephone No.: 77077.

TELEPHONE NUMBERS:

Student Union Office	78939
College Office	59384
Resident Warden	59385
Matron	59388
British Rail	77277
Bus Station	56231
Pitts Bookshop	73181
Exetax Ltd.	74942
B.R.S.	71224
University	77911
Rolle J.C.R.	952/4945
St. Loyes	73555
R.O.E.	77054

POSTAL:

G.P.O. Main Office, Bedford Street.

Weekdays 9.00 a.m.—5.30 p.m.

Saturdays 9.00 a.m.—4.30 p.m.

First Post reaches College at 8.15 a.m.; second post at 12.00 noon.
(Mail is distributed via letter rack.) Parcels, telegrams and registered mail are handled by the College office.

Heavitree Road collections:

8.45 a.m.

12.15 p.m.

3.15 p.m.

6.15 p.m.

(Sunday—one collection only 5.45 p.m.).

TELEVISION FACILITIES

General—Common Room.

Hostel—T.V. Sets.

IMPORTANT DATES

September:

- 11-13 Colleges of Education Conference, Madeley.
- 19-20 Treasurers Conference, Borough Road Polytechnic.
Schools' Liaison Conference, Bangor University.
- 21 AUTUMN TERM BEGINS.
- 26 Coming Up Ball.
One Day Conference on Grants, London.
- 29 Council Meeting.

October:

- 1 College Committee.
- 3 Academic Board.
- 17 One Day Conference on R.E. in Schools, London.
- 27 Council Meeting.
- 29 College Committee.
- 31 Academic Board.

November:

- 12-13 Blood Doning Sessions.
- 20-23 N.U.S. Conference, Margate.
- 24 Council Meeting.
- 26 College Committee.
- 28 Academic Board.

December:

- 6 Christmas Carol Service.
- 7 Third Year T.P. visit.
- 11 END OF TERM.
- 19 Cardiff v. St. Luke's College R.F.C.
- 29-3 Drama Festival, Southampton.

1971

January:

- 4 SPRING TERM BEGINS.
- 8 Third Year T.P. visit.
- 9 Academic Board.
- 25 T.P. Commences.

February:

- 6 Academic Board.
- 20 LOUGHBOROUGH.

March:

- 6 Academic Board.
- 19 T.P. Finishes.
- 22 First Year T.P. visit
- 26 TERM ENDS.

April:

- 2-5 N.U.S. Conference, Lancaster.
- 14 SUMMER TERM BEGINS.
- 24 Academic Board.
- 29-30 Blood Doning Sessions.
- 29 Student Journalist Conference.

May:

- 3-28 First Year T.P.
- 22 Academic Board.
- 24-28 Fourth Year B.Ed. Papers.
- 29-1 Holiday.
Devon Show, Exeter.

June:

- 2-11 Second Year, P.E. Camp.
- 7-11 Third Year B.Ed. Papers.
- 21-29 First Year P.E. Camp.
- 29 TERM ENDS.

COUNCIL ADDRESSES

For the first time ever, the President has decided to live out of College. In the past he has resided in Highton.

His Exeter address is:

19 Waverley Avenue, Exeter.

The Vice-Presidents live quite close to College. Frank Sobey in Mount Radford Hostel and Peter Pascoe is obtainable at 51 Radford Road, Exeter.

Students wanting help are welcome at any time.

COLLEGES AND UNIVERSITIES IN THE EXETER AREA

Exeter University

Catering for over three thousand students, the University has a well laid out campus including the Northcott Theatre, the Sports Hall and the students' own Union buildings, Devonshire House.

In the past there has been little in the way of reciprocal relations. This year the University President is Brian Landers. Already informal talks have taken place and it does seem likely as though there will be co-operation on essential student matters. In Exeter, which tends to be conservative, this would be quite a radical step—elsewhere it would pass unnoticed.

Students can become readers in the University Library. They can become full members of the Institute Library in Gandy Street. Card carrying Bachelor of Education students are permitted access to the Sports Hall.

Rolle College of Education, Exmouth

At one time considered as our sister college, Rolle has now become a co-educational institution. There is still a ratio of about five women to every man.

Rolle comes under the local educational authorities and does not have the independence that can be found in a voluntary college of education. Its campus is very new by contrast to others.

In the past we have shared our social calendar, but recently Rolle have been limited in the number of dances they can hold. This has caused some ill feeling amongst the students there.

Their students' union is getting stronger, but it is hampered by internal conflicts. They have run a most successful Rag.

It is our hope that this college might co-operate far more than it has done with Rolle, so that the freedom and facilities that we enjoy might also be enjoyed by their students' union.

Exeter Technical College

The technical College figured nationally when it was announced that in the comprehensive plans of the City, this would become a Sixth Form College. Previously it had served as a technical college catering for the "A" level and the "O.N.C." student.

Exeter serves a very large hinterland. The College is utilised from 9 a.m. to 10 p.m. and the floating student population is probably in the region of two or three thousand.

As a Sixth Form College, we will become more involved with it, particularly as we are toying with the idea of a sixth form conference at St. Luke's College.

St. Loyes College of Occupational Therapists

How is it that nurses remain worse off than teachers? In almost every aspect, St. Loyes student nurses have to comply with out of date rules that could not possibly be asked of a normal student. It may be that we will be able to assist in the enlightenment of a more liberal regime.

If a joint working party could look into the facilities offered by the various educational bodies in Exeter, the results might prove very interesting.

NATIONAL UNION OF TEACHERS

College Correspondents: Malcolm Harrison, Adrian Beaumont

For two years the N.U.T. has written about the services and benefits provided by the largest professional organisation in Europe. Shortly, you will receive details of these services, but, as the progress of education and the well being of the teacher is so much affected by the N.U.T. we will talk about its policies.

Of the eight teachers organisations that exist, the N.U.T. is by far the largest and the only one to cater for all aspects of education—from nursery schools to Universities. The N.U.T. has always strove for one union. Surely this is the only way to achieve better salaries, conditions and consequently education.

250 words are not many to describe an organisation such as the N.U.T. Its big; it has sections for all aspects of education; it has militants; it has pacifists; its non political; its the most influential voice in education, and it produces a weekly newspaper—“*The Teacher*”.

During the first fortnight of term a representative of the N.U.T. will call on you to talk more fully about the Union's policy on salaries, comprehensive education, teacher training, and numerous other aspects of education. Feel free to ask these representatives any questions—awkward ones are particularly welcome.

Malcolm Harrison and Adrian Beaumont are your College representatives this year, and are always willing to talk about education of the N.U.T.

Each hostel has a rep. who, will wear a N.U.T. badge. Day students can obtain information via the letter rack, or from our noticeboard, or from a day student representative.

NATIONAL ASSOCIATION OF SCHOOLMASTERS

To discourse fully on the aims of the N.A.S. in a book of this nature would be out of place. However, a few points regarding the organisation of the Association in this College may be mentioned here. We try to acquaint the student with the realities of the teaching profession, of which he will soon be part, and to give any assistance possible during the training period. There is a system of hostel representatives in College, and non-resident students are also well catered for. The Association noticeboard is situated outside the Bar in Cloisters. The facilities provided by the N.A.S. are available to all student members, and the Association's journal, “*The New Schoolmaster*”, is distributed every month.

By joining us in the N.A.S. you will be helping to secure your future career as a schoolmaster.

SAINT LUKE'S CLUB

All ex-students are eligible for membership of the Club, the objects of which are:—

1. To promote friendly and social intercourse among its members.
2. To maintain the status of St. Luke's College.
3. To give opportunities for mutual assistance.

Each year a YEAR BOOK is sent to every member, giving news of the College and of past Students. Very many members return for our ANNUAL RE-UNION at College on Spring Bank Holiday Monday.

ANNUAL SUBSCRIPTION 5/—.

Further details can be obtained from:—

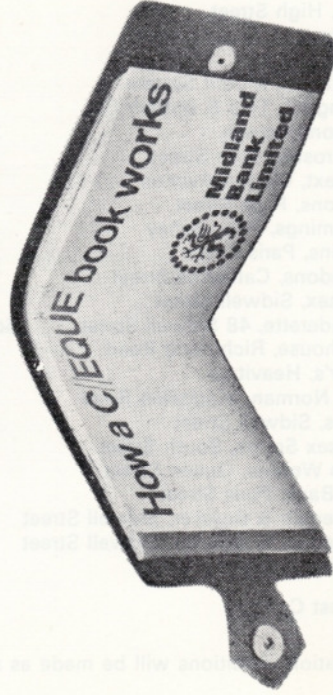
THE GENERAL SECRETARY,

Mr. A. T. Robinson,

415 Topsham Road,

EXETER.

**You're going
to be a student.
You're going
to need a bank
account.
And this is going
to tell you all
about it.**



When you go to College you'll need somewhere to put your grant cheque.

And somewhere to take it from. Like a free, no-charges-to-full-time-students bank account — so long as you don't overdraw.

And so you don't have to waste your precious time talking to people about the ins and outs of one, we've got a special cheque-book-type booklet

called 'How a C/EQUE book works'. It'll tell you everything you want to know.

And you can get one when you open an account at your local Midland branch. You will find the address in the 'phone book.



Midland Bank

CONCESSIONS AVAILABLE TO N.U.S. MEMBERS IN EXETER

<i>Outfitters</i>	Alkit, High Street	10%
	J. Conway, South Street	10%
<i>Motoring</i>	Elliscars (L)	10%
	C. Marratt, Mount Square	10%
	Hillingdon Tyre & Battery Co.	Various
	Gaytons Garage	2d/gall.
<i>Electrics</i>	Electrosure, Fore Street	10%
	A. Hext, Clinton Avenue	10%
	Waltons, High Street	10%
<i>Leather</i>	Cummings, Princesshay	10%
<i>Jewellers</i>	Wilkins, Paris Street	10%
<i>Florist</i>	Laundons, Catherine Street	10%
<i>Cleaners</i>	Wessex, Sidwell Street	10%
	Laundrette, 48 Sidwell Street	6d in 2/-
<i>Shoe Repairs</i>	Parkhouse, Richmond Road	10%
	Peter's, Heavitree	5%
<i>Wines, etc.</i>	J. J. Norman, Magdalen Road	10%
<i>Camping and Sports</i>	Grays, Sidwell Street	10%
	Wessex Sports, South Street	10%
	John Webber, Queen Street	10%
<i>Records</i>	Left Bank, Paris Street	10%
<i>Carpets</i>	Stoneman & Bowker, Sidwell Street	10%
<i>Furniture</i>	Stoneman & Bowker, Sidwell Street	7½%
<i>Photographic</i>	Austins, Cathedral Close	10%
	Forrest Car Hire	10%

This list is subject to alteration. Additions will be made as soon as available.

N.U.S. cards have to be produced at time of purchase.

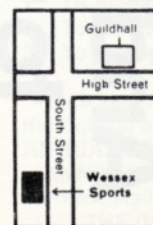
The right equipment for you is at Wessex Sports

Good equipment, exactly right for you, is essential for any sporting activity.

At Wessex Sports you can draw on expert advice and experience and then choose from a comprehensive range of the very best equipment.

Whatever your sport, you'll find the best equipment for it at Wessex and knowledgeable people ready to help you.

Wessex Sports is just three minutes walk from the Guildhall.



WESSEX SPORTS

82-83 South Street, Exeter. Tel : 79655/6