

**SAINT
LUKE'S
COLLEGE**

**STUDENTS'
UNION
HANDBOOK
1968-1969**



KENJO DRYCLEANING

Open 9.45 a.m. — 6 p.m.
Evenings 7 p.m. — 9.30 p.m.

Monday — Saturday
Monday — Friday

Approximately 8 lb. load 10/-
or Single Garments 2/6 each

available at:

KENJO WASHETERIA

145 SIDWELL STREET

Wash 12 lb load 2/-
7 minute Cycle Tumbler Drying 6d.
24 HOUR SERVICE

also

KENJO WASHETERIA

48 SIDWELL STREET (Opposite)

Open:

8 a.m. — 9 p.m. (last wash) 9 a.m. — 9 p.m. (last wash)
MONDAY — SATURDAY SUNDAYS



It costs you nothing to make a friend at Barclays

Look in at your nearest branch, and ask to see the manager. You'll find he has plenty of experience in the vagaries of student finance. He'll help you to open your account, and give you any advice you may need on how to run it . . .

He'll ask you for a couple of specimen signatures and a quid or two. Then, providing you stay in credit, your 'Student Account' will be free of all banking charges. And you'll have made a good friend for the rest of your student days.



Barclays Bank

Money is our business

ASSISTANT MASTERS ASSOCIATION

Over 29,000 members

**Membership of the Association is open to
MASTERS teaching in all types of
SECONDARY SCHOOLS**

The Association is represented on the Burnham
Committee and on all important Educational Bodies

**TEACHERS IN TRAINING should join as
STUDENT MEMBERS**

and so obtain

advice on any professional matter
confidential information about schools the
Association's teaching memoranda at reduced rates
special terms for insurance and house purchase

For full particulars write to:—

**THE SECRETARY, A.M.A.
29 GORDON SQUARE, LONDON, W.C.1**

A . A . M .

The Association of Assistant Mistresses

one of the

Joint Four Secondary Teachers' Association

INVITES

WOMEN TEACHERS

in secondary schools

STUDENTS

training for secondary school work

TO JOIN THE A.A.M.

A is represented on all major
national and international bodies

A negotiates salary scales on
the Burnham Committee

M offers professional advice and
legal protection to members

WHY DELAY? JOIN NOW

Write for further details of the A.A.M. to:—

**THE SECRETARY, A.A.M.
29 GORDON SQUARE, LONDON, W.C.1**

students' handbook

contents

From the Principal	5
Saint Luke's College	5
Map of College Hostels	10
Resident Students	11
Hostels	11
Rules for Resident Students	14
Daily Routine	15
Map of College grounds	21
From the President of the Students' Union	23
New College buildings—South Cloisters	24
Students' Union	25
Sub-Committees of Council	29
College 1968-9	31
Clubs and Societies	34
Local amenities	53
General Information	54



ST. LUKE'S 1968/69

*We know a lot
about a little.*

After dealing with money as long as we have, you can't help but know a lot about all sorts of money problems. Big and small.

We understand the difficulties in eking out a grant. Just living and eating regularly is hard enough. Not to mention when you want to buy books or clothes. Have a drink or a smoke.

We've been thinking about these problems for a long time.

Come in and see if we can help you.

NATIONAL PROVINCIAL BANK

Bankers to St. Luke's College. Branches in Exeter at:
59/60 High Street, 65 High Street, 3 Paris Street, 1 Alphington Street,
Heavitree Road and Whipton.

From the Principal: J. L. Smeall, Esq.

The College opened in September 1968 with over twelve hundred students. About half of them are non-resident, and the other half live in nine separate residential units. They all converge daily on the main campus, which at 9 a.m. looks like Victoria Station at rush hour.

As a consequence, communications are difficult and must be carefully organised. This handbook is a most valuable provider of information. The academic staff has developed an almost perfect system for briefing students about courses, timetables, teaching practice, final examinations and methods of finding jobs. The system is based on the assumption that ears will hear and eyes will see. Students are advised to justify this assumption.

No system can provide for all contingencies, and students will inevitably have problems which need a second or third opinion. I visited an American university which has a highly complex Counselling system. If a student at that university contemplates suicide he has only to consult a grade-three counsellor who will, if necessary, arrange for him to see a grade-two counsellor. By the time he has

an appointment with a grade-one counsellor the attraction of suicide will either have proved irresistible or vanished. Here there is no such system, but there is a generous provision of sundry persons ready and able to help. Most fellow students are kindly and quite a number of them are sensible. The Students' Council is a very shrewd, competent and sympathetic body which is ready to help with the problems of individuals as well as of the student body as a whole.

Each student has a personal tutor and most students get to know

a subject tutor well. Resident students have a hostel tutor and another tutor takes a special interest in non-resident students. These members of the academic staff are always willing to be consulted about other than purely academic matters. The Chaplain is resident and available for consultation at most hours of the day and night. Students will soon realise how helpful the Matron and Assistant Matron are. The College Doctors call most days of the week and wish it to be known that they are willing to be consulted by students on the most confidential matters; an appointment may be made in confidence through the Matron or any tutor.

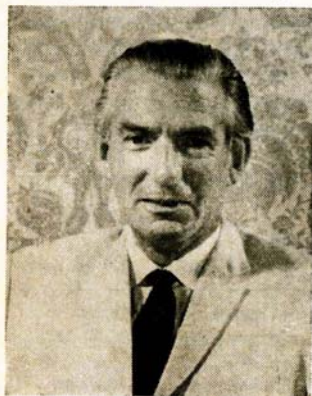
Finally I regard it as one of my most important privileges and duties as Principal to be about the College most of the day and to see people in my study without appointment.

I hope that students will accept Saint Luke's College as a large community, but regard it as one in which most people are friendly, sympathetic and sensitive.

SAINT LUKE'S COLLEGE

Saint Luke's College is the oldest of the Church's Colleges of Education. The first four students came into residence in 1840 in a house in the Cathedral Close in Exeter, to be "trained primarily as men, Christians and churchmen, and secondarily as Masters". The pioneers of education in Exeter, who helped to found Saint Luke's College were the Bishop, Rt. Revd. Henry Phillpotts, Sir Thomas Dyke Acland, the Revd. Chancellor C. H. Harington and Mrs. Charlotte Hipplesey-Tuckfield.

Life in the early days was austere. The students rose at 6 a.m., attended several daily services in the Cathedral, and were not allowed out of the College except for organised walks. The students were warned that they were about to enter "a life of austerity mainly in the service of the poor". The "Occupations of the Day" notice emphasised the warning; and in the early Prospectus students were termed "inmates" with or without intent to depress. Austerity was a matter of policy, not of necessity.



In 1854, the College moved to its present site, when the Cloisters Block was built. This new building, opened with great solemnity, was sufficient to house, feed and instruct some 60 students. A Chapel was part of the original plans, but it was not actually built until 1863.

Shortly after the opening of the new building on Saint Luke's Day, 1854, the College began to be known unofficially but generally as Saint Luke's College. The name was officially adopted in 1929.

The first Principal, appointed in 1839, had been a young man of 24, the Revd. George Martin; the second the Revd. William David, appointed when only 22. Then in 1869, came the Revd. Dr. J. G. Dangar. One of his first jobs was to build a Practising School in the College grounds in 1873. For many years most of the teaching practice of the students was done here.

The Saint Luke's Club of old students was formed in 1878. To signalise their formation they presented an organ to the College Chapel. The College soon became famous for choral singing.

Although in the early days of Dr. Dangar it was difficult to get recruits, by the end of his regime (1906) students clamoured to be admitted. Not until his last year was a Recreation Room built for use by students.

Apart from minor extensions, there was little expansion until the Magdalen Road field was purchased in 1894. Twelve years later Annexe was built.

The days immediately before the first World War were important ones in the history of the College. The Government began to exercise a close control over teacher-training. It fixed the number of students, the age of entrance, the length of the course and the standard of the final examination. In return for these restrictions substantial grants would be paid to the College which had to agree to accept a percentage of students without regard to their religious denomination. At the time this gave rise to anxiety, but experience has proved that

the presence of Free Churchmen has enriched the religious and social life of the College. During this time the College was considerably enlarged. Under the direction of the Principal, Revd. R. H. Couchman, the whole tone of the College was raised. All College sports were put on a firm footing.

The College was "occupied" by the Army Pay Corps during the first World War, and re-opened in 1919 under Prebendary R. L. Collins. In 1920 the College acquired Holnicote, and later the private house now known as Staff House. This gave the college the complete "island" space it occupies today.

In the meantime the character of the College was changing. An increasing number of students remained for a third year to take a Final degree, in 1927 over 30 students were reading for external degrees of London University. A Faculty of Theology had been created in 1928, and the first student trained in this new department was ordained in 1931.

The Highton Block was commenced in 1933, at the same time that the Practising School was enlarged. Highton was completed in 1938. Club Alley had been restored and enlarged by the old student's Club in 1930. Immediately prior to World War II few Colleges could compare with Saint Luke's in buildings and amenities.

The College continued to function during the war, until May 1942, when explosive and incendiary bombs almost completely destroyed the College buildings. Fortunately none of the 130 people resident in the College were seriously injured. The students went to St. Paul's College, Cheltenham.

The College opened again in October, 1945, with a new Principal, James L. Smeall, Esq., J.P. The site of Baring Villas had been purchased and Baring Court was erected. A house adjacent to the College, Nancherrow, was bought for use as an hostel. Later came Rowancroft House, Clystlands and Belfield. The College reopened with 78 men, mostly housed in lodgings until the hostels were ready. The work of rebuilding went on, the Swimming Bath was recon-

structed, the Chapel reopened in 1953, the Theatre soon after. The old Practising School could not expand unless it moved, so it was housed in new buildings two miles away at the Vincent Thompson School. The School buildings provided the College with a library, lecture rooms and a permanent Dining Hall.

In 1962, new residential blocks were built at Rowancroft, and new gymnasias and a Science Block in the main College area. The rooms made available enabled a new Library to be constructed and a range of Student Common Rooms. In 1967, a spacious new Dining Hall and a large block of study bedrooms completed the College quadrangle. The old Dining Hall area provides accommodation for the Student Union.

Academically the College has prospered. For professional purposes the College is linked with the Training Department of Exeter University, Rolle College and Dartington, in the Institute of Education of the University. The social life of the College is in many ways like that of an Oxbridge College, and a flourishing Student Council handles most of student social affairs, and influences all other spheres of College life. The College is well known in the world of Arts and Drama. The Chapel Choir regularly sings in Cathedrals and Westminster Abbey. The standard of games is very high indeed. Many students have had international trials, whilst at College. In most games the College rather more than holds its own with provincial universities, while the College rugby is known internationally.

Some of the present students will be taking the new degree of B.Ed. at the end of this year. A very high standard is now required of prospective entrants.

In 1840, the College opened with one staff and four students. Now in 1968 there are over 100 staff and over 1,200 students of both sexes. An "outpost" is now open at Camborne in Cornwall, where fifty local "mature" students are in training. The College still attempts to remain true in spirit to the founders' intentions that students shall be trained primarily as men (and women^o) and Christians and secondarily as masters (and mistresses^o).

SAINT LUKE'S TODAY

In most respects Luke's today is a progressive college. Numbers have now topped a thousand, providing an abundant source of experience and knowledge from which every academic department and student organisation can draw help and support.

The Arts, Science, Education and Physical Education quarters are all looking ahead and expanding as numbers increase each year, and this contributes to the overall progress of the college.

Clubs and Societies thrive because there is this vast wealth of talent, not necessarily in the P.E. Department, from which to draw members. Combined with efficient organisation, and the cultivation of far-seeking ambitious ideas, college life is dominated by the clubs and societies, and social life orientates around them.

Yet what is really striking is the maintenance of tradition alongside this progress. Although a good deal of abuse is directed at our tradition by students, the general reluctance to accept women students demonstrates some underlying desire to cling to it. Again it is a good deal of this tradition by which Luke's is recognised as an essential part of Exeter's community.

St. Luke's today caters for a wide range of ability and interest, and it draws its students from all walks of life, and all corners of the British Isles. The great variety of accent to be heard in any part of the college bounds illustrates our international catchment area.

St. Luke's also caters for young and old alike, and thirty-eight years separate the oldest student from the youngest. But whether a student can boast thirty years' service in the Royal Marines, or three "A" levels from school last year, he is still an integral part of the college community.

The oldest mature student can boast that he goes to St. Luke's because he can feel he belongs to that student community. It is perhaps this which is most important for the student at St. Luke's today.

We Don't Crib

We Only Copy LETTERS, MAPS, DIPLOMAS,
REFERENCES, CERTIFICATES

And Sell RAPIDOGRAPH AND GRAPHOS DRAWING PENS
'UNO' STENCILS, LETRASET, COW GUM, SKETCH PADS, FIELD
BOOKS, GRAPH PAPER, SLIDE RULES, DRAWING BOARDS, TEE SQUARES,
BRUSHES, PALETTES, OIL, POSTERS, CRYLA, POLYMER, P.V.A. AND WATER COLOURS

Exeter Photocopying Ltd.

45 NORTH STREET, EXETER 'PHONE 73880

COLLEGE CHAPEL

"Not quite what you would expect" is the best way of describing Saint Luke's Chapel. It is not the meeting place of the pious few but a centre for a large and growing number of staff and students. It is not just used on Sundays—it's open and used every day. All types of Christians are welcome (others as well) and they play a part in chapel affairs. Music plays a part, of course, and we have a good choir—new members are welcome, if they can sing and if they can't, we can always find them something else to do.

Every year new members enter into full membership of the Church through Confirmation. The Bishop of Crediton will confirm in the chapel on Whitsunday. Preparations for confirmation begins soon after the new students arrive. The Chaplain is the person to see about it.

All students should receive a copy of the chapel calendar, if you did not get one, there are some spares at the back of the chapel. This tells you the times of all the services, who is preaching on which day and other things as well.

Another publication from the chapel is the Donkey—sometimes known as the Chaplain's Ass. This is published weekly, is free, and can be obtained at the College Communion at 9.45 a.m. on Sundays or at the back of the chapel during the week.

The Chaplain tries to visit all new resident students, this takes time and as the College grows in size so does the difficulty of personal visits. You can help reduce the size of the task by making yourself known to the Chaplain, without waiting for a visit.

Worship is our main concern and the centre of our worship is the College Communion at 9.45 a.m. on Sundays. We try to care for and to get to know the people in College, hence the visits and we have a concern for others. Last year we built a church in an African Village. This year we have almost provided the first teacher for that village. And next year? Well that depends, in part, on you. We hope that you will play your part, not only in caring for others but in chapel life as well.

YOUR MOTOR INSURANCE

You can get lower premiums!

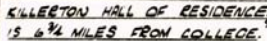
As a student, you will find that some insurance companies tend to be severe with what are called premium loadings. Luckily, your INCORPORATED Insurance Broker knows which insurers treat students more leniently. And it cost no more to insure through him. You get free, independent advice and the certainty that the company he recommends is perfectly sound. Call in for a chat—without obligation of course.

RK Shipman & Son Ltd
INCORPORATED INSURANCE BROKERS
(Founded 1935)

12 CASTLE STREET, EXETER 54560/74037

34 ROLLE STREET, EXMOUTH 5158

HOSTELS.



TO CLYST ST MARY'S MIDDLE CAT & DOG ARE NEAR CLYST ST MARY.

TO ENROUTE
40 MILES

Saint Luke's
College Playing Fields

GRINDLE BROOK

RESIDENT STUDENTS

The student population of the College consists of about 1,200, of which 480 are resident in Wings of the College, Hostels or Hall of Residence.

The Principal delegates the domestic supervision of these resident students to the Warden of Resident Students and the Bursar. The Warden acts as chairman of the ten Resident Tutors. Each hostel has student Proctors who assist the Resident Tutors in the Welfare of the students of that hostel. These Proctors are selected by the Principal and Resident Tutors and must not be confused with members of the Student Council, elected by students, who are concerned with the social life of the College on a much broader basis than the hostels. Both Proctors and Student Council work together in the general interest of all members of the College.

SOUTH CLOISTERS (Main College area)

Resident Tutor: Revd. F. W. T. Fuller, Warden of Resident Students. Telephone 59385.

Proctors: M. J. Carter, B. S. Casson, J. B. D. Osborne, D. J. Roberts, A. Slade, A. Townley.

Hostel telephones: First Floor: 73382. Second Floor: 72757. Number of Students: 85.

South Cloisters is the newest block of study bedrooms, built in 1967, on two sides of the Cloister Garth. When the College opened on its present site in 1854, all the resident students were housed in Old Cloisters, now Staff Studies. These Old Cloisters were occupied by students throughout the period 1854-1967. The students of the new South Cloisters hope to continue some of the traditions of Old Cloisters. This new block contains ample kitchens, laundries and utility rooms. It has the largest number of students of any hostel or hall of residence.

HAIGHTON (Main College area)

Resident Tutor: A. T. Hodgson, Esq.

Proctors: R. A. Baldwin, D. G. Wilce. *Hostel Telephone:* 74647.

Number of Students: 40.

Highton Hostel was built in 1933, with enlargements in 1936 and 1938. It is named after W. P. Highton Chappel, who when he died in 1928 left the College £10,000 for new buildings and other purposes. Originally the building contained the Gymnasium and the Science Laboratories. In 1962 it was adapted to take the College Library and a new range of Student Common Rooms including a licensed Bar. These latter have now become lecture rooms and a Library extension.

BARING COURT (Main College area)

Resident Tutor: C. F. King, Esq.

Proctors: M. K. Swain, B. L. Thomas, A. P. White.

Hostel Telephone: 71836. *Number of Students:* 56.

Baring Court is a range of "semi-permanent temporary" buildings, which were constructed in 1948 to house students while most of the rest of the College was still roofless from war damage. The hostel was opened by the Bishop of Bristol, who had taken a great interest in the College when Secretary of the Church Training Colleges Council. Baring Court is built on the site of Baring (or Saint Luke's) Lodge or Villa, once the Principal's house, which was totally destroyed in 1942.

ROWANCROFT HOUSE, Fore Street, Livery Dole.

Resident Tutor: F. G. Smith, Esq. *Telephone:* :59883.

Proctors: S. A. Body, B. D. Cudmore.

Hostel Telephone: 58046. *Number of Students:* 31.

Rowancroft House, next door to Clystlands Hostel, is a large Regency type dwelling erected in the early 1830's, on land which

had originally belonged to the banker, Sir Thomas Baring. In the latter part of the 19th century it was known as Stafford Lodge, and was the home of Sir Stafford Green. Towards the end of the century it became the home of Miss Mary Chambers-Hodgetts. She had set up a school for boys wishing to qualify for theological colleges prior to training for ordination, and left the house as such to the Diocese of Exeter. Education Acts made such schools redundant and impracticable.

During the war it was occupied by the A.T.S. The house was rented by the College in 1945, and in 1954, by a High Court Judgement on Miss Chambers-Hodgetts' complicated will, the College acquired the house and grounds, with a proviso, still maintained, that the house shall only be occupied by communicant members of the Church of England. The neglected grounds were cleared up, and tennis courts and a hockey pitch laid down.

ROWANCROFT COURT, Fore Street, Livery Dole.

Resident Tutor: W. O. Rice, Esq. Deputy Warden *Telephone:* 54079.
Proctors: D. K. Bouault, C. L. George, T. Howell, T. P. Jones, R. J. Martin, L. P. Pratt, D. Thorne, A. R. Wenden. *Head Proctor:* P. J. Mornard.

Number of Students: 80.

Rowancroft Court consists of eight blocks of ten study bedrooms each, and a Tutor's Flat and Common Room. The study-bedroom blocks are built around a stairway on the Oxbridge Pattern. The whole hostel is built on the site of the old walled vegetable garden of Rowancroft House. It was opened in 1961 by the Bishop of Crediton.

NANCHERROW, Spicer Road.

Resident Tutor: Revd. G. K. Booth.
Proctors: E. P. H. Higham, M. R. Wiseman.
Hostel Telephone: 76879. *Number of Students:* 21.

Nancherrow Hostel is a Victorian House, built in 1898, standing on the opposite side of College Road to the main College buildings. It was acquired by the College in 1944, but was not vacated by the A.T.S. until a year later. For many years it was occupied by a General Medical Practitioner.

CLYSTLANDS, Fore Street, Livery Dole.

Resident Tutor: J. Bosanko, Esq. *Telephone:* 58156.
Proctors: K. Jones, G. N. Lindsell.
Hostel Telephone: 72837. *Number of Students:* 30.

Clystlands is a Regency house standing in its own grounds, about five minutes' walk from the College. It was formerly known as Shillard, and then as Southlands, but this name was transferred to the present Southlands, built in part of the original grounds. For many years Clystlands was a small select Hotel. Both Clystlands and Southlands were owned for many years by Edward Force, who was Secretary to the College Governors in the early days.

MOUNT RADFORD HOSTEL, 56 St. Leonards Road.

Resident Tutor: D. Kemp, Esq.
Proctors: R. J. Cook, A. J. Richardson.
Hostel Telephone: 76350. *Number of Students:* 30.

Mount Radford Hostel was acquired by the College in 1967. It is about ten minutes' walk from the College, and is a fine Georgian house with a good frontage and portico. It was originally the Dower House of Mount Radford House. Mount Radford House, built by John Baring and demolished in 1902, stood on the grass crescent at the end of St. Leonards Road, which formed the driveway, passing the Dower House. There was a school connected with Mount Radford from about 1827, but the Dower House was not used for school purposes until 1902. The hostel ceased to be used as a school in summer 1967, immediately prior to occupation by the College.

BELFIELD, 7 Lyndhurst Road.

Resident Tutor: K. T. Collins, Esq. *Telephone:* 77647.

Proctors: K. C. Davies, D. R. Morris.

Hostel Telephone: 72024. *Number of Students:* 32.

Belfield Hostel, eight minutes' walk from College, is a large Victorian house, built in a quiet residential area of Exeter. In 1800, the site formed part of an estate called Tallards. Little else is known about the house, except that it was the home of several families until purchased by the College in 1947.

KILLERTON HALL OF RESIDENCE

Resident Tutor: Sir Richard Acland, Bart. *Telephone:* Hele (88)280.

Proctors: J. C. Bromage, M. S. Cronshaw, C. Davies.

House Telephone: Hele (88) 311. *Number of Students:* 60.

Killerton House, near Broadclyst, is seven miles from the College. It is a small mansion, built in 1780 by James Johnson of Leicester in the tradition of the Adams Brothers. It is set in some of the most beautiful gardens in England, which are looked after by the National Trust and attract about 15,000 visitors annually. The spacious rooms of the house contain a chamber organ, a library and portraits of the Acland family, including a Richmond drawing of Sir Thomas Dyke Acland, the 11th Baronet, one of the founders of Saint Luke's College. In the vast grounds is a Chapel, built in 1842, now one of the churches of Broadclyst parish.

Killerton students have a pronounced community spirit, and attract many other students with their dances and barbecues. They have a licensed Bar, and they are provided with transport to and from College daily.



Diamond £23

10% DISCOUNT

Gerald Mitchell, Jeweller, offers 10% discount on purchases over £1 to all members of the St. Luke's Students' Union

GERALD MITCHELL
Queen Street, Exeter

RULES FOR RESIDENT STUDENTS

1. Students must be in College, their own hostel or College lodgings by the following times:

Weekdays and Sundays	Midnight.
Saturdays	12.30 a.m.

- 2.¹ In the interests of students who wish to work or sleep, silence must be observed in College and hostels after 11.00 p.m.
3. A student who wishes, for good reason, to be out after the stated time must record his name and whereabouts in a specially provided book which will be kept by the Proctor in charge of his residential block or hostel.
4. If a team has a valid reason for returning to College after the stated time, the captain must obtain late leave from the tutor in charge of games.
5. If a group of students has been invited to attend a dance or entertainment at another college, a representative of the group must apply to the Vice-Principal for late leave.
6. For leave of absence from the College (including a weekend exeat) a student must apply to his resident tutor, who will complete and sign an application form. A student in lodgings must apply to his personal tutor.
- A weekend exeat will not include absence from lectures or personal tutorials unless there are urgent reasons.

7. Ladies may be entertained in study bedrooms at the following times:

Mondays	7.00 p.m. to 11.00 p.m.
Tuesdays	7.00 p.m. to 11.00 p.m.
Wednesdays	2.00 p.m. to 11.00 p.m.
Thursdays	7.00 p.m. to 11.00 p.m.
Fridays	6.00 p.m. to 11.00 p.m.
Saturdays	2.00 p.m. to 11.30 p.m.
Sundays	11.00 a.m. to 11.00 p.m.

Students are asked not to entertain ladies in their rooms at other times. However, in exceptional circumstances Resident Tutors are prepared to consider special requests.

8. A maximum of two light bulbs may be used in study bedrooms, provided that in single rooms the combined number of watts does not exceed 150 watts, and in double rooms 300 watts. Electric shavers, tape-recorders, record players and radios may also be used in rooms (provided they do not cause annoyance to neighbours) but not electric kettles, toasters, fires or any other electrical apparatus with a high voltage. Transistors are not allowed in the College grounds.
9. Football and cricket boots must not be worn in corridors or study bedrooms.
10. Students need not attend breakfast, but are urged to do so in the interests of their health. All resident students must be fully dressed at 8.00 a.m. on weekdays (so that the cleaners can begin their work) and at 11.00 a.m. on Sundays. Students are forbidden to cook in College or hostels during the mornings, but they may make tea or coffee.

NON RESIDENT STUDENTS

The rapid expansion of the College over the past few years has caused considerable problems and difficulties. The bulk of students are Non-resident. Nevertheless the College duties and obligations to these students, and by being non-resident or by choosing to become non-resident the students continue to have their responsibilities towards the College beyond immediate academic commitments.

For instance, the non-resident student must be meticulous in giving notice of absence from lectures or absence from Exeter, etc.

TUTOR FOR NON-RESIDENT STUDENTS

All students have a Personal Tutor with whom they should be regularly in touch and with whom they can take up any problems both of an academic and personal nature. The Tutor for Non-Resident Students is involved with problems affecting all or large numbers of non-resident students, for instance problems concerning leases of flats, legal problems regarding tenancies.

The Tutor for Non-Resident Students is R. J. Godfrey, Esq., who can be contacted in College (59384) or out of lecture hours at 29, Broadfields Road, Exeter. (56879).

USE OF COLLEGE FACILITIES

Meals are available for all non-resident students in the College Cafeteria and there is a Coffee Bar. There is also a licensed bar run by the Students Council. Further information regarding locker spaces, changing rooms, etc. is published from time to time.

RULES FOR NON-RESIDENT STUDENTS

1. Addresses must be registered with the College. Any change of address must be notified to the Reception Office.
2. Non-resident students must register with a local doctor.
3. The College must be informed immediately of any absence through illness or other emergencies.

4. A Non-resident student will apply to his Personal Tutor for leave of absence. It is important that the College knows a student's whereabouts if he is not staying in his lodgings.
5. A reasonable standard of dress is expected from Non-resident students.
6. Any reasonable regulations imposed by a landlord or landlady must be accepted, and in the case of full board accommodation the customs of the household.
Excessive noise, late night parties, drunkenness and other forms of anti-social behaviour must clearly be treated as disciplinary offences when brought to the notice of the College authorities.

After full consultation between Principal, Staff and the Students' Council it has been decided that these rules are essential for the well being of residential hostels, and of those students in lodgings. Students are asked to observe them for the well being of the College as a whole.

DAILY ROUTINE

a.m.	7.10	Chapel — Mattins
	7.30	Chapel — Holy Communion
	7.30 — 8.30	Breakfast (<i>Self Service</i>)
	8.45	Chapel — Morning Prayers
	9.00 — 9.50	Lecture (1)
	9.55 — 10.45	Lecture (2)
	11.00 — 11.50	Lecture (3)
	11.55 — 12.45	Lecture (4) (<i>Except Saturdays</i>)
p.m.	12.00 — 1.30	Lunch (<i>Self Service</i>)
	1.00	Lunch (<i>formal Dining Hall</i>)
	1.50 — 2.35	Lecture (5) (<i>Lectures (5) — (9) are</i>
	2.40 — 3.25	Lecture (6) <i>not held on Wednesdays</i>
	3.30 — 4.15	Lecture (7) <i>and Saturdays</i>)
	4.25 — 5.10	Lecture (8)
	5.15 — 6.00	Lecture (9)

6.30	Chapel — Evensong (<i>except Wednesdays and Saturdays</i>)
6.00 — 7.00	Dinner (<i>Self Service</i>)
7.00	Dinner (<i>formal Dining Hall</i>)
10.00	Chapel — Compline (<i>Wednesdays and Saturdays</i>)
Wednesdays and Saturdays:	High Tea 5.00 — 6.00 (<i>Self Service</i>) replaces Dinner

Saturdays:

12.00 — 1.30	Lunch (<i>Self Service</i>)
--------------	-------------------------------

Sundays:

a.m. 7.45	Chapel — Mattins
8.15	Chapel — Holy Communion
9.00 — 9.30	Breakfast (<i>Self Service</i>)
9.45	Chapel — College Communion
12.00 — 12.45	Dinner (<i>Self Service</i>)
1.00	Dinner (<i>formal Dining Hall</i>)
5.00 — 6.00	High Tea (<i>Self Service</i>)
10.00	Chapel — Compline

THE LIBRARY

Librarian: W. M. Molland

The Library is situated on the ground floor of HAIGHTON and is open during term time as follows:

Monday to Friday (except Tuesday)	9 a.m. to 10 p.m.
Tuesday	9.30 a.m. to 10 p.m.
Saturday	9 a.m. to 12.30 p.m.

The attached map shows the layout of the Library since re-organisation and extension. Students should first consult the Subject Index (e.g. Art, History of: 709) and then consult the catalogue to find the titles of books on the subject, filed in alphabetical order, according to authors' or editors' names. If a student is looking for a particular book, he will locate it more quickly by referring to the author index. Please note that biographies and books of literary

criticism on individual authors are catalogued under the *subject's* name in order to group such books together.

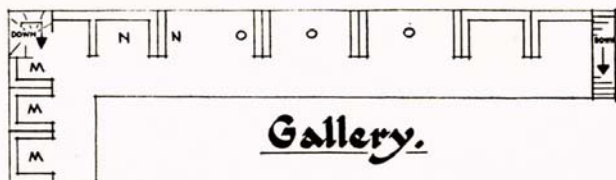
The great majority of the books are available on loan, and have black and white book plates. Reference books have similar book plates in red. With the exception of those in the general reference section, dictionaries, atlases and bound volumes of periodicals, reference books also have a red seal on the spine. These may only be borrowed under exceptional circumstances, on presentation of a note from the student's personal Tutor.

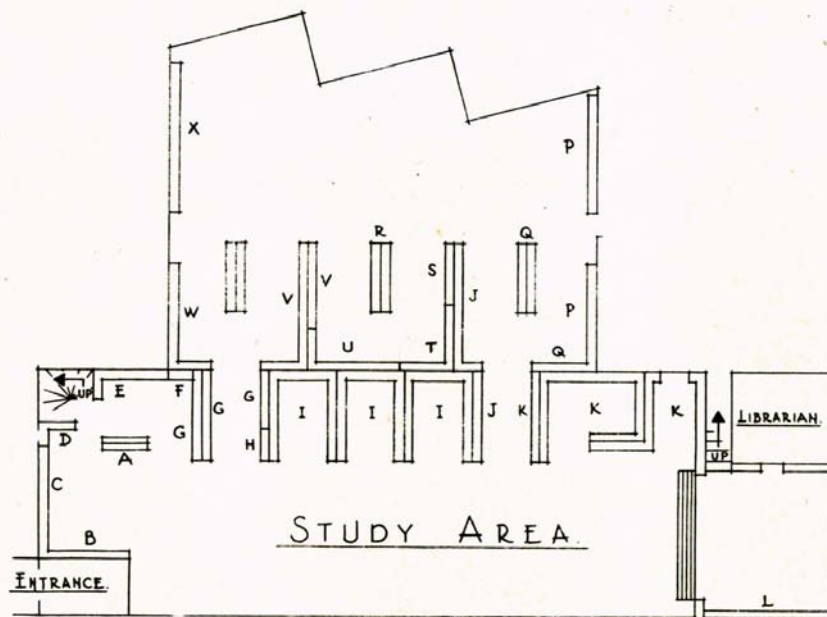
When a student has found the books he wants to borrow, he should fill in the form on the machines on the charging desk at the entrance to the library, hand the pink and white slips to the assistant on duty and retain the buff slip which should be returned with the book. Students are limited to three main library books (i.e. with a Dewey decimal classification number) and two Teaching Practice books at any one time and may keep them for two weeks; after which they must be returned or renewed.

There are Teaching Practice books in the following subjects: Economics, English, Drama, French, Geography, History, Mathematics, Music, Religious Education and Science. These are catalogued separately and have a simple classification mark (e.g. H = History; S.G. = Science General).

The Librarian hopes very much that as many Lecturers as possible will bring their personal students to the Library when it is possible to explain things in more detail. In the meantime do not hesitate to ask. The Library staff is there to help.

Brief cases, kit-bags etc. must be left in the entrance to the Library for security reasons.





Library Plan.

Key.

- A. REFERENCE.
- B. BOOKS THAT CHILDREN READ.
- C. PHILOSOPHY & PSYCHOLOGY.
- D. SOCIOLOGY.
- E. ECONOMICS.
- F. SOCIAL WORK.
- G. EDUCATION.
- H. ENGLISH LANGUAGE & LITERATURE.
- I. ENGLISH LITERATURE.
- J. BIOGRAPHY.
- K. HISTORY.
- L. MUSIC.
- M. FOREIGN LANGUAGES (EXCEPT FRENCH)
- N. FRENCH.
- O. RELIGIOUS EDUCATION.
- P. GEOGRAPHY.
- Q. MATHEMATICS.
- R. ART.
- S. GENERAL SCIENCE.
- T. PHYSICS.
- U. CHEMISTRY.
- V. BIOLOGY.
- W. ANATOMY & PHYSIOLOGY.
- X. P. E. AND SPORT.



Some might call him a zebra. To me he's Socrates. Matches the scarf, too. Difficult in the digs. But not at Martins. They understand. They're so friendly at Martins — especially to students.

Martins have an especial knowledge of a student's need to budget grants and allowances carefully which is why so many students find it worthwhile to open an account at Martins.

Martins go to extremes to be helpful

6 Bedford Street, Exeter

Tel: Exeter 55818 Ask to see Mr. Crossley

MARTINS
BANK 
LIMITED

Telephone: 75020

3 minutes from College

R. T. GOUGH

69 Magdalen Road
Exeter

NEWSAGENT TOBACCONIST
STATIONER CONFECTIONER
STUDENTS STATIONERY REQUIREMENTS
OXFORD PADS

PAPERS, MAGAZINES, ETC.
DEVILERED DAILY TO COLLEGE

ROOM NUMBERS

Many rooms have changed their function. The right hand list is that used at present. The numbers are shown on each room.

Main

<i>Main College</i>	<i>Previous allocation</i>	<i>Present (Sept. 1968) allocation</i>
Room 1	Theatre	General Lecture Room
2	Music II	Music and Drama
3	formerly Music I	C.C.T.V. and General Lecture Room.
4	Art and Craft	Art
5	Art and Craft	Design
6	formerly Art and Craft	French Language Laboratory
7	rear of old kitchens	Pottery

MAIN COLLEGE HOLNICOTE

Room 8	formerly No. 2 Dining Rm	Music and English
9	formerly Staff Breakfast Rm	General Lecture Room
10	Music	Music

BARING COURT

Room 11	Physical Education	Physiology Laboratory
12	Art and Craft	Woodwork
13	Art and Craft	Metalwork, Photography etc.
14	New Cedarwood Block	Economics and General Lecture Room; Evening Common Room
15	New Cedarwood Block	General Lecture Room; Evening Common Room
16	Education North	Education and General Lecture Room

17	Education South	Education and General Lecture Room
18	Physical Education	P.E. and General Lecture Room
19	Physical Education	P.E. and General Lecture Room
20	Gymnasium No. 1	Physical Education
21	Gymnasium No. 2	Physical Education
22	Swimming Bath	Physical Education

HAIGHTON

Room 23	formerly Quiet Room	History and General Lecture Room
24	formerly Coffee Bar	Mathematics and General Lecture Room
25	formerly Reference Library	Mathematics and General Lecture Room
26	History	History and General Lecture Room
27	Mathematics	Mathematics and General Lecture Room

SCIENCE BLOCK

Room 28	Science Theatre	General Lecture Room
29	Chemistry	Chemistry Laboratory
30	Physics	Physics Laboratory
31	Biology	Biology Laboratory
32	Chemistry	Chemistry Laboratory

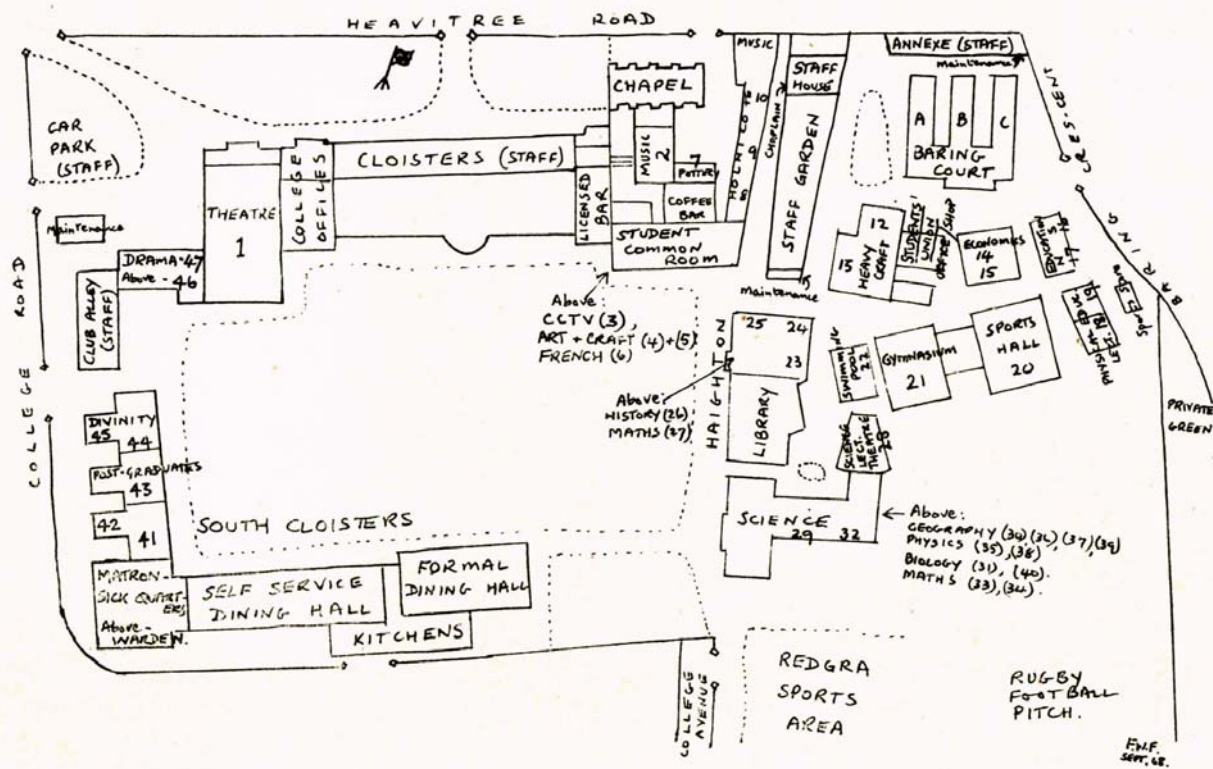
33	Mathematics II	Chemistry and General Lecture Room
34	Mathematics I	Physics and General Lecture Room
35	Physics	Physics Laboratory
36	Geography II	Geography and General Lecture Room
37	Geography I	Geography and General Lecture Room
38	formerly Education	Biology and Primary Science
39	formerly History	Geography and General Lecture Room
40	Biology	Biology Laboratory

SOUTH CLOISTERS

Room 41	} Present lecture room to be divided	General Lecture Room and Evening Common Room
42		
43	Graduates Room	General Lecture Room and Evening Common Room
44	Divinity	Education and Post Graduates
45	Divinity	Divinity and General Lecture Room
		Divinity and General Lecture Room

WEST WING

Room 46	Drama Studio	Drama
47	formerly Education West	Audio-Visual Aids and General Lecture Room



When you have plenty to think about—a bank account makes life easier

You want your grant or allowance to go as far as possible, but you don't want to spend too much time worrying about it. And you needn't. A Lloyds Bank account helps you keep an eye on your spending—you plan your payments when you pay by cheque. You don't need to carry unnecessary amounts of cash around with you. And you have regular statements of account so you always know where you stand. Call at your local branch today.



Let Lloyds Bank help you to plan

MAIN EXETER BRANCH: 234 HIGH ST., ALSO AT 83 SIDWELL ST., 2 ALPHINGTON ST., ST. THOMAS; HEAVITREE AND PINHOE

THE STUDENTS' UNION

From ALAN DARKINS, Union President 1968/69

Our College has the distinction of being the oldest in the country, being founded well over 100 years ago in 1839, and the Rugby Club formed in 1860, was close on the heels of the famous "Club" at Blackheath which is just two years its senior. During the last hundred years both the College and the Rugby Club have made great progress to be amongst the leaders in Britain, and fortunately for us, the students of 1968, new buildings have been regularly added to the original building on the Heavitree Road site, and in addition to rugby football we now have over thirty clubs and societies to cater for almost all interests within College.

During the past year the South Cloisters block, the new Dining Hall and the Cafeteria have been completed. Teething troubles have been experienced, but given time and a little patience these can be overcome. The swimming pool has now moved indoors to provide round the year facilities, and although it is still not of Olympic proportions, twelve months' use in the warm is a lot better than about six weeks in the Summer Term.

In the summer vacation of 1968, the Student's Union office and stationery shop moved to new and more spacious accommodation close to Baring Court. The move was necessitated by the rapid increase in numbers in College and is hoped that both members of the Student's Union and the Academic staff will make full use of these improved facilities and the wider range of goods that are now offered.

This year we have more women students in College than ever

before, and I am hoping that the ladies will soon be joining in many of the College activities; forming new clubs and societies where these are required and helping in the administration of the work of the Student's Council.



At a time when the lack of communications between staff and students in many Colleges has received so much attention in the National Press, we have been fortunate in College to have a more progressive staff who are both prepared and willing to talk with students. Mr. Godfrey has taken over from Mr. Johnson as the tutor for Day Students and his hard work in this field will greatly be appreciated. The year ahead should see a further strengthening of communications within College, when the College Committee comes into operation, while Mr. Campbell (Head of the P.E. Department) has taken a significant step by inviting one 4th year and one 3rd year P.E. student to be members of his curriculum committee.

The Bachelor of Education course has become a thorny problem in Exeter, but efforts are being made by staff and students alike to rectify certain discrepancies and bring about a degree that is both better structured and organised.

Our College is therefore, a place of much activity and change, and so it is vital that all students play their full part in College activities. The more you put in, the more you get out of College life.



Dining Hall and South Cloisters

THE STUDENTS' UNION

It has been said that 50 per cent of a student's education comes from lectures and 50 per cent from fellow students. The implication is clear; that the non-academic side of life in College is as vital and rewarding as the Academic side and that participation in the social aspects of College are as necessary and fruitful as academic study. Through the medium of sports Clubs, societies and social functions the life and education of each student can be enriched and increased.

The value of non-academic activities is obvious but their importance is realised only by the financing and administering of these activities which is done by Students themselves. The numerous Clubs and Societies, the vast and varied Social programme and the Union Bar and Shop are organised by Students for Students.

However, to illustrate just how the Union is run necessitates a more precise description. The Students' Representative Council usually meets once a fortnight to discuss and decide upon the various proposals brought before them. Their aim is first, to represent the Student body to the Principal and his Staff, second to represent the Student opinions at a local and national level, and more positively to finance, organise and administer the Union. This side of the Council's activity is done by the various Sub-Committees of Council, details of which appear later in the handbook. The secretary of each Sub-Committee sits on Council and has voting rights, whilst the rest of the Council is composed of the "Year Representatives", there being five representatives for each year in College. Therefore with the six secretaries, the fifteen year representatives and the President and two Vice-Presidents, the Council has a complement of 24. In order to streamline the work of Council, the Executive Committee which consists of the President, the Vice-Presidents, the Union Secretary, the Student Treasurer and one other member from the floor of Council, meets more often than Council to formulate, discuss and investigate the recommendations and proposals that are put before Council.

All students may attend Council meetings and may speak at the invitation of the President. We would like all students to take an active interest in the affairs of their Union and we welcome any suggestions. As mentioned before, the Union exists for Students and is run by Students and we urge you to take the fullest advantage of what the Union offers in order to make your time as a "Student" as fruitful and worthwhile as possible.

THE STUDENTS' COUNCIL 1968/9

Chairman: A. Darkins

Vice-Presidents: R. Allen, P. Mornard

4th Year Representative

Bob Hare (*B.E.D.*)

3rd Year Representatives

F. Biggs: *Executive*

J. Osborne: *Catering Officer*

A. Richardson: *Elections Officer*

B. Thomas: *Publicity Secretary*

D. Wilce: *College Clubs' Secretary*

2nd Year Representatives

C. Mitchell: *Secretary*

J. Owen: *Treasurer*

M. Leonard: *College Clubs' Treasurer*

J. Payne

One more representative to be elected

1st Year Representatives

5 Representatives to be elected

Post Graduate Representative:

Women's Rep.: Sylvia Murphy

Common Room Sec.: Caroline Watson

Social Sec.: Pete Plinston

Bar Sec.: Graeme Lindsell

STUDENTS' COUNCIL EXECUTIVE COMMITTEE 1968/69

PETER MORNARD

Vice-presidents:

BOB ALLEN



Chairman: **ALAN DARKINS**

FRANK BIGGS

Treasurer: **JIM OWEN**



MALCOLM LEONARD



BOB HARE



MRS. JOY SHORT
(*Permanent Secretary*)



ANDY RICHARDSON

JOHN OSBORNE



PETE PLINSTON



BARRY THOMAS



MRS. W. SHORT
(Stationery Shop Assistant)

WANTED!

Caroline Watson, Common Room Secretary
David Mills, N.U.S. Secretary

GRAEME LINDSELL



DAVE WILCE



SUB-COMMITTEES OF THE COUNCIL

1968 - 1969

The bulk of the work of the Students' Council is done by the following Sub-Committees, who are always open to help and suggestion from members of the Union. If you have any comments, please call in at the Union Office, or contact any of the members of the various Committees

NATIONAL UNION OF STUDENTS' COMMITTEE

Chairman: Frank Biggs *Secretary:* To be appointed
Travel Secretary: Malcom Cridle

The committee is responsible to Council for carrying out N.U.S. administrative work, and informing all students of the work of N.U.S.

Members of the Students' Union are automatically members of the N.U.S. which, with present members of over 380,000 is one of the largest Unions in the country.

The N.U.S. nationally represents the whole range of Student opinion on all aspects of education and welfare. Internationally the interests of British students are represented at the International Student Conference.

National councils are held biannually and this year will be held at Margate and at York, as usual a delegation from St. Luke's will be attending these conferences.

The N.U.S. is not a political organisation, but a pressure group, making its influence felt at government level. Recent meetings with the Committee of Vice Chancellors and with the A.E.C. at national Executive level have resulted in joint statements on the long awaited reform to be implemented in universities and colleges under the main headings of participation, autonomy and the recommendations of the Latey Committee.

At St. Luke's the N.U.S. is now becoming more effective and with Frank Biggs holding the office of N.U.S. Chairman for the South West of England is represented at national executive level.

Any problems in the field of grants or education and welfare can be brought to the notice of the N.U.S. Chairman who will deal with them in complete confidence.

STATIONERY SHOP

Chairman: Frank Biggs *Shop Assistant:* Mrs. W. Short
Secretary: to be appointed

The shop has now settled in to its larger premises and has expanded its range of goods to include specialist materials for various College Departments. The secondhand book sales have proved very successful and this will be extended, with effect from November 1st paperbacks will have been on sale, mostly Pelicans and Penguins to start with but we hope to be able to provide a wider selection later. We now have a supply of Artists materials and hope shortly to be able to supply all needs in this field.

Shop hours are 9.0 a.m. to 2.30 p.m. Monday to Friday, this will however be extended if there is sufficient demand.

BAR COMMITTEE

Chairman: Bob Allen *Secretary:* Graeme Lindsell

The Committee are responsible for the running of the Bar. A permanent Steward is now employed and it is hoped that the Bar will feature as the centre of College Social life. The stock is of great variety and the prices very competitive with Exeter's pubs, beer generally being 2d a pint cheaper. Any profits are automatically ploughed back into providing better facilities so please use the College Bar — its in your interests!

ST. LUKE'S SOCIAL COMMITTEE year 1968-69

Chairman: Bob Allen

Secretary: Peter R. Plinston

Assistant Secretary: Graham Middleton

Each year the Soc. Committee learns by experience and so after several years of organizing social functions we are now capable of providing some very good entertainment at very low cost. However to make these functions really successful we need the maximum amount of support from you students here in college.

We would like support from the 1st year, especially at the committee level, and if you would like to work on the committee then please contact any member of the committee.

We are hoping to widen our field of activities even further this year. Apart from making the general dances more exciting we are hoping to try and organize two concerts, one jazz and one folk, later on in the year. Plus an open air barbeque nearer Easter.

If however anyone has any valuable suggestions or offers in mind then please contact anyone on the social committee and we'll see what can be done.

<i>Group Organiser</i>	Harvey Siggs	2nd
<i>Publicity</i>	Grahame Middleton	2nd
<i>Decorations</i>	Philip Ramsay	3rd
	Graham Lees	3rd
<i>Lighting</i>	Alan Morgan	3rd
<i>Group Liaison</i>	Nigel Parkinson	3rd
<i>Room Arrangements</i>	Peter Harmill	3rd
<i>General Reps.</i>	John Payne	2nd
	Jim Owen	2nd
	Chris Owen	3rd
	Tony Burnell	1st

SOCIAL EVENTS MICHELMAS TERM 1968

Come back to College

Monday September 23rd.

Coming-up Ball 10/-

Thursday October 3rd. 8—12.30.

1st Hop 5/-

Saturday October 19th. 8—11.30.

2nd Hop 4/-

Saturday November 9th. 8—11.30.

3rd Hop 4/-

Saturday November 16th. 8—11.30.

Christmas Ball 10/-

Monday December 9th. 8—1.30

Go Down for Xmas Vac.

Thursday December 12th.

COLLEGE CLUBS' COMMITTEE

Chairman: Peter Mornard

Secretary: Dave Wilce

The College Clubs' Committee is increasingly becoming a very important Committee. With College Clubs increasing in numbers and finance not increasing to the same degree, it is important that there is more liaison between clubs and that the clubs themselves work efficiently. It is our function therefore, to ensure that is achieved through regular meetings and discussions. This however is not our sole function, our territory is vast and covers a wide range and we are directly responsible for the formation of new clubs and societies and their running.

The scheme adopted last year of coach bookings through the committee was a big success and saved the clubs a lot of money and consequently has been continued again this year.

The committee is steadily growing, besides the Chairman and Secretary we have a Transport Manager—Mike Perrott and a Treasurer—Malc. Leonard, who deals with claims by clubs for expenses from their allocation for travel etc.

It is the object of this years Committee to work very closely with all clubs and societies, to help and guide them in any way possible. With closer liaison between clubs, then all will benefit in the end.

COMMON ROOMS COMMITTEE

Chairman: Peter Mornard

Secretary: Caroline Watson

Committee: Ian Rolling
(Noticeboards)

Pete Stacey
(T.V./Newspapers)

The Committee is responsible for the day to day running of the Common Rooms. Their duties include the provision of Newspapers, the maintenance of T.V. sets both in the main Common Room, and in College Hostels, the distribution and general appearance of Notice-board space, the provision and upkeep of certain machines, and Coffee Bar facilities. Since the Common Room is for the use of students, we are very keen to receive constructive criticisms and comments, which, if feasible, we will do our best to implement, if of course financially possible. Your co-operation is asked in ensuring that Common Room facilities are maintained in reasonable order.

PUBLICITY COMMITTEE

Chairman: Clive Mitchell

Secretary: Barry Thomas

The Publicity Committee exists mainly to publicise the work of the Students' Council, largely through the channels of the College Newspaper, "Luke Around." It also acts as a liaison between Staff and Students, keeping the staff informed of Union activities.

RAG COMMITTEE

Ernie Lloyd, Dave Lander (1967)

The Annual Rag, organised by all Student Bodies in Exeter, takes place in February, when the City is literally taken over for the day. Our contribution in the past has always been limited, mainly because of lack of support by our students, and we hope this year to show the flag more extensively in what is usually a day to remember.

We ask for the support of all students.

THE FINANCING OF THE UNION

Whatever other questions you have been asking yourself one must predominate, "Who finances the running of the Union?"

There are two main sources of finance: the Government and the Student Body. The Department of Education and Science grants the Union £5 0s. 0d. per head per year, this grant totals approximately £5,250 with a Student population of 1,200. However this grant is not large enough to cover the expenditure of the Union so the Student is required to pay a subscription of £3 annually. Therefore the total income of the Union is £8,400.

This income is spent in the following ways: To the 38 Clubs and Societies goes a sum of £5,500; this allows for travel expenditure, the payments for refreshments, officials' fees when necessary and secretarial and miscellaneous expenses. The largest Club is the Rugby Club, which will receive an allocated grant somewhere in the region of £1,000 this year and the smallest Club is the Chess Club which receives about £10 annually. As the large expenditure on Sport indicates, the accent in the Union, and in the College, is upon Sports participation.

The remaining £3,000 is spent on the "running costs" that the Union incurs. The payment of newspaper, television and stationery charges amounts to a sum of £1,500 whilst of the remaining £1,400, £230 pays our super-efficient Secretary and the remainder allows the Union to acquire office equipment, pays miscellaneous charges and usually save some capital. This year has been the first year in which the Union has not been able to save money, but the policy followed by previous Councils allowed for the purchasing of a Mini-Bus and we should aim at setting aside a small sum of money so that large items of expenditure can be easily met.

So when a student pays the subscription it is hoped that he/she realises it is very easy to get their moneys worth, and that it is expected of all Students that they will participate as widely as possible in the Clubs, Societies and Social functions that the Union provides.

MESSAGE TO YOUNG AMERICAN GENTLEMAN IN ROWANCROFT COURT

Sir. It must come as something of a surprise to find yourself a student at St. Luke's College. There you were in that travel agency way back in Port Jefferson N.Y. booking a straightforward railroad trip to Atlanta Ga. Well, even the best travel agents make an occasional mistake but without wishing to upset any entente—cordial or otherwise—we feel mistakes like this are ludicrous, un-American, even. However, sir, if you would be kind enough to call first thing tomorrow morning, we feel convinced that they will sort things out in a most satisfactory manner. Parks are members of the Association of British Travel Agents. Relied upon since 1883, they have branches from Bournemouth, Hants, to St. Austell, Cornwall, and they have no connection, repeat, no connection, with any travel agent in Port Jefferson, N.Y.



LUKE AROUND

Editor: Edwin Astill

Luke Around, the College newspaper, has been established for a year now, and twelve numbers have been issued. With the growth of an institution such as Saint Luke's there is a danger of a fragmentation in its activity, and to counter such a possibility in the College, *Luke Around* was brought into being. As well as news items the paper reports on the activities of the clubs at College. We also feel that what little culture there is in Exeter should be given every possible help, and we publish criticisms of most of the major theatre productions in the city. This is in addition to the articles of general interest to students.

We rely to a great extent upon students writing to us, be it criticisms, articles, or letters, and hope that this source of material will continue during the year. *Luke Around* is on sale fortnightly during the term, price 3d. Copies can be obtained from hostel reps., the library desk, or from our salesmen.

the

*ALL THE LATEST IN CLASSICAL,
FOLK, ORIENTAL, JAZZ AND WE
STOCK POP TOO !*

Enquiries for off beat
records are our speciality

17 PARIS STREET
Telephone: 71999

BANK

LETT

CLUBS AND SOCIETIES

The following notes are brief and give a short background of all the various activities organised at a Club level throughout College. For further details contact the Club Secretary who will be only too pleased to answer any queries. Each Club also has its own notice board space. Watch notices to keep fully up to date.

Association Football

President: W. O. Rice, Esq.

Club Captain: A. Wenden

Chairman: P. Mornard

Secretaries: H. Lisle, D. Harper, R. Swann

Treasurer: D. Hazeldine

The club is fielding six XI's again this season.

The club is one of six in the world to reach a hundred years of age and throughout that time the basic aim has been,

"... to promote a high standard of football ... and ... good clean sportsmanship".

This aim was realised last season as the First XI were awarded the Merit Cup in the second season in the highly competitive Western Football League. The scope of the club is being expanded as a party of twenty toured America in September. The teams from the 2nds to the 6ths are well catered for and we trust that freshmen will have come to College fit and ready to prove their ability.

Athletics Club

President: Mr. D. Edgecombe

Captain: Chris Booth

Secretary: Dave Turner

Vice-President: Dr. P. Travers

Vice-Captain: R. M. Lee

Treasurer: Clive Smith

Athletes are made during the winter and at St. Lukes the training is aimed towards this. Competition begins with Winter Indoor Meetings in the Midlands and South Wales, against top opposition. An early and thorough preparation is therefore advised and training sessions exist for this purpose on most evenings. Variety in training is attained by special jumps, decathlons, weight sessions and exhausting trips to the sand dunes at Bantham. Good class competition is guaranteed for the season with visits from major clubs in Southern England and Wales. The club itself has several athletes of regional and international capabilities but lacks somewhat depth in most events.

Visiting clubs are entertained on a fine newly laid track at Clifton Hill, which is open for training sessions most of the term time. With expert coaching and advice available on hand from qualified and experienced coaches—no athlete is forgotten. A great season was attained this year and by preparing now we hope for an even better season this time.

There must be an event for you, so come along and give it a try!

Badminton Club

Captain: P. Hammell

Secretary: R. Moore

Vice-Secretary: A. Morgan

Treasurer: R. Moore

This year will be an important one for the Badminton Club for two reasons; firstly, the continuation of weekly coaching sessions for beginners and more experienced players, and secondly, the introduction of a ladies team, which will be unique in the Badminton history of St. Lukes.

The club is running three teams during the year. The second and third are playing in the Exeter and District League plus a number of friendlies.

The first team, have to travel further afield to find suitable opposition. Fixtures for the season include St. Paul's College, Cheltenham, Borough Road College, and universities such as Oxford, Bristol, and Soton Universities, as well as the best opposition by the way of club sides in the south-west.

Basketball Club

President: Rev. F. Fuller

Club Captain: A. T. Simmons

Premier Team Secretary: D. Brunt

Treasurer: A. Powesland

Premier Team Captain: R. Harriot

Exeter and District Secretary: S. Terry

Publicity: S. Smiky

Throughout the Basketball circles of the country, St. Lukes is now a respected name. Last season, the Premier team, aided by the second team made a clean sweep of the South-Western titles, came third in the National League and are now British College Champions. This coming season we are hoping for even greater success.

But the lower teams are never forgotten and the 2nd team did well to win the 1st division of the Exeter and District League. We intend to have a Premier team representative to act as coach for all lower team games, in the hope of raising the average standard of the club, and if you are not keen to play but are keen to help, then there is always room for table officials.

Boat Club

Captain: J. Osborne

Vice-Captain: P. Cloke

Boatman: K. Turner

Secretary: W. Slogrove

Treasurer: J. Paige

With a river only half a mile away our college is one of the few that have a boat club. Last year club members increased from the

previous year, but the club still needs and has room for a greater capacity of students.

Our last season was one of the most successful and rewarding, and included fixtures against B.R.N.C., Dartmouth, R.E. Manaton, and Seale-Hayne Agricultural College, to name only a few. We attended many of the country's regattas, e.g. Evesham, Worcester, Hereford and Plymouth, and it is hoped to continue the practice of sending a crew to the Royal Regatta at Henley.

The new season's fixtures include:

Seale-Hayne	Head of the Canal Race	Evesham Regatta
B.R.N.C., Dartmouth	Head of the Exe	Hereford Regatta
R.E. Manaton	Tideway H.O.R. Putney	Seale-Hayne Regatta

Canoe Club

Chairman: J. Harding

Captain: D. Lander

Secretary: M. Hodson

Treasurer: A. Miles

During the last couple of seasons, the Canoe Club's activities have markedly changed. Instead of the occasional day trip down the Exe or Teign, or gentle cruising on the Exeter canal, we have exciting long distance racing and slalom competition.

The Club owns two racing doubles, and one racing single. During 1968-69, a Club slalom boat will be bought, and we hope to be able to compete even more intensively next season, taking part in both local, national and international events.

Aside from competition, much of our time on the water is spent surfing at any of the local beaches. The slalom boats which most members of the Club own privately, have proved very exciting "vehicles" in the waves.

Eight Club members this year gained the British Canoe Union Basic Proficiency Award, five of these went on to gain the B.C.U. Instructor's Award—a very useful, nationally recognised certificate. By practice in the now covered-in pool, we hope to raise our standards even higher, e.g. rolling practice and coaching.

John Webbers, High Street, Exeter (largest sports outfitters in the West of England) give 10% discount off purchases of sports clothing and equipment to members of St. Luke's Students' Union. Will the first Union member to have realised this please put his hand up



SAVE

Money! Money! Money!

All your Stationery needs; Oxford Pads; Ring Binders; Wallet Files; College Notepaper and [Envelopes, etc. etc.

Top Quality Goods at Rock Bottom Prices. Shop at the Student Shop run by Students for Students

**ALL YOUR STATIONERY NEEDS
SAVE MONEY! MONEY! MONEY!**

go to the

**STUDENTS' UNION
STATIONERY SHOP
opposite Baring Court**

The Chapel Choir

Director of Music: P. A. O'Brien, Esq., M.A., F.R.C.O.

Organ Scholar: Robert Talbot

The focus of life in an Anglican College is the Chapel. The function of the Choir is to lead the Corporate Worship on Sunday mornings, however in addition to this main duty the Choir sings regularly in The Cathedral and has visited Coventry frequently and also Westminster Abbey.

At the present time the Choir consists only of Men's voices singing alto, tenor, baritone and bass compositions, but as there is an increase of women students in College we would like at some time in the future, to sing S.A.T.B. works. If you have an interest in singing in the Choir please contact the Organ Scholar at 59 South Cloisters.

Practices are held on Thursdays at 5.15 p.m. in Music Room 2.

Chess Club

President: Mr. O'Brien

Joint Captains: D. Edwards, D. Thorne

Secretary: P. Jackson

Understandably, the Club has always been one of the smallest and less distinguished clubs in a College where so much emphasis is laid on physical activity. Nevertheless, the Club has bright future. It has a nucleus of hard-working members, who are steadily gaining in experience and enthusiasm despite some setbacks. An Individual Club Championship (with a cup!) has been started, and we are continuing our patronage of the Moyle Cup in which we participated quite successfully last season, and we shall continue our games in the Exeter and District League, which has many good teams. But all these plans cannot be implemented without sufficient support. Our future depends on you, whoever you are, beginner or expert.

The Club meets at 7.30 p.m. each Monday in Dining Room 1, South Cloisters.

Christian Union

Chairman: C. Wood

Secretary: P. Burdon

Treasurer: M. Derrick

Prayer Secretary: R. Collins

Missionary Secretary: R. Allen

There is a Christian Union in College because we feel that Christianity has a lot to say about the problems and questions which crop up in student life. As a Society we exist to unite those in College who have accepted faith in Jesus Christ as the foundation on which they are building their lives, and to try to help those who are confused with questions and difficulties regarding the Christian faith.

The meetings on Tuesday evenings include discussions, films, missionary talks, folk singing and outside speakers covering a wide range of topics. The activities are not restricted to St. Lukes, but are held in conjunction with other colleges and organisations in the area, notably with the Christian Unions at Rolle, St. Loyes and the Royal Devon and Exeter Hospital.

You will have received full details of our activities early in the term, and we hope you will support us.

The Cricket Club

It is reasonable to say that we have a thriving college cricket club. We run three sides which play regularly on Wednesdays, Saturdays and Sundays.

Our first eleven has always been strong; at present we are the top club in Devon. We have a variety of fixtures, playing the better Devon sides as well as other colleges such as Cardiff, Borough Road and Bristol University. The most attractive fixture next season will be against Somerset Seconds. Naturally our seconds and thirds play more locally but nevertheless the standard is high.

Last season, the firsts were unbeaten, winning nine out of thirteen. The seconds were beaten once, and then by only four runs, whilst

the thirds had a hundred per cent record. A high standard, which we aim to maintain!

We strongly advise all you cricketing first years to make your talents known to us by attending winter net sessions which commence next term. Because of the brevity of our season it is imperative that we get the teams sorted out as quickly as possible.

Finally, a welcome to anyone with interests in umpiring or scoring, without which the game could not go on.

Look out for details of an introductory meeting to be held later this term.

Cross-Country Club

President: K. D. Jack, Esq.

Captain: M. Chivers

Secretary: T. Fletcher

Assistant Secretary: D. K. Bouault

Treasurer: R. Rogers

Woodbury Secretary: I. R. Grey

This year the club will have a running squad, and it has arranged interesting fixtures ranging from local school opposition to participating in Devon Cross Country League races, road relays and inter college fixtures. This club is open to anyone who can put one foot in front of another; you do not have to be good to participate as emphasis is on competing and enjoyment. Many join the club to keep generally fit, perhaps even for other games—all are welcome! Most of the present core of the club have had little previous running experience, but, for example, rugby players have achieved remarkable results.

In the past season much success was achieved by the "trotters" against local schools, whilst the "stars" had much success in the Hyde Park Relay and in our own event the Woodbury Relay, which once again attracted much talent and was a great success.

Our fortunes for the future are again in the balance, dependent on the quality of the First Year and the progress made by present

members during the summer vac. We hope, however, to maintain the very high morale and team-spirit of the club, as well as improving competitive results.

The Devon and Dartmoor Society

President: J. B. Norman, B.Sc. Econ.(London)

Chairman: T. Howell

Secretary: A. M. Sutton

Treasurer: C. Smith

Ten Tors, Orienteering

and Y.H.A. Representative: C. Appleton

"Bogtrotter" Editor: A. Townley

Publicity Officer: N. Gowlett

The county of Devon offers ample opportunity for hiking and the Devon and Dartmoor Society caters for this interest. Hikes are arranged, in conjunction with Rolle and St. Loye's Colleges, once a fortnight on Sundays throughout the year. The hikes themselves, seldom longer than 10 miles, are always varied, ranging from crossing the bleak but fascinating slopes of Dartmoor, to the more mellow South Devon coastal walks. The Society even in fact ventured over the "border" last year by visiting the Doone Valley on Exmoor, and a similar hike is being arranged for this year. Taken at an easy pace and with the informal atmosphere, all hikes are most enjoyable. The *Bogtrotter* news-sheet gives useful details about the route and points of interest etc.

There are several additional branches within the society. There is a Y.H.A. section and a team is going to be entered for the Ten Tors expedition. For the latter it is hoped there will be better support than last year.

Another branch, orienteering, which was begun only last year, reached such a level that St. Lukes won the Colleges Championship, and our intermediate team came fifth in the National Championships. It is hoped that this success will continue.

As in previous years a Charity Hike is being organised. Also in addition to the hikes, social occasions are being planned as well.

THE DRAMATIC SOCIETY

Chairman: F. G. Smith, Esq. *Publicity Manager:* A. White
Secretary: D. Manning *Social Secretary:* R. Lowe
Senior Treas: D. E. Kemp, Esq. *Stage Director:* S. Willett
Hon. Treas: D. Thomas

The Dramatic Society has now been in operation for many years, and has an extremely high reputation, both inside and outside the College, for its very high standards. The Society mounts three productions per year, in November, February and March; in recent years, the latter production has been included as part of the Exeter University Arts Festival.

Productions in recent seasons have included Shakespeare's "The Tempest," Samuel Beckett's "Waiting for Godot," Brecht's "The Caucasian Chalk Circle," and "Ubu Roi," by Jarry. As can be seen the Society's scope is a very broad one, and, in addition, a substantial reputation has been gained in the field of revue. Social occasions are frequent, and one of the Society's most fundamental aims is to encourage the coming-together of staff and students on an equal footing to participate in theatre; many productions have seen a remarkable, and a highly desirable, degree of staff-student co-operation.

All aspects of theatre-craft are amply catered for, and there are excellent facilities for backstage and technical work. Keep a lookout for details of the Society's first social function of the year. Any enquiries should be made to D. J. Manning, via the letter-rack.

This season opens with Mexican, a piece of total theatre written by a Luke's Student which is the College entry for the N.U.S. Festival in Exeter this year.

Two one acts follow, "Bloody Emu" and "Daydream" for the same festival.

"Next time I'll sing to you" by James Saunders is the next production and the season is brought to an end with the ever popular "Chips with everything" by Arnold Wesker.

Dates of performances:
Mexican—18-23 November, 1968.
Bloody Emu/Day dreams—3-7th December, 1968.
Next time I'll sing to You—3-8th February, 1969.
Chips with Everything—10-15th March, 1969.

Folk-Song Club

Chairman: Martin Fowles
Secretary: Roger Greenhough
Committee: Stephen Greenwood, Harvey Siggs, Martin Farmer,
Hamies Bentley, Martin Bloomer, John Sobey, Fred Grindrod.

Constitution

The Club exists to promote interest and participation in the folk-music of this and other lands.

The club follows a liberal policy with regard to music and welcomes the best from both traditional and contemporary song.

Last year proved to be a success although we were continually dogged with administrative difficulties. We are not out of the wood yet with regard to premises, and for the moment we meet in a small room in the Mint Tavern in Fore Street. The premises are to be improved and we should have a large room before long. At that time nationally known guests will perform at the club as well as resident singers.

Come and join us any Wednesday night. You'll be welcome.
(Adm. 2/6d.)



D R A M A



A N D



O P E R A

Golf Club

President: Dr. Turner
Secretary: Stuart Neil
Treasurer: David Taylor

We play golf at Manor House, Moretonhampstead on perhaps the most picturesque course in Devon. The club thrived last year with many enthusiastic members, including, we are very pleased to say, several members of staff. As students we are charged an especially low annual fee to play on the course and, provided each person begins with his own clubs, it is as inexpensive to play golf here as most other sports. The first team remained undefeated last year and we look forward to maintaining this record against more difficult opposition. New members will be most welcome, male and female, experienced golfers and beginners, whom we invite to embark on a sport which can be played until the age of ninety.

Historical Society

Chairman: C. Piggott
Secretary: P. Burden
Treasurer: A. Miles
Publicity: M. Babb, M. Perrott
Committee Members: T. P. Jones, R. Butterworth

This Society, refounded in 1967 holds, as its primary aim, the desire to stimulate student interest in History in all its aspects. To this end, the programme for the coming year includes lectures, which are often illustrated, by well-known local historians on topics of both local and national interest, films, discussions and social functions.

We hope to run in conjunction with Rolle, St. Loyes and the University Historical Societies, and also to broaden our scope to include the Exeter Historical Society and the Devon Archaeological Society.

We hope we may rely on the support of students and friends alike.

Hockey Club

Club Captain: I. McGinn
1st XI Captain: D. Collison
Vice-Captain: J. Lemon
Secretary: G. Jones
Fixtures Secretary: D. Jones
Treasurer: G. Tredwell
Publicity Officer: To be elected
1st Year Rep.: To be elected

The season 1967/68 was a great success: all the team had fine records. We sent teams to both Folkstone and Thanet festivals where a great time was had by all, and we were reasonably successful in the hockey.

We have a fairly full fixture list which includes our arch-rivals Loughborough, St. Paul's, Cheltenham and King Alfred's, Winchester.

We run three teams, and trials were held at the beginning of this term.

Judo Club

Chairman: D. Jones
Club Captain: W. Burton
Secretary: A. Dugan

The Judo Club has hardly got off the ground in the past two years, but fortunately there has been a small nucleus of members who have managed to keep the club going. In the one competition held the University Judo Club were beaten.

The Club does not only practice judo. It holds gradings and contests between other clubs. This year it is hoped to expand fixtures and have matches against the Exeter Club, Exeter University and other local clubs.

Be sure to visit

WHEATONS

NEW BOOK AND STATIONERY SHOP FOR

- ☆ Ringbooks and Refill Paper
- ☆ Filing Blocks and Exercise Books
- ☆ Cardboard and Drawing Papers
- ☆ Portable Typewriters
- ☆ Fountain Pens

LARGE BOOK DEPARTMENT ON FIRST FLOOR

Our pleasure to serve the Student

143 FORE STREET, EXETER

TELEPHONE 74121

Operatic Society

St. Lukes

Chairman: Roy Denman

Secretary: Barry Thomas

Treasurer: John Marsden

Representative: Lionel Atherton

Rolle

Jim Bassett

Mary Rishworth

Dinella Jones

Rosemary Head

Two years ago, a music student, Dave Scott, had a brainwave. He thought that a production could be put on in college for the public with students from both Rolle and Lukes, who could act, sing, produce, play in the orchestra etc.

The subsequent production, Gilbert and Sullivan's "Pirates of Penzance" was so successful that it led to the formation of light operatic societies for both colleges.

Last year the society performed Gilbert and Sullivan's "Gondoliers" with a great measure of success. This year we, the society, intend to produce "Iolanthe" another Gilbert and Sullivan opera.

The society was formed under two main aims:

1. That each year as many students as possible (with or without experience) should partake in performances by the society.
2. A fully integrated social life be shared by members whether they come from St. Lukes, Rolle or any other establishment.

If you have enthusiasm and a capacity for work, we would welcome both present and new members to the society.

Motor Club

President: C. King, Esq.

Chairman: D. Haywood

Vice-Chairman: R. Isles

Secretary: G. Middleton

Treasurer: I. Hill

Recently started the Club hopes to expand rapidly this year. During the year rallies and treasure hunts will be held, supplemented by practical lectures, discussions and films on driving and car maintenance

Mountaineering Club

Chairman: D. G. Hopkin

Secretary: T. C. Jones

There is plenty of good climbing within easy reach of Exeter. The Club climbs regularly on the granite of the Dewerstone (near Plymouth) and Hay Tor on Dartmoor. During this last year the Club has twice gone to Bosigran near Land's End, and it has helped in opening up some of the new climbing around Torbay. A very enjoyable long weekend was spent in Snowdonia at Whitsun.

The Music Club

David F. Cross

B. Chadwick

Steffan Nutt

The Music Club exists to sponsor and bring together groups of people to make music both for their own pleasure and that of other people. This implies concerts both inside and outside college of serious music, jazz, folk and pop music. Although a number of concerts have taken place this year, we are convinced that we are still not using anything like the amount of talent that must exist in this college. So if you can sing or play anything, come along to the music club meetings and contact other musicians and form groups to make the kind of music that you want to do—whatever it is. Even if you are not a musician, but just happen to like music, we could do with your ideas and help as well.

Rugby Football Club

Captain: G. Rees

Vice-Captain: R. Codd

Secretary: D. Margetts

Assistant Secretaries: B. Walker, D. Burgess

Treasurer: B. Hawkesley

Assistant Treasurer: B. Borrow

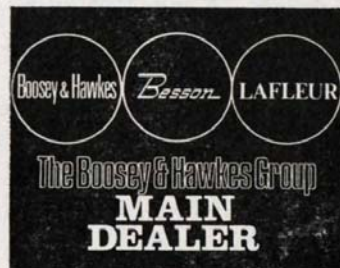
Bill Greenhalgh and Co.

*PIANOS, ORGANS, AND ALL MUSICAL
INSTRUMENTS SPECIALISTS*

REPAIRS, TUNINGS AND TUITION

Special discount on Educational Instruments for Schools

Lists and Quotations Supplied Free



125/129 FORE STREET, EXETER

Phone 58487

The Club is fielding six XV's again this season. A meeting of the whole club, i.e. interested students from the four years, was held on the first Tuesday of term in the main lecture theatre.

Last year the teams in general had one of the best seasons ever—of the 138 games played by the six teams, only 11 were lost. We completed the hat-trick over Loughborough Colleges, and won the Cheltenham Sevens. We also retained the Bridgend Sevens.

The Club tries all ways to be as democratic as possible. If you have any queries or problems concerning rugby, do not hesitate to consult a member of the committee, all of whom will be pleased to hear from you:

Sailing Club

Commodore: H. Wigley, Esq.

Vice-Commodores: J. K. Durrant, Esq., N. Staniland, Esq.

Captain: P. Norris

Secretary: J. S. N. Ablewhite

Assistant Secretary: S. Huntley

Treasurer: M. Tracy

4th Year Rep.: F. Cloke

The main object of the Club is to promote the sport of dinghy racing, and equally important to provide training for beginners.

The club possesses three boats at the moment (three Mayflies), which are based at Starcross Yacht Club.

We are hoping for a large number of new members this year. There are opportunities for those keen to learn to sail, and also facilities for racing at Starcross. This last year we have had a good racing season, and hope to continue to improve our racing standard

at Starcross Yacht Club. The post of first year representative is open to anyone who shows himself keen and genuinely interested in racing, or just learning how to sail.

It cannot be stressed enough that however good or bad a sailor you might be, we are looking for keenness and anyone who is interested in any aspect of sailing should see the assistant secretary, Steve Huntley (F block, Rowancroft Court).

Watch our notice board for further information.

Proposed Science Society

President: Mr. J. K. Durrant, Esq.

Chairman: J. Neal

Secretary: J. S. N. Albewhite

Treasurer: C. Allen

2nd Year Rep.: A. Halliwell

3rd Year Rep.: C. Crocker

A Science Society is hoped to be formed this year. We would like to include in the society not only those students studying science subjects, but any other student who is interested in any topic with which we may be concerned.

Basically the society will organise visits, films and lectures (from university sources). We do not intend that these shall be only science subjects, but include such topics as evolution and even birth control (films will support any such lecture). Visits to local and even distant places of particular interest, will be high on the priority list. If anyone has any suggestions in this line they should contact the secretary. The post of first year representative will be open to anyone who shows himself keen and interested in the aims of the society.

We hope, particularly, to see a large number of new members come to Science Society gatherings, and that you will find them both interesting and education.

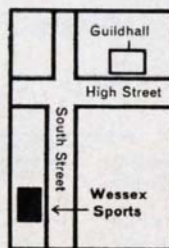
The right equipment for you is at **Wessex Sports**

Good equipment, exactly right for you, is essential for any sporting activity.

At Wessex Sports you can draw on expert advice and experience and then choose from a comprehensive range of the very best equipment.

Whatever your sport, you'll find the best equipment for it at Wessex and knowledgeable people ready to help you.

Wessex Sports is just three minutes walk from the Guildhall.



WESSEX SPORTS

82-83 South Street, Exeter. Tel: 75835

J. J. Norman and Ellery Ltd.

73/75 MAGDALEN ROAD

Tel.: EXETER 58221

and at

82 QUEEN STREET

Tel.: EXETER 58221



THE WINE SHOP ON YOUR DOORSTEP

Full range of

WINES, BEERS AND SPIRITS

Glasses on loan for your Party

WE SUPPLY THE "LUKE INN"

N. U. S. CONCESSIONS

Social Services Club

President: W. O. Rice, Esq., M.A.

Vice-President: C. C. Prothero, Esq., B.Sc.

Chairman: T. P. Jones

Vice-Chairman: R. G. Conway

General Secretary: D. J. B. Hazeldine

Treasurer: R. M. Hamilton

Assistant Secretaries:

Flying Squad: G. Reynolds

Visiting: (vacant)

Entertainments: R. G. Conway

Publicity: M. Little

University Representative: Miss L. Priscott

Saint Loeys' Representatives: Miss R. Stephens, Miss S. Fell

Honorary Advisers: J. J. Landers, Esq., D.P.A., A.I.S.W. (Social Services Officer, Exeter)

B. A. Grimsey, Esq. (Senior Probation Officer, Exeter)

Miss Newton (Health Visitor, Exeter)

The Club was formed five years ago to help meet the Social Welfare needs which seemed to arise in the city but could not be provided for by the state—e.g. loneliness. It is concerned with the needs of people outside and inside college.

There are three sections to the club's activities: Flying Squad (practical), visiting and entertainments.

Flying Squad

This is the practical section which calls upon such skills as gardening, window-cleaning and decorating. At least one residential working weekend is held at Bystock Court, Exmouth, Social Centre, each year. Details from G. Reynolds via the letter rack.

Visiting

This part of the club's activities is confined mainly to old people and comprises answering requests to visit all types of people in particular difficulty. Details from G. Reynolds via the letter rack.

Entertainments

The aim is for small groups to go around occasionally and entertain groups of old people and children. It is hoped to produce a "Variety Show" before Christmas. Details from R. G. Conway via the letter rack.

The vacancy for visiting secretary will soon be filled and posted on the notice board.

Meetings are held from time to time in the term, visits are arranged and a newsletter is published once a term.

All details from the secretary, D. Hazeldine, via the letter rack.

Squash Club

Captain: T. H. L. Usher

Secretary: G. W. Jagers

Treasurer: P. Jackson

The club is a small but flourishing one. It uses the University Courts in their Sports Hall on Tuesday and Sunday evenings. We realise this is not sufficient and are trying to increase the use of these facilities. The Country Club and the Wessex Barracks are other alternatives where members have played in the past. We run two teams both of which are in the second division of the Devon League. With increased support we hope we will have a team in the First Division by the end of next season.

Students Group of the Guild of Teachers of Backward Children

Chairman: C. Mitchell

Secretary: T. P. Jones

Treasurer: (vacant)

Publicity: C. Piggott

The Club was formed in the January of 1968 to provide opportunity for discussion on the needs of backward children. Talks, films and discussions are arranged throughout the year, and there are connections with Special Schools.

The Club is affiliated to the Devon and Cornwall branch of the G.T.B.C., and acts as an agency for those students who wish to join the Guild at the Student Fee of 5/-. Special publications, including the magazine *Forward Trends*, can be obtained by joining.

This is a new and worthwhile venture in a College of Education and students interested in this aspect of education should find the meetings very valuable.

Details from the Secretary via the letter rack.

Swimming Club

Captain: T. Tiffany

Secretary: D. Scott

Treasurer: D. Morris

Now that the college pool is available the club can boast of three training nights per week—something hitherto undreamed of. Water polo will be played each week after Christmas when we hope to field the strongest college side ever, and we are also hope for a good result in the National College Championships where we came third in 1966.

We trust that the excellent support which we built up last season, will continue—full information of fixtures will be posted on the notice board.

Lawn Tennis Club

Captain: P. J. Mornard

Vice-Captain: L. Reading

Secretary: Dai Ellaway

Assistant Secretary: Brian Goodman

Treasurer: Kevin Westbrook

For many seasons now the Club has maintained a high playing standard, and earnt itself a high reputation not only in the West, but

amongst many Clubs, Colleges, and Universities throughout the country. For the last three years especially, the Club has been able to field several county players, and convincingly won the Exeter & District League the season before last. The past season was a frustrating one, with no outstanding freshmen, and the loss of two of our top players meaning that we lacked strength in depth. The 1st Team fought desperately hard to hold on to their League title, but were forced into 3rd place. Consolation can be gained from the fact that the 2nd team were runners-up in their league. Whilst not performing with any credit in the league, the much varied third side had an unbeaten record in friendly matches.

With three sides to run, it means that there is spirited competition for places, but it is Club policy to give as many players as possible match experience, so don't worry too much about your standard—come along and have a go! The big matches of the season are undoubtedly the visits of Millfield and Birmingham University, and the local derby with the University. Due to keen interest, we are running a Winter Singles League, so get in training, and watch the Club board for details.

Table Tennis Club

President: Mr. Bristow

Captain: I. G. Robinson.

Secretary: A. H. Lodge

Treasurer: M. J. Tracey

The Club had a rather poor season last season, and only one of the six teams finished anywhere near the top of its division. However, much more is expected this year and therefore the number of teams were increased to eight. These extra few teams have easily been filled, and the season has started well, with a few wins. In fact the standard of the club has so increased this year that the club is hoping that our teams might win one or two of the divisions in the Exeter and District Table Tennis League, and thereby gain promotion. However, there is always room for improvement so come along to the Cedar Hut Number Fifteen on Wednesday afternoons.

YOUTH SERVICES CLUB

President: W. H. Taylor
Vice-President: D. A. Hurrell, Esq.
G. Smerden
Chairman: A. P. White
Vice-Chairman: C. Neighbour
Secretary: D. A. Blower
Treasurer: T. C. Jones

Social Secretary: S. Niel
Youth Officer: C. Smith
Scout Secretary: C. Uphill

The club offers you, the would be teacher an experience which your college course is unable to cater for. This is the out of school contact with children that will help you to understand and observe childrens behaviour.

The club sends its members out on various activities ranging from general youth club work for perhaps one night a week, to catering for the scouting enthusiast. Such establishments as a maladjusted centre at Cullompton are visited regularly as well as youth clubs in Exeter.

The club also runs in the summer one camp locally in Exmouth for deprived children and also aids in the running of another camp at Walmer on the Kent coast.

Participation in the club's activities is a personal consideration and one may go as often or as seldom as one pleases.

Activities catered for range from canoeing and sailing, to fencing, art, drama and music. In fact anything that will interest the young people concerned is of value to us.

NATIONAL ASSOCIATION OF SCHOOLMASTERS

President: Tony Wenden
Secretary: Brian Curry

To discourse fully on the aims of the N.A.S. in a book of this nature would be out of place. However, a few points regarding the organisa-

tion of the association in this College may be mentioned here. Our aims are simple: to acquaint the student with the realities of the teaching profession, of which he will soon be part, and to give any assistance possible during the training period. There is a system of hostel representatives in College, and non-resident students are also catered for. The facilities provided by the N.A.S. are available to all student members, and the association's journal, "The New Schoolmaster", is distributed every month

The N.A.S. President in St. Luke's for 1968-69 is Tony Wenden and the Secretary is Brian Curry, either of whom are always available for information or help on any matter. By joining us in the N.A.S. you will be helping to secure your future career as a schoolmaster.

NATIONAL UNION OF TEACHERS

President: Ian Hunt

Though not in the strict sense a College society, the N.U.T. feels that it has an important responsibility in College. It tries to keep every member of the College as fully informed as possible of the latest developments in every aspect of education. It tries to help and advise students all the time during their college course as well as helping many students before teaching practice, and trying to outline professional responsibility after leaving college.

There is a danger that a union in College can be something which is impersonal. The N.U.T. in college above all tries to be something that is personal and can be seen, not something that merely exists. To this end every hostel has a representative who is willing to talk impartially to anybody on every educational topic.

The union hopes to organise some meetings during the new academic year, and also to introduce itself through its hostel representatives. The Union notice board is placed outside the Cloisters Coffee Bar, and informs members of any meetings which may be arranged.

226,920
SERVING TEACHERS
belong to the
N. U. T.

The Organisation that Fights for ALL Teachers and gets RESULTS

Join the 43,275 Student Teachers who are also members
and enjoy the free protection and services available from
the Union that Leads

Offices:

Hamilton House, Mabledon Place, London, W.C.1

Exeter - Local Amenities

Pubs

The general standard of "local" in Exeter is quite high and you can get cheap but wholesome local Heavitree and Devenish beers as well as the better-known named varieties almost anywhere in the city. Some pubs, a good majority in fact, serve excellent bar snacks—the Cornish pasties at the Royal Oak in Heavitree and the bar lunch at the Turk's Head next to the Guildhall are famous for miles.

The Locals in Heavitree are excellent; simple but very convivial. Try the 'Rough' at the Windsor Castle in North Street (maximum four pints?) and the shandies at the Horse and Groom. The Ship in Fore Street has some good characters amongst the clientele.

Then there's the city—yes, well, starting at Cathedral Close (where better?) there is The Ship in St. Martin's Lane over which is a cheerful steak-bar and restaurant. The service here is particularly good. There used to be a nice lounge in the Clarence Hotel, but now you have to make do with the cocktail bar and foreigners who don't seem to be particularly good at mixing drinks.

In Castle Street is the famous Hole in the Wall, a Berni Inn—good but usually packed and there's the Long Bar in North Street.

The Greyhound in Sidwell Street, opposite St. Sidwell's Church is quiet, and in the restaurant above you can get an excellent meal for under 10/-; the beer here is cool and rather refreshing. Ask any member of the Rowing club about the Port Royal, but there is yet another nautical inn called The Prospect which is on the Quay—they serve Heavitree bitter, and the bar snacks are excellent, but a bit pricey.

If you are over the other side of the river, perhaps the best 'local' is The Prince Albert next to St. Thomas' Church; that's a 'City' house.

Other good houses include The White Lion in Mary Arches Street, The Chevalier opposite the British Home Stores, The Jolly Porter near St. David's Station and The Victoria opposite the Central Station.

Restaurants and Haute Cuisine

There are good Chinese restaurants in Fore Street and Queen Street, and one Indian (at last!) near the Clock Tower. All are good and reasonably priced. I think that perhaps the best value in town for coffee is to be had in Deller's Cafe, for Lunch at the top of Bobby's where there is a self-service salad room at 8/6d. a time. Go to the Ceylon Tea Centre in Paris Street if you want good tea, but be prepared to pay highly for the cakes. The Clarence Hotel in the Cathedral Close do a very economical 'tea' (for when the parents come!) with sandwiches and all in for 5/-. Watty's, Duffills and Tinley's nearby are similar. The latter tend to get full, hot and rather sweaty towards the end of May... tourists, y'know.

Should you want a 'slap up' meal with absolutely all the trimmings, you can't beat the Buckerell Lodge Hotel's lunch at 13/6d. and the Imperial's dinner at 15/6d. During the day, reliable snacks can be had from the Wimpey bar in Paris Street, the Ploughboy in the Princesshay, good old Joe Lyons in High Street and the Devon Cafeteria on the 'bus station.

For those with a car

Tea, any afternoon, with home-baked bread and home-made preserves at The Old Mill in nearby Ide is perhaps the best 4/-'s worth anywhere in the west: it tends to be crowded on Sundays, though. The fame of the Devon and Dartmoor Inn has also spread far and wide. Nearer, there are two very nice motels on the outer bypass, both comfortable and inexpensive.

To see a really pleasant pub, it might be an education to take the girlfriend to the Swan's Nest at Exminster where the surroundings are genuinely antique, the flowers real and the ice effective. I have never had to tolerate tepid beer here, which says a lot for it in this area—coffee is marvellous, served in a wineglass, with half an inch of cream on top and an "After Eight" wafer mint with it.

General Information

UNION OFFICE/STATIONERY SHOP:

Permanent Secretary: Mrs. J. Short.

Stationery Shop Assistant: Mrs. W. Short.

Weekdays 9.00 a.m.—2.30 p.m.

COFFEE BAR

Weekdays 10.00 a.m.—2 p.m.

(Mon., Tues., Thurs., Fri: Cafeteria, 10.30 a.m.—11.15 a.m.)

Saturday 10.00 a.m.—12 noon.

COLLEGE BAR:

Mon., Tues., Thurs., Fri. 12–2 p.m., 7.30 p.m.—10.30 p.m.

Wednesday, Saturday 4.30 p.m.—10.30 p.m.

Sunday 12 noon—12.50 p.m.

LIBRARY:

Librarian: Mrs. W. M. Molland, M.A. *Library Proctor:* R. Butterworth.

Weekdays: 9.00 a.m.—10 p.m.

(Tuesdays 9.30 a.m.—10 p.m.)

Saturday 9.00 a.m.—12 noon.

CITY LIBRARY:

Membership available to students upon signature of Personal Tutor.

Lending Library—Reference Library

Weekdays 10.00 a.m.—8.00 p.m.

Wednesday 10.00 a.m.—6.00 p.m.

Saturday 9.30 a.m.—6.00 p.m.

(Institute Library, Gandy Street, also available to Students.)

FORREST CAR-HIRE

10% discount to all Students with Union Cards.

Telephone No.: 77077.

TELEPHONE NUMBERS:

College Office	59384
Resident Warden :	59385
Chaplain :	59386
Matron	59388
British Rail	77277
Bus Station	56231
Pitts Bookshop	73181
Exetax Ltd.	74942
B.R.S.	71224
University	75803
Rolle J.C.R.	952/4945
St. Loyes	73555
R.O.E.	77054

POSTAL:

G.P.O. Main Office, Bedford Street.

Weekdays 9.00 a.m.—5.30 p.m.

Saturdays 9.00 a.m.—4.30 p.m.

First Post reaches College at 8.15 a.m.; second post at 12.00 noon.

(Mail is distributed via letter rack.) Parcels, telegrams and registered mail are handled by the College office.

Heavitree Road collections:

8.45 a.m.

12.15 p.m.

3.15 p.m.

6.15 p.m.

(5.45 p.m.—Sundays only).

TELEVISION FACILITIES

General—Common Room.

Hostel—T.V. Sets.

NEWSPAPERS:

Newspapers are available daily in the Common Room and the Library. Students are asked to take care in their treatment of them. Last year the number had to be reduced because of damage and theft, and if this trend continues, all papers and periodicals will be cancelled.

TERM DATES:

Michaelmas Term: 23rd September—12th December

Lent Term: 7th January—27th March

Summer Term: 16th April—27th June.

CONSTITUTION OF THE STUDENTS' COUNCIL

1. **Definition:** The Students' Council will be the elected representatives of the Student Union of St. Luke's College. The Student Union consists of all Students who attended the College for a one, two, three or four year course. It includes members of post-graduate and supplementary courses and any other courses which may come into existence.
2. **Aim:** The aim of the Council is to represent the Student Union in:
 - (1) their collective relations with the Principal and Staff;
 - (2) the regulation of the Union's affairs which are referred to the Council by the Principal and Students; and
 - (3) the representation of the Student Union locally, regionally and nationally.
3. **Composition of the Students' Council:**
 - A. **The Council shall consist of the following voting members:**
 - i. *Elected Members.*
 - (a) President.

- (b) Two Vice-Presidents.
- (c) One fourth year representative.
- (d) Five third year representatives.
- (e) Five second year representatives.
- (f) Five first year representatives.
- (g) One one-year representative.

N.B. Variations in the composition of College Courses will occasionally necessitate reconsideration of the categories and the numbers of elected representatives.

- ii. The following shall be elected by Council, if not already members, and be voting members of Council.
 - (a) The Social Committee Secretary.
 - (b) Common Room Committee Secretary.
 - (c) N.U.S. Committee Secretary.
 - (d) Bar Committee Secretary.
 - (e) College Clubs Committee Secretary.
 - (f) Publicity Committee Secretary.
 - (g) Stationery Shop Committee Secretary.
- B. **The Council shall consist of the following non-voting members:**
 - iii. *Co-opted Members.* A maximum of three other persons to be co-opted if necessary.
 - iv. *Committee Chairman:* All Council Committee Chairmen (and in their absence Secretaries) who are not members of Council, have the right to speak on all subjects relevant to their Committees.
4. **The Executive:** There shall be an Executive Committee consisting of the following:
 - (a) The President.
 - (b) The two Vice-Presidents.
 - (c) The Secretary of the Council.
 - (d) The Student Treasurer.
 - (e) One other member of Council.

The Committee is responsible for putting collective proposals including finance recommendations before Council and carrying out tasks delegated by Council.

The Committee will have regular meetings with the Principal, the Vice-Principal and resident Tutors. Proposals for the setting up of a College Committee are being examined.

5. Meetings:

- (a) The duration of the Council year runs from August 1st until July 31st.
- (b) At its first meeting the Council decided on the regularity of the Council meetings for the ensuing year. Any alteration to this timetable shall be notified to all Councillors by the Chairman at least 72 hours before the meeting is due. Items for inclusion on the agenda of an ordinary meeting must be handed to the Chairman in writing not less than 72 hours prior to the meeting. The agenda of each meeting shall be published at least 24 hours before the meeting. An extra-ordinary meeting shall be convened by the Chairman and Secretary, who shall post notice of the meeting at least 48 hours before the date of the meeting, together with the agenda which the extra-ordinary meeting is called to discuss.
- (c) **Quorum** One half of the voting members of the Council together with the Chairman, shall be necessary to form a quorum.
- (d) **Majority**: A simple majority of those present will be necessary for all Council decisions with the exception of financial motions, alterations to the Constitution and Standing Orders. Finance motions require 51% of the whole Council to vote in favour; Constitution alterations require 75% of the whole Council to vote in favour; alterations to Standing Orders require two-thirds of the

members present to vote in favour. The Chairman will only cast a vote in the event of an indecisive ballot.

- (e) **Minutes**: The Secretary will keep Minutes of all meetings held. The Minutes will, after each meeting, be presented to the Principal for his consideration and comments. The report of all meetings shall be published within 72 hours of the meeting and distributed to the Principal, the Vice-Principal, resident staff, Councillors, Council and hostel notice boards, and to those who request copies.
- (f) **Resignations**: Any member of Council absent from two consecutive meetings without sending a suitable letter of apology containing an adequate reason, or without adequate excuse, shall be asked to resign, and an election held to find a successor.

6. Elections:

- (a) **Voting**: Voting in all elections is by means of a secret ballot. Special arrangements can be made for those unable to vote if they contact the President beforehand. No voting by proxy will be permitted. Each voter is permitted one vote for every position to be filled.
- (b) **President**: Elections for this post will take place on the third Saturday of the Summer Term. Nominations proposed, seconded and agreed, will be accepted by the serving President. Such nominations must be received by him by the second Saturday of the Summer Term, and must be accompanied by a photograph of the nominated Student. The list together with the photograph of the candidates will be displayed on the President's noticeboard for at least five days prior to the election. The election will be conducted by the President with the assistance of a committee of Students in their final year. A roll of electors will be kept. All Students at College shall be entitled to

vote in this election. The votes cast will be counted by the President and his committee with the Principal or a delegate appointed by him acting as scrutineer. The candidate with the highest number of points shall be declared President.

(c) **Vice-Presidents:** Elections for these posts will take place on the fifth Saturday of the Summer Term. Nominations proposed, seconded and agreed, will be accepted by the serving President. Such nominations must be received by the fourth Saturday of term, and must be accompanied by a photograph of the nominated Student. The list, together with the photographs of the candidates will be displayed on the Council noticeboard for at least five days prior to the election. The election will be conducted by the President with the assistance of a committee of Students in their final year. A roll of electors will be kept. All Students at College shall be entitled to vote in this election. Each Student may vote for two of the candidates. The votes cast in this election will be counted by the President and his committee with the Principal or a delegate appointed by him, acting as scrutineer.

(d) **Fourth Year Representative:** There will be one fourth year representative who will be elected by all Students returning for their fourth year. Nominations will be received on a list displayed on the Council's noticeboard. This list will close on the sixth Saturday of the Summer Term, and the election will take place in the seventh week. Photographs of the candidates should be displayed for at least five days prior to the election of any representative of the Students Council. Should the seventh week be in the Whitsun holiday, the election will take place in the following week. Each Student returning to the College for a fourth year will be entitled to one vote. This election will

be conducted by the President, or persons nominated by him. The name of the elected Student will be presented to the Principal.

(e) **Third Year Representatives:** There will be five third year representatives who will be elected by all Students returning for their third year. Nominations will be received on a list displayed on the Council's noticeboard. This list will close on the sixth Saturday of the Summer Term, and the election will take place in the seventh week. Photographs of the candidates should be displayed for at least five days prior to the election of any representative of the Students' Council. Should the seventh week be in the Whitsun holiday, the election will take place in the following week. Each Student returning to the College for a third year will be entitled to five votes. This election will be conducted by the President, or persons nominated by him. A list of the elected Students will be presented to the Principal.

(f) **Second Year Representatives:** There will be five second year representatives who will be elected by Students returning to College for their second year. Nominations will be received on a list displayed on the Council's noticeboard. This list will close on the sixth Saturday of the Summer Term, and the election will take place in the seventh week. Photographs of the candidates should be displayed for at least five days prior to the election of any representative to the Students' Council. Should the week fall in the Whitsun holiday, the election will take place in the following week. Each Student returning to the College for his second year will be entitled to five votes. This election will be conducted by the President or persons nominated by him. A list of the elected Students will be presented to the Principal.

(g) **Supplementary and Post-graduate and One Year Students:**

There will be one representative on the Council who will represent the combined supplementary courses and the one-year and post-graduate courses. Nominations will be received by the Secretary on the fifth Saturday of the Autumn Term, and elections by members of the above courses will take place in the sixth week. Photographs of the candidates should be displayed for at least five days prior to the election of any representative to the Students' Council. The name of the elected Student will be presented to the Principal.

(h) **First Year Representatives:** There will be five first year representatives who will be elected by all Students in their first year of a two or three year Course. Nominations will be received on the list displayed on the Council noticeboard and the election will take place during the last three weeks of the Autumn Term. Photographs of the candidates should be displayed for at least five days prior to the election of any representatives to the Students' Council. Each Student will have five votes and the names of the elected Students will be presented to the Principal.

(i) **The Executive** At the first meeting of the newly-elected Council, they shall elect from within Council a Secretary, a Student Treasurer and one other member of Council to serve on the Executive Committee.

(j) In the event of a tie for the final place in the election of any member of the Council, there shall be a further election between the candidates who tie to decide which candidate shall fill the vacancy.

7. **Discipline:**

(a) **College Discipline** The Principal has delegated to the Council, powers to deal with major acts of anti-social

behaviour which are detrimental to the good name of the College. Sanctions approved by the Principal may be imposed. There shall be a disciplinary Sub-Committee of the Council, consisting of:

- (i) the President and two Vice-Presidents.
- (ii) three members of Council, elected by Council at the beginning of the academic year; Council may review the position of one or all these three at any time.
- (iii) in carrying out its investigations the Committee may call in any witnesses to make written statements and other persons who may be able to give relevant information.
- (iv) a Student accused of anti-social behaviour shall be brought before the disciplinary sub-committee. Notice of such an accusation must be delivered to the alleged offender(s) within three days of his alleged offence coming to the notice of the sub-committee. Any sanctions imposed must have at least five members voting in favour. They must be sanctioned by the President and placed on the Council noticeboard. The Student(s) concerned shall be informed by the Chairman of the offences for which sanctions have been imposed upon him.
- (v) any Student brought before the Disciplinary Sub-Committee has the right of appeal to the Principal.

N.B. The Committee should also investigate the conditions of any bans or sanctions imposed on St. Luke's Students by other organisations, and report fully, their findings. Representations may be made to the organisation concerned, as a result.

(b) **Hostel Discipline:** The Students' Council has no responsibility for discipline within a hostel or residential unit. Resident tutors are responsible to the Principal for the

conduct of their Hostels. Proctors with residential duties are responsible to their resident tutors.

- (c) The Students' Council shall be empowered, in the event of a co-opted member being found guilty of anti-social behaviour to remove him from membership of the Council
- (d) In the event of an elected member being found culpable of anti-social behaviour the Students' Council shall be empowered to convene a meeting with the elected member, at which the confidence of the electorate will be assessed.
A quorum shall consist of at least 51% of the electorate.
A vote of no confidence shall require a majority of two-thirds of the votes cast. In the event of a vote of no an election will be held within fourteen days.

8. Finance:

- (a) The Department of Education and Science recognises that the Students' Subscription should be paid as part of the tuition fee, and makes a per capita grant for this purpose. If it estimates that the Ministry Grant will not meet expenses the Students' Council will agree an additional sum to be paid by each Student to supplement the Ministry's grant.
- (b) The Special Finance Committee, which will consist of the President, the Vice-Presidents, the Treasurer, the immediate past Treasurer and 2 other members of Council, elected by Council to make a total of seven members. For this Committee a quorum shall consist of four members, including the President and two members of the Executive, they will allocate the total fund in consultation with the officials of College Clubs and Societies. One month before the end of the Summer Term, the officials of College Clubs and Societies will present to the Treasurer of the Council, details of their financial requirements for the following

academic year. The total allocation will be met by the Ministry grant firstly, and supplemented by the Annual Students' Subscription. Any surplus of the Students' Subscription will be administered by the Students' Council Executive Committee.

- (c) The Council shall review the individual Students' subscription during the course of the Summer Term.
- (d) The Students' Council Executive Committee will consider applications for financial assistance from College Clubs and Societies, and submit their recommendations to the Council. Recommendations of the Executive Committee will only be implemented if 51% of the whole Council votes in favour.
- (e) All Clubs and Societies drawing money from the fund will be responsible for keeping accounts of all their income/ expenditure according to a standardised system, and for obtaining and preserving receipts. Account Books must be presented to the Students' Council or its Executive Committee on demand. Annual auditing of these accounts will be carried out by persons appointed by the President and Treasurer before the end of the academic year. Only the Club officials accredited by the Club Treasurer are permitted to withdraw funds.
All Clubs and Societies receiving an allocation must abide by the conditions laid down by the Special Finance Committee and the "Directives to Club Secretaries". Such conditions shall be approved by Council and renewed annually
- (f) The President and the Student Treasurer are authorised to withdraw from the Students' Recreation Fund, at any one time, a sum not in excess of £2 without obtaining the approval of Council, in order to pay for Presidential and Council expenditure.

- (g) The Student Treasurer will maintain contact with the Honorary Treasurer in order to be informed regularly of the financial state of the total fund.

9. **Sub-Committees:**

- (a) **N.U.S. Committee:** The N.U.S. Committee consists of a Chairman, appointed by the President, who is a member of the Executive, a Secretary who is a member of Council, and other members appointed by the Chairman. The Committee is responsible to Council for carrying out N.U.S. Administrative work.
- (b) **Social Committee:** The Social Committee consists of a Chairman, appointed by the President, who is a member of the Executive, a Secretary who is a member of Council, and other members appointed by the Chairman and representing all years. The Committee within the provisions of the Social Activities Fund is responsible for the social activities arranged for the Student Union.
- (c) **Common Room Committee:** The Council is responsible to the Principal for the running of the College Common Rooms. The Common Room Committee is responsible for the day-to-day running of the Common Rooms and carrying out the provisions laid down by the Council and the Constitution of the College Club. The Committee consists of a Chairman, appointed by the President, who is a member of the Executive, a Secretary who is a member of the Council, and six members appointed by the Chairman.
Hostel Common Rooms are not included in this provision.
- (d) **Gang Show Committee:** This Committee will be responsible to the Council for the production of the Gang Show. The Committee will be appointed by the Council after the retirement of the previous committee.

It will consist of a Chairman, a Producer and four other members. The members shall be second or third year Students. They need not be members of the Council.

- (e) **Bar Committee:** The Bar Committee shall be responsible for the running of the College Bar, within the provisions laid down by the Council and Constitution of the College Club. The Bar Committee shall consist of the following members: The Chairman, appointed by the Union President, who shall be a member of the Executive; the Secretary, who shall be elected by Council and serve on Council; and two members appointed by the Chairman and Secretary.
- (g) **College Clubs' Committee:** This Committee will be responsible to Council for carrying out general administrative work connected with the running of College Clubs. The Committee shall have a Chairman, appointed by the President, who is a member of the Executive; a Secretary who is a member of Council, and six members appointed by the Chairman.
- (h) **Publicity Committee:** To be responsible for all publicity of Council and its Sub-Committees.
The Committee shall consist of a Chairman, who shall be the Secretary of Council; a Secretary who shall be elected by Council and serve on Council; and other members appointed by the Chairman.
Any publication, prepared by and made available to the Student population should present an informed and impersonal view, this to be at the discretion of the Editor. Views expressed in any such publication in no way reflect the view of Student's Council unless otherwise stated.
- (h) **Stationery Shop Committee:** To be responsible to Council for the general running and finance of the Student

Stationery Shop. The Committee shall consist of a Chairman, appointed by the President, who is a member of the Executive, a Secretary, who shall be elected by Council and serve on Council, and other members, appointed by the Chairman.

- (i) The Students' Council shall be empowered to remove from office any appointed person.
- (j) The President is an *ex officio* member of all sub-committees.

10. **Standing Orders:** Standing Orders as to methods of procedure may be decided upon by a two-thirds majority of the Council at an ordinary meeting. A similar majority is required to alter or suspend a Standing Order.

11. **Alterations to the Constitution:** Any proposals for alteration to the Constitution must be approved by three-quarters of the whole Council, at an extra-ordinary meeting convened for the purpose. A proposed amendment must be submitted to the Principal. Any proposal submitted and failing to get the necessary majority, or the Principal's sanction may not be reconsidered during the current academic year.

Notes



**Lady Clarissa
makes certain
concessions
The Hon Miss Prue
does not—
But take our magazines*
And our fabulous Scheme
Will concede you half price on the lot!**

*Teachers World Child Education Pictorial Education
Technical Education La France Art & Craft Education
Au Plaisir Music Teacher Woodworker

For full details of our Concession Scheme see your Union
notice board or drop us a line

Evans Montague House Russell Square London WC1



No bank charges

whilst you're a student.

That's just one way in which
we'll help you.

This is Westminster Bank's own way of saying "Welcome!" to you. And to all full-time students at universities, technical colleges, art schools and similar institutions.

The Bank's offer is simply this. For as long as you are a full-time student, you will not normally have to pay the charges that the Bank makes for handling a current account.

All we ask is that you keep your account in credit – and not make excessive use of your cheque book (e.g., for small payments that could just as conveniently be made in cash).

It's quick and easy to open a Westminster account. And it will serve you in more ways than there is room to describe here. We suggest you call on your nearest branch – or fill in the coupon below.

We'll help you . . . in all sorts of ways. Find out more by sending us the coupon now, and we'll send you our free booklet USING YOUR BANK.
To: Westminster Bank Limited, 41 Lothbury, London, E.C.2

NAME

ADDRESS

.....

Westminster We'll Bank

**help
you**

