

Publicity Acknowledgments...

St Luke's College would like to thank the following organisations and individuals for their help in making today such a memorable one.

Sydney Lee (Exeter) Limited, Printers, for their production of this programme and the game tickets. In particular, we would like to thank Tony Lee for his experienced advice throughout the organisation of the game.

H. J. Chapman & Co. Limited, Ledbury, for their supply of stationery.

Bukta Limited, for providing shirts, shorts and socks for the International XV.

Clarks Shoes Limited.

Exports (Exeter), for providing the ball boys with track suits, and for providing the commemorative rugby sweaters.

Towa & Country Productions Limited, for providing films, free of charge, for St Luke's to use in money raising schemes.

Waltham Forest Seaside Wind Band—conductor Robin Winbroad—for playing at today's game. We are honoured to have them with us today as other engagements have included performances at the Royal Albert Hall and the Festival Hall. Thank you Cliff Rouse for making this possible.

Don Rutherford (St Luke's 1961-64), Technical Administrator to R.F.U., for gathering together such a distinguished International Team. Thank you Don and all the players who have honoured us with their presence.

Rev. Dr F. W. T. Fyler, for the pictures and historical facts found within this programme. Thank you Fred for all the invaluable assistance you have provided.

Derek Wyatt, for continual help towards publicity, sponsorship and Hilton arrangements.

June Godwin and Staff, for their abounding enthusiasm and extreme efficiency in the print unit at St Luke's.

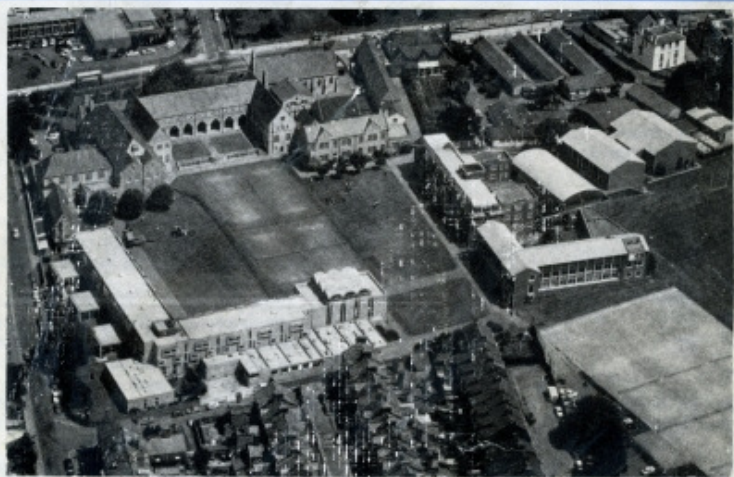
National Westminster Bank, for their financial contribution to the day's events.



ST LUKE'S
COLLEGE
1839-1978



ST LUKE'S
SCHOOL OF
EDUCATION,
EXETER
UNIVERSITY,
SEPT. 1978



GREENSLADES TOURS ➤
a NATIONAL bus company

Hire a Coach...

You're on to a good thing,

when you charter a coach

For party or group travel you cannot beat coaches because, quite simply, you can go direct to any place within reach of the Queen's Highway. It's the cheapest, friendliest way of moving people—the ideal form of door-to-door travel.

MAY WE QUOTE YOU FOR PRIVATE PARTY TRAVEL
29 TO 53-SEATER COACHES AVAILABLE FOR HIRE

Contact Private Hire Dept, Greenslades Tours Ltd, 29 Paris Street, Exeter. Telephone 74103



1860-1978

SAINT LUKE'S COLLEGE
V
AN INTERNATIONAL XV



Twickenham

Wednesday March 22nd 1978

K.O. 3.00 p.m.
Programme 40p.

A Tribute...

In September 1978, St Luke's College will become the School of Education of Exeter University, and today's celebration is one of a series which will commemorate the final year of St Luke's. However, today's event is only possible because of the remarkable astuteness of James L. Smeall. His student recruiting strategy and passion for rugby football has resulted in the national and international reputation which the College enjoys today. Welcome sir, to this final pageant, the seeds of which were sown during your twenty-seven years as Principal. On behalf of the generations of St Luke's students, thank you for giving the College its magnificent identity and for the personal contribution to our education. We hope that you will be proud of the tribute rugby football is paying to your old College and that your day is an extremely happy one.

Today's Special Meaning...

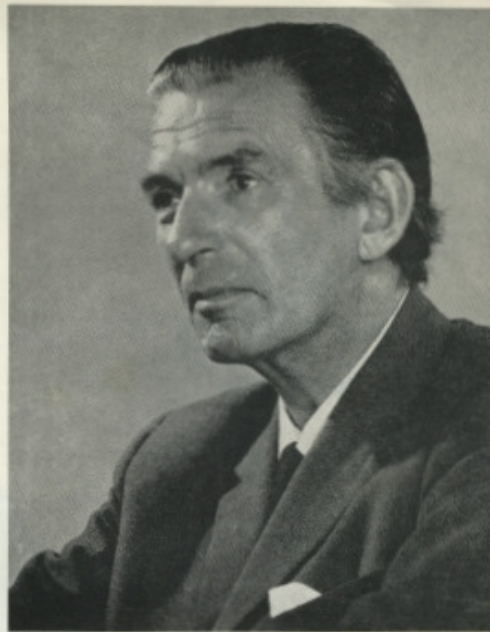
Today is essentially one of celebration and remembrance, and is the catalyst which will enable us to re-live the moments of the past years which have a special meaning to each one of us. Today, past and present students will share experiences, and link the generations of St Luke's men and women over the past seventy years. Today is a time for happy reminiscing, and yet a time for nostalgia. It is a time for each one of us to be proud in the knowledge that we were educated in an environment which has gained so much respect in the field of education. Today we will realise that the values we were taught at St Luke's have been perpetuated right up to the last minute. In particular, today will be a collective time for us to remember the significant effect the game of rugby football has had upon our lives. Today, we will be reminded of College personalities—not just James Smeall, but distinguished 'old boys' like Sir Stanley Rous or Bill Campbell, whose incredible energy and high standards moulded generations of excellent physical educationalists.

Thank you Bill, for those rigorous years and for your driving enthusiasm. Thank you also to our President and Fixture Secretary, Alan Hodgson, who has been so loyal and gentlemanly in all his efforts to help maintain and raise the standard of our fixture list. We hope Alan, that in this, your final year, you will leave with many happy memories.

Today, past students can be proud of the present generation of staff and students who have maintained the traditions to the end. The effect of the final year has been to unify departments and today's events would have been financially embarrassing had it not been for the untiring money raising events of all the students, coupled with magnificent support from the students' union. Thank you, everyone, for your sponsored runs, jazz concert, new faces, film evening, pontoon flutters and, of course, for selling tickets. I hope that today is quite 'unbelievable' for you!

THE RUGBY FOOTBALL UNION

St Luke's College would like to record a sincere thank you to the Rugby Football Union, for allowing them to use Twickenham for this great occasion. We are very honoured to be allowed to play at the National Stadium and you may be assured that in the future—as Exeter University—we will still bring credit to the game of rugby football. Thank you, gentlemen, for your kindness and support.



J. L. Smeall, Esq., J.P., M.A., Principal, 1945-72

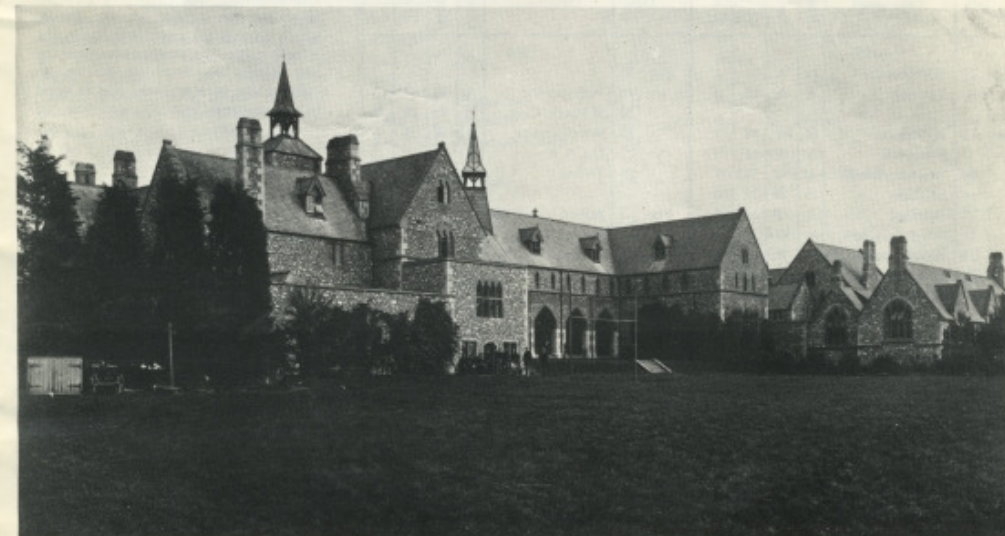
A most sincere thank you is also given to our present Principal, John C. Dancy, M.A., for his continual support. Throughout a most difficult year, his continual advice and anxious glances have been a great motivation for many of us, and greatly appreciated. Thank you also to our governing body at St Luke's who, through the mists of emotion, gave generous financial assistance for this occasion.

Finally, today is one of joy at meeting so many past friends in an environment for which St Luke's has been known so well. Thank you to all of you who made the journey to share in this final celebration. We hope that you have a day to remember, and will always cherish the memories of your days at St Luke's College.



THE TEAM, 1891

Back Row: A. J. Dingle (Linesman), Kilfin, Willot, Dr Dangar (Principal), E. Guy, G. Millet, T. Ell, C. Cooper, Archer, E. Smale (Hon. Sec.)
Middle Row: C. Julian, C. Joslin, T. Boyd, T. Price (Capt.), E. W. Ebdon, J. Wright
Front Row: T. Westlake, T. Zeal, J. Furgison, W. Warren



COLLEGE GROUNDS, 1897



1953-54 RECORD BREAKERS—1,000 points plus

Back Row: D. Glyn John, Gordon Wells, M. J. Smith, Terry Thomas, Don Devereaux, D. Small, D. W. Hill, Gareth Griffiths
Middle Row: Mervyn Joseph, A. Williams, Bryn Meredith, M. Macho (Capt.), I. Zaidman, G. R. Ridd, H. Davies
Front Row: D. B. Rees, John Huins, Malcolm Greenhow, John Morgan

FIRST FIFTEEN

Date	Opponents	Ground	Result	Points		Date	Opponents	Ground	Result	Points		
				For	Agt					For	Agt	
1953						1954						
Sept. 26	Withycombe	H	W	14	3	Jan. 13						
30	Taunton	A	W	16	3	16	Withycombe	A	W	44	0	
Oct. 3	Wellington	H	W	48	3	20	St Paul's, Chelt.	H	W	49	0	
	Sidmouth	A	W	11	3	23	Wiveliscombe	A	W	31	6	
	Newton Abbot	A	W	37	8	27	U.C.S.W.	A	C			
	Brixham	H	W	22	0	30	Tiverton	A	C			
	Bideford	A	W	14	5	Feb. 3	Bristol University	A	C			
	Devonport Serv.	A	W	22	6		6	Newton Abbot	H	C		
	Wiveliscombe	H	W	25	0		10	St Paul's, Chelt.	H	C		
	Salcombe	A	W	49	3		13	Exmouth	A	W	18	0
	Exeter	A	W	17	3		17	U.C.S.W.	A	W	31	10
Nov. 4	Plymouth Albion	A	W	14	0	20	St Ives	A	W	5	0	
	Bridgwater	A	D	3	3	24	R.N.E.C.	A	W	45	6	
	Crediton	H	W	47	3	27	Honiton	A	W	55	0	
	Bristol University	H	W	49	6	Mar. 3	W'ston-s'p'r-M're	A	W	22	0	
	Bideford	H	W	27	0		6	Honiton	H	W	67	0
	R.N.E.C.	H	W	34	3		10	Exmouth	H	W	18	0
	Wellington	A	W	41	3		13	Penryn	H	W	11	3
	U.C.S.W.	H	W	22	3		17	Devonport Ser.	H	W	25	0
	28	Tiverton	H	W	50	0	20	Camborne	W	14	3	
Dec. 2	Brixham	A	W	15	3	23	Sheffield Univ.	H	C			
	Penryn	A	W	3	0	24	Paignton	A	W	22	0	
	9					April 24	Torquay	A	C			

St. Luke's V

Unfortunately, the curtain is now to close on this annual historic fixture which arouses the same passions as the Varsity game. The meetings between the two colleges have been described as 'the culmination of everything that is good in college rugby football', and now our

(St. Luke's score first)

2nd January 1959	W	12—3
24th February 1960	W	17—3
22nd February 1961	W	9—8
14th February 1962	L	3—11
20th February 1963	L	13—17
19th February 1964	W	8—6
24th February 1965	L	6—16
23rd February 1966	W	13—3
22nd February 1967	W	9—3
21st February 1968	W	12—9



THE TEAM, 1977-78

Back Row: R. Reynolds, P. Breakwell, M. Miller, J. Patching, R. Price, J. Brigden
Third Row: Alan Hudson (President), J. Everett, P. Rees, P. Fladgate, B. Redko, B. Kenny, K. Collins, J. Butcher, M. Underwood (Coach)
Second Row: J. Desborough, B. Howarth, A. Keep (Club Capt.), G. Walters (1st XV Capt.), M. Wise (1st XV Vice-Capt.), A. Wolstenholme, D. Brooks
Front Row: J. Smith, P. Larkin, J. Nicholls, L. Yandell, H. Lewis, R. Jones

Loughborough

hope is that we will continue to meet in the U.A.U. Championships. The results indicate that St Luke's have won the series and are very proud that, as 'David', they have managed to disturb 'Goliath's' den. Thank you Loughborough for the quality of rugby football you have shared with us, and we look forward to further encounters in the U.A.U. environment.

St Luke's Won 10 Loughborough Won 7
2 Drawn 1 Cancelled

15th February 1969	W	14—6
21st February 1970	W	11—9
20th February 1971	L	3—24
12th February 1972	L	9—10
17th February 1973	D	10—10
9th February 1974	W	11—7
8th February 1975	L	9—19
14th February 1976	D	7—7
23rd February 1977	L	3—24
15 February 1978	Cancelled	

FIRST FIFTEEN

1977			1978		
September			January		
Thurs. 29	Torquay	A	Tues. 10		
			Wed. 11		
October			Sat. 14	Redruth	H
Sat. 1	Esher	A	Wed. 18		
Wed. 5			Sat. 21	Lydney	A
Sat. 8	Cheltenham	H	Wed. 25		
Wed. 12	Gloucester	A	Sat. 28	Penryn	H
Sat. 15	Plymouth Albion	H			
Wed. 19			February		
Sat. 22	Taunton	A	Wed. 1	Plymouth Albion	A
Wed. 26			Sat. 4		
Sat. 29	Bedford	A	Wed. 8		
			Sat. 11		
November			Wed. 15		
Wed. 2	Bristol	A	Sat. 18	Weston-super-Mare	H
Sat. 5	Wasps	H	Wed. 22	Loughborough Colleges (Gloucester) 7 p.m.	
Wed. 9			Sat. 25	Newbridge	A
Sat. 12	Bath	A			
Wed. 16			March		
Sat. 19	Exeter	H	Wed. 1		
Wed. 23			Sun. 5	Cross Keys	A
Sat. 26	Rosslyn Park	A	Wed. 8		
Wed. 30			Sat. 11	Clifton	H
			Wed. 15	Torquay	A
December			Sat. 18	Streatham	A
Sat. 3	Clifton	A	Tues. 21	Exeter	A
Wed. 7			Sat. 25		
Sat. 10			Mon. 27	Llanelli	A
Wed. 14			Tues. 28	Penarth	A

SAINT LUKE'S COLLEGE v INTERNATIONAL XV.



11. G. WALTERS
(Captain)

12. J. DESBOROUGH

13. D. BROOKS

15. R. PRICE

10. A. WATKINS



14. R. REYNOLDS



REFeree

R. QUITTEN TON, London

TOUCH JUDGES

M. WRIGHT, D.R.R.S.

C. HARDING, D.R.R.S.

REPLACEMENTS

P. REES

J. HURLEY



14. D. WYATT
St Luke's, Bedford,
England

13. T. G. R. DAVIES
Cardiff, Wales,
British Lions

12. M. SWAIN
St Luke's, Moseley,
Wales B, Barbarians

15. F. WILSON
St Luke's, C.I.T.M.S.,
Ireland

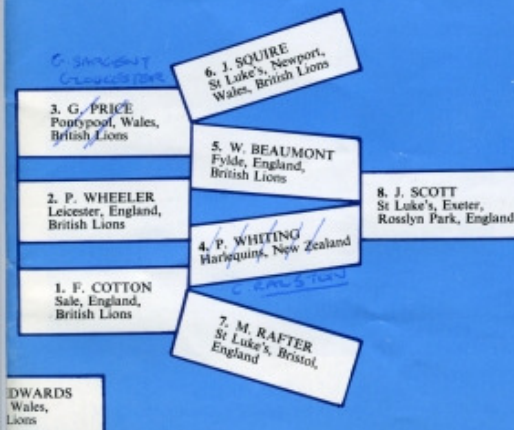
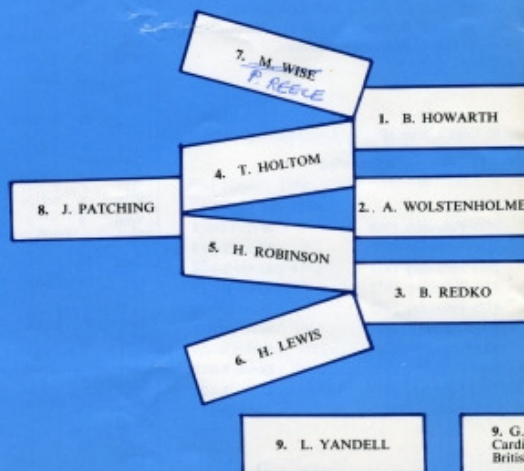
REPLACEMENTS

TERRY CHARLES, St Luke's, Cardiff

N. DENNETT



11. M. SLEMEN
St Luke's, Liverpool
England





Let Midland Bank tackle your money problems

Get the strength of Midland Bank
behind you when you tackle those constant bills.
Give your finances a little extra push with
advice from your Midland Manager.
Convert your savings into real capital with the steady
co-operation of our team at the Midland.
Look forward to a winning season with the
Midland to back you.

Midland Bank
A GREAT BRITISH BANK



1957 MIDDLESEX SEVENS WINNERS

D. R. Main, W. Williams, J. Tasker, B. Sparks (Capt.)
G. G. Luke, B. E. Jones, K. J. Bartlett



1969 MIDDLESEX SEVENS WINNERS

Air Commodore G. C. Lamb, C.B.E., A.F.C. (Referee), Ian Morgan, John Vaughan, John Warren, Peter Knight, F. B. Lovis (Touch Judge).
Alan Porter, Ray Codd, Bob Williams

The College Years...

Your letters have repeatedly referred to the College years as some of the happiest in your life. Perhaps today's events will revive some of the humorous anecdotes and songs which have been passed down from generation to generation. Over the years, the songs have changed in syncopation, and the stories have become exaggerated, but both have helped to maintain the old traditions.

It is worth more than a smile when we hear critics condemning modern youth, for a brief look at history will more than verify that in spite of St Luke's being a Christian establishment, it was far from being full of God's angels.

The following should stimulate the memories:

1. Who sent 100 day-old chicks to the resident tutor in Rowancroft?
2. Which group of students stole a double decker bus tyre, rolled it down the stairs at Rowancroft and broke the door at the bottom?
3. Which student, dressed formally, hired a Rolls Royce and chauffeur and asked the management to send them to pick up Lord Rowancroft?
4. Which tutor fell ill as a result of these incidents?
5. Who bored a hole in the groin area of the Buller Statue—it appeared that the horse had bladder trouble for a week?
6. Yet another rag week stunt—which group of third-year students managed the incredible feat of removing a canon from the Rougemont, and getting it to the front of the College without being spotted?
7. Which student ran a marathon the day after 'chomping' through a vase of daffodils in the Ship Inn?
8. And talking of flowers—who won the tulip eating contest in Penryn just before the coach left at midnight? We're still wondering if the gardener of the mansion they were taken from realised that humans had savaged his stock, and that they hadn't been stolen for the W.I. flower show!
9. Which tutor regularly leaves teaching practice supervision early in order to pick up home-made cakes and sausages before returning to college?
10. Which year sent the head of the P.E. Department a valentine card asking for a course in Testes and Measurements?
11. Which student switched the 'ladies' and 'gents' notices on the evening of the going down ball?
12. Unlucky for some (Wine and Cheese party)—who removed the light bulb in the ladies' toilets and then put cling film over the seats?
13. Which girl—deliberately, we suppose—left her bra and pants at Buckfast Abbey, after the choir had given a performance there?
14. Which rugby team were stopped by police half-way across Bodmin Moor, and ordered to surrender the souvenirs which they had taken from a Redruth pub?
15. Which player had purloined the hunting horn, and what did he say/do when the policemen asked the culprit to own up?
16. Which student corrected the spelling mistakes in the statement—must have been main English—and then gave it the 'five out of ten and see me at 4 p.m. clause'?
17. Who was the 'all basketball, long jumping, falling leaf, smicon stand' tutor?
18. Which year of creeps performed a 'This is Your Life' production for the head of the P.E. Department?
19. What is the surname of the girl who repeatedly made a midnight reconnaissance in the Baring Court area?
20. Christian name 'Phantom'?
21. Who married cyclops?
22. While fighting in Highton, which naked male students fell into the corridor at Matron's feet?
23. Which pair of students regularly collected ginger hair from the barber's shop and sprinkled it on the pillow of their balding ginger friend who had insomnia because of his hirsute problem?
24. Which group of students hired a mini-bus to complete their expedition across Dartmoor?
25. 1978—which students modelled a 6 ft phallic effigy out of snow, right in front of the Principal's office?
26. And finally—which girl protected it throughout the night from all attackers?

Etc. etc.

The Past...

The task of producing an accurate list of past international players has been a more difficult task than anticipated. The Rev. Dr. F. W. T. Fuller is still trying to complete the list, but the record to date is as follows:

WALES

Gareth Griffiths	1953
Bryn Meredith	1954
Brian Sparks	1954
Glyn John	1954
Ray Williams	1955
Keith Maddocks	1957
Gordon Wells	1957
Don Devereaux	1958
Derek Main	1959
Danny Harris	1959
Brian Price	1961
Graham Hodgson	1962
John Uzzell	1963
Howard Norris	1963
John O'Shea	1967
Ron Jones	1967
Jeff Young	1968
John Bevan	1975
David Burcher	1977
Jeff Squire	1977

ENGLAND

Alan Brown	1938
Don Rutherford	1960
Martin Underwood	1962
Mike Davies	1963
Gerry Redmond	1970
Ian Wright	1971
Peter Knight	1972
Neil Bennett	1973
Derek Wyatt	1975
Mike Slemen	1976
Mike Rafter	1977
John Scott	1978

IRELAND

Sean McDermot	1955
Frank Wilson	1977

CANADA

Dave Docherty	1972
Stu Barber	1972

AUSTRALIA

Peter Horton	1974
--------------	------	------	------

The Future...

There have been great moments of passion in the negotiations centred around the future of the Rugby Club. After the cloud-burst, a mist still hovers and some of the solutions are not readily seen. Alan Hodgson, the ever faithful President and Fixture Secretary, has worked diplomatic wonders to ensure that our fixture list has remained 'nearly' intact. This, of course, was a prime concern for everyone, and so too, was the name of the new club. For a while, the name of St Luke's will be included on the fixture cards, e.g., Exeter University(St Luke's). Most of the decisions have been centred around the financial barriers which university rugby traditionally faces. Not only do they receive a very small grant from the university, but a club subscription of 40p hardly allows for expansion! However, we are all trying, and the initial hostility has now completely faded.

You, of course, can help to put Exeter University Rugby Club on the map. Past P.E. students will be surprised to learn that the P.E. Department can only accept up to thirty students a year. It was ninety per year, five years ago! Even more significant is the fact that there are now more girls at St Luke's than men. We, therefore, have a considerably reduced market, even though this year, over 400 men have applied to take P.E. starting next September! The tragedy lies in the area of academic attainment. No longer can we accept people with three-and-a-half 'O' levels and an international cap! Every applicant must obtain at least two 'A' levels before he can come to college—last year we had to refuse entrance to five schoolboy internationals because they failed their examinations in June. PLEASE, GENTLEMEN, CAN YOU EXERT AN ACADEMIC INFLUENCE ON THESE BOYS? There is no back door route, unless you have teaching experience and are over the age of twenty-five. With the volume of university potential, plus some good traditional St Luke's talent, then there is little doubt that we can maintain our high standards. Already our post-graduate P.E. course which lasts for one year, is providing some of the crucial experience which is needed.

Optimism. Exeter University is already making a good reputation for itself in a variety of sports. They appear to be unbeatable at U.A.U. hockey, and have good U.A.U. records in soccer, volleyball and rugby. We are optimistic that when the clubs from both establishments become organised, then there is every hope that we are capable of winning the U.A.U. Championship in rugby, hockey, basketball, soccer, volleyball and cricket. Surely an ambition to be achieved, BUT only with your help and academic guidance of the new recruit. 'NEVER BEFORE, HAS SO MUCH BEEN WANTED, BY SO FEW, FROM SO MANY!'

We have had the honour of supplying St Luke's College with their Self-Drive Rental requirements

FORREST

Renting.
EXETER 57575

also at Plymouth and Torquay
Cars, Mini-buses, Vans and Trucks from 6 cwt to 32 tons

WOODLEYS WISH ST LUKE'S WELL IN THIS
THEIR ENTERPRISING LAST MATCH AT
TWICKENHAM

Woodleys Shoes

238 High Street, Exeter.

—AND AT EXMOUTH AND BOURNEMOUTH